

Job #: TG1803.01
 Date: 09-04-2018
 Sheet: 1 of 1
 Drawn By: WFW
 Checked By: WFW

Rev. #	Rev. Date

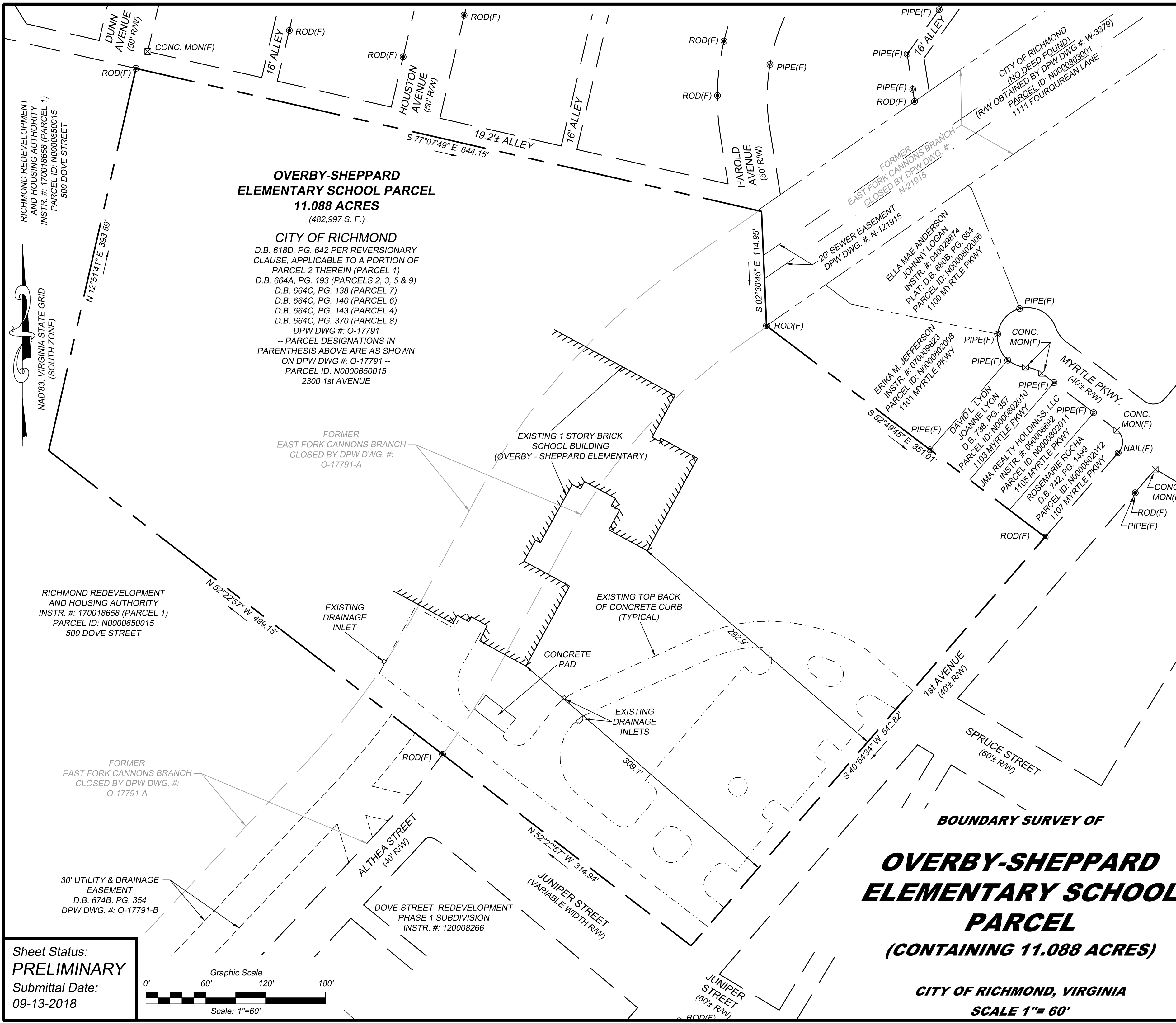
Professional Seal

Sealed: mm-dd-yyyy
 License Expires: 06-30-2020

H&B Surveying and Mapping, LLC
insightful solutions, quality service
 A DBE/WBE SWaM Certified Business

Survey Produced at Richmond Office Location
 2105 Electric Road SW, Suite 103
 Roanoke, VA 23224
 540.904.2559 Office

614 Moorefield Park Drive
 Richmond, VA 23236
 804.330.3781 Office 804.859.5330 Fax



**OVERBY-SHEPPARD
 ELEMENTARY SCHOOL PARCEL
 11.088 ACRES**
 (482,997 S. F.)

CITY OF RICHMOND
 D.B. 618D, PG. 642 PER REVERSIONARY
 CLAUSE, APPLICABLE TO A PORTION OF
 PARCEL 2 THEREIN (PARCEL 1)
 D.B. 664A, PG. 193 (PARCELS 2, 3, 5 & 9)
 D.B. 664C, PG. 138 (PARCEL 7)
 D.B. 664C, PG. 140 (PARCEL 6)
 D.B. 664C, PG. 143 (PARCEL 4)
 D.B. 664C, PG. 370 (PARCEL 8)
 DPW DWG #: O-17791
 -- PARCEL DESIGNATIONS IN
 PARENTHESIS ABOVE ARE AS SHOWN
 ON DPW DWG #: O-17791 --
 PARCEL ID: N0000650015
 2300 1st AVENUE

**BOUNDARY SURVEY OF
 OVERBY-SHEPPARD
 ELEMENTARY SCHOOL
 PARCEL
 (CONTAINING 11.088 ACRES)**

CITY OF RICHMOND, VIRGINIA
SCALE 1"= 60'

Sheet Status:
PRELIMINARY
 Submittal Date:
 09-13-2018

