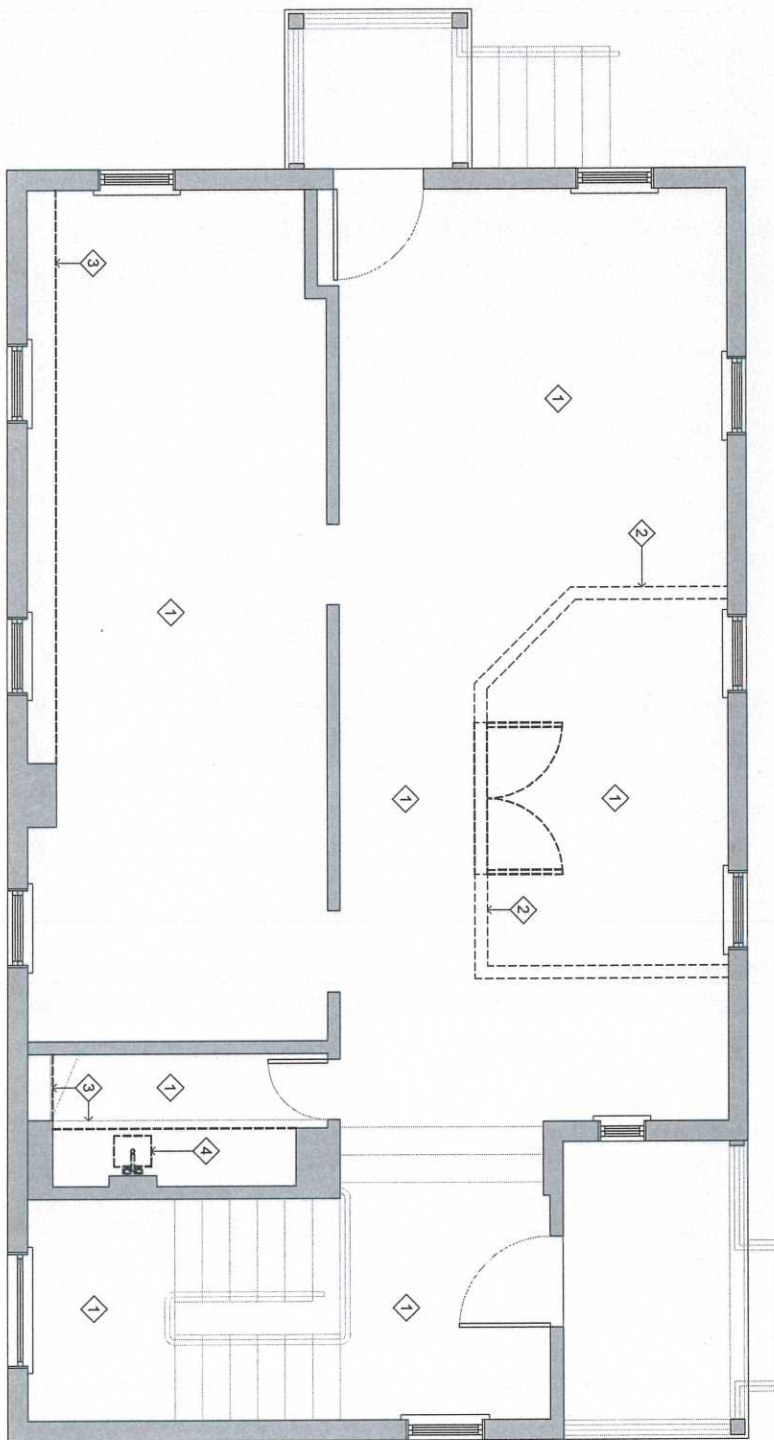


(Current Floor Plan - Main Level)

- DEMOLITION KEY NOTES**
- 1> REMOVE FLOORING, TO BE REPLACED WITH NEW
  - 2> REMOVE WALL & ALL ASSOC. TRIM & DOORS
  - 3> REMOVE CASEWORK & COUNTERTOP
  - 4> REMOVE ALL PLUMBING & HARDWARE
  - 5> REMOVE WALL COVERING



1/0101

DEMO PLAN - MAIN LEVEL

1/4" = 1'-0"

1

D101

DEMO PLAN  
MAIN LEVEL

DESIGN DEVELOPMENT

P&P RICHMOND OFFICE

5612 GROVE AVE  
RICHMOND, VA 23226

06 DEC 2018

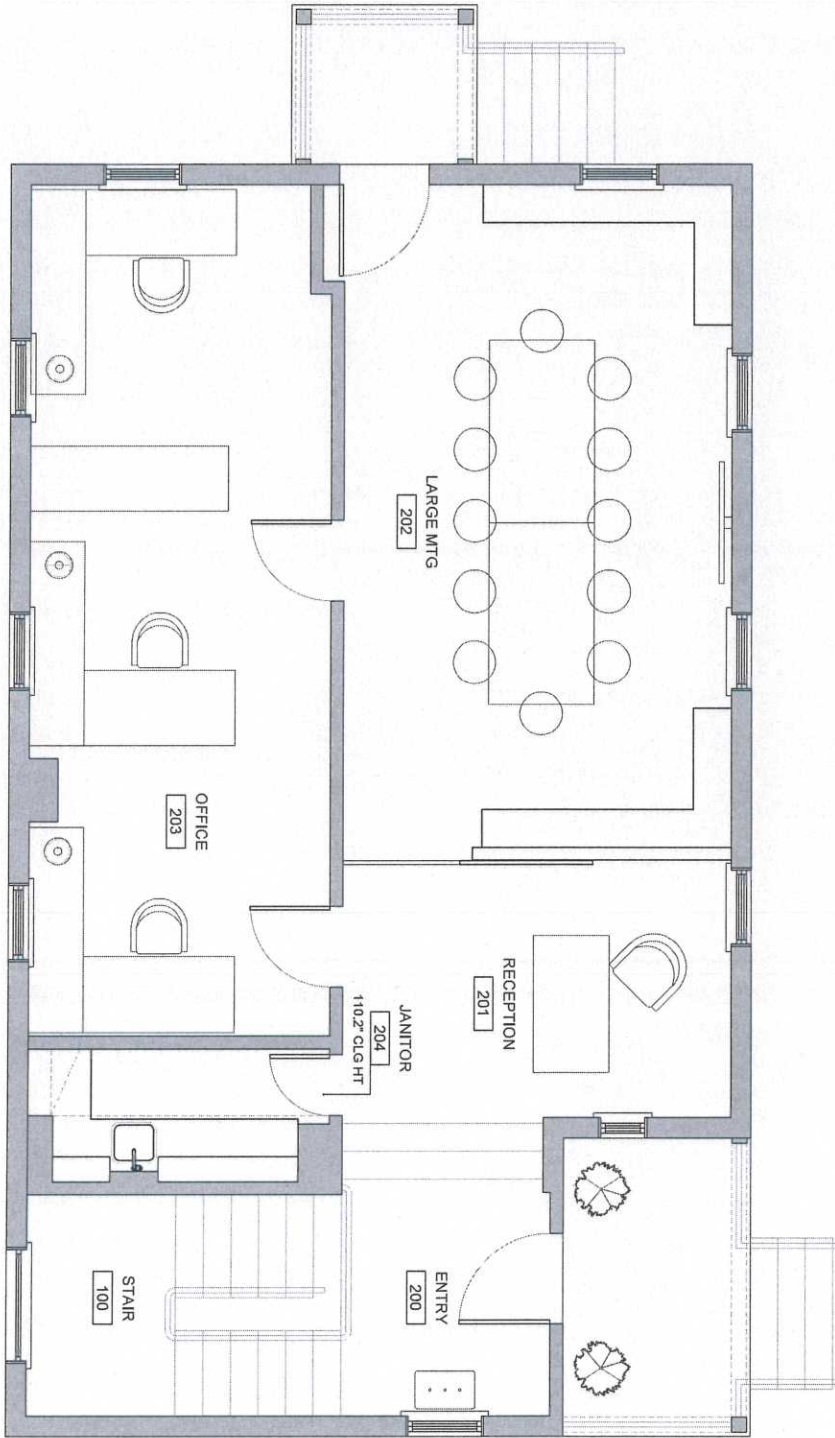
REVISIONS

1.

PILLAR & PEACOCK  
PILLARANDPEACOCK.COM  
5612 GROVE AVE



Proposed floor plan - Main level



FURNITURE PLAN - MAIN LEVEL  
1/4" = 1'-0"  
1

F101

FURNITURE PLAN  
MAIN LEVEL  
DESIGN DEVELOPMENT

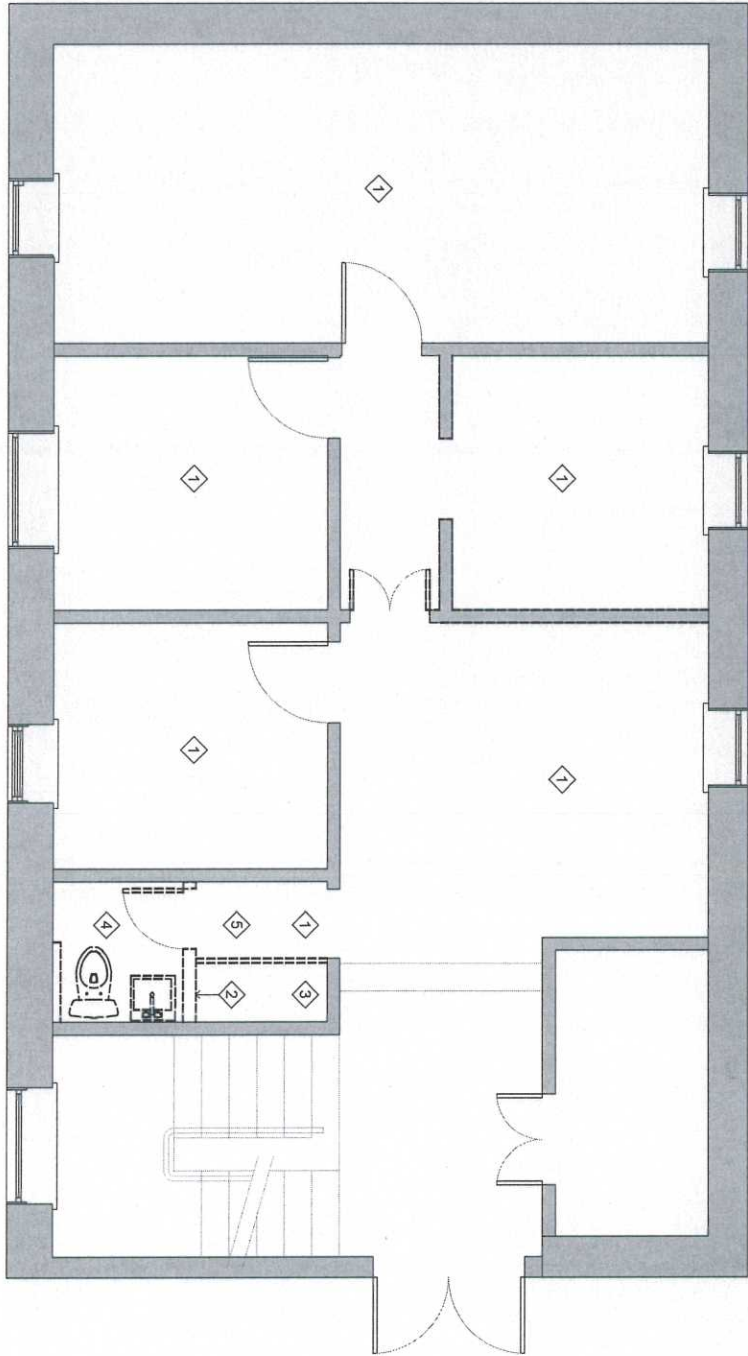
P&P RICHMOND OFFICE  
5612 GROVE AVE  
RICHMOND, VA 23226  
14 DEC 2018

REVISIONS  
1.

PILLAR & PEACOCK  
PILLARANDPEACOCK.COM  
264.963.8202



*(Current floor plan - Lower Level)*



- DEMOLITION KEY NOTES**
- 1 REMOVE FLOORING, TO BE REPLACED WITH NEW
  - 2 REMOVE WALL & ALL ASSOC. TRIM & DOORS
  - 3 REMOVE CASEWORK & COUNTERTOP
  - 4 REMOVE ALL PLUMBING
  - 5 REMOVE WALL COVERING

1/8" = 1'-0"

1/4" = 1'-0"

1

DEMO PLAN - LOWER LEVEL

**D100**

DEMO PLAN  
LOWER LEVEL  
DESIGN DEVELOPMENT

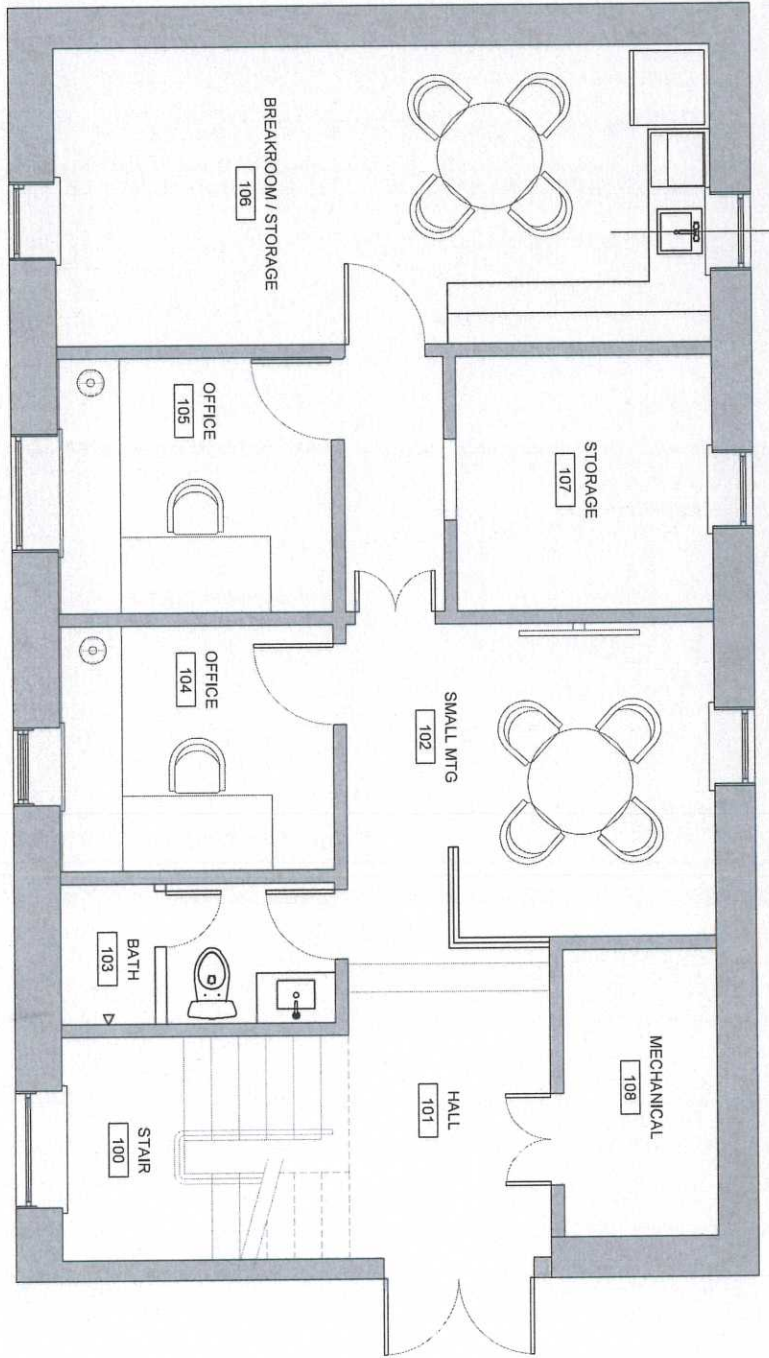
**P&P RICHMOND OFFICE**  
5612 GROVE AVE  
RICHMOND, VA 23226  
06 DEC 2018

REVISIONS  
1.

PILLAR & PEACOCK  
PILLARANDPEACOCK.COM  
256.544.2202



*(Proposed floor plan - Lower level)*



FURNITURE PLAN - LOWER LEVEL  
 1/4" = 1'-0"  
 1

**F100**

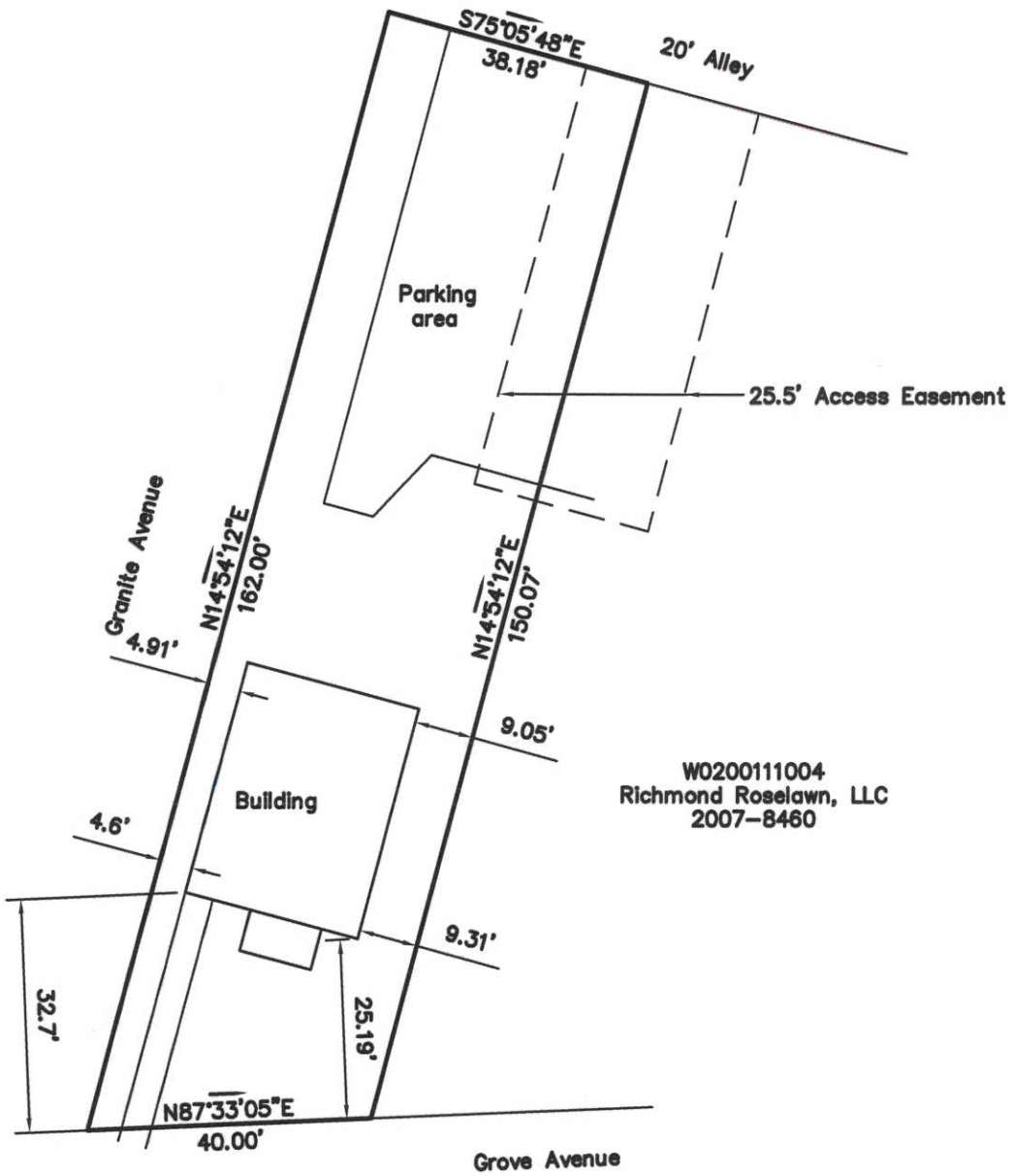
FURNITURE PLAN  
 LOWER LEVEL  
 DESIGN DEVELOPMENT

P&P RICHMOND OFFICE  
 5612 GROVE AVE  
 RICHMOND, VA 23226  
 14 DEC 2018

REVISIONS  
 1.

PILLAR & PEACOCK  
 PILLARANDPEACOCK.COM  
 2024.06.0022



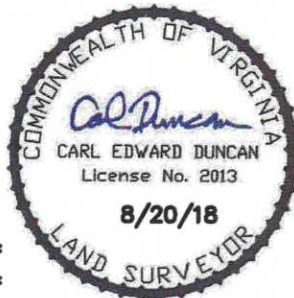


W0200111004  
 Richmond Roselawn, LLC  
 2007-8460

Plat Showing the  
 Physical Improvements to  
 W0200111003  
 5612 Grove Avenue  
 Elaine Oakley Revocable Trust

---

1st District  
 City of Richmond



C. E. Duncan & Associates, Inc.	
2809 Rocky Oak Road	
POWHATAN, VIRGINIA 23139	
(804) 598-8240 Fax (804) 598-9240	
DATE: 8/20/18	SCALE: 1"=20'
DRAWN BY: CED JOB NO.: 18-1584	