

AN ORDINANCE No. 86-239-117

To amend and reordain Section 16-2 of the Code of the City of Richmond, 1985, concerning the creation of old and historic districts and the boundaries of such districts, to include a new district to be known as "Talavera Old and Historic District".

Patron - City Manager (By Request)

Approved as to form and legality
by City Attorney

1. THE CITY OF RICHMOND HEREBY ORDAINS:
2. § 1. That Section 16-2 of the Code of the City of
3. Richmond, 1985, be amended and reordained as follows:

4. Sec. 16-2. Districts created; boundaries of districts.
5. In order to execute the purposes and objectives
6. declared in section 16-1 of this code and pursuant to the
7. powers granted to and conferred upon the city in section
8. 15.1-503.2 of the Code of Virginia and section 17.10 of the
9. Charter, there is hereby created in the city and it is
10. hereby divided into certain districts to be known as "Old
11. and Historic Districts", which are hereinafter referred to
12. as such in this chapter, and which shall be in addition to
13. the districts into which the city is divided by chapter 32
14. of this code. The boundaries of such districts are as
15. follows:

1. St. John's Church Old and Historic District

2. The St. John's Church Old and Historic District
3. shall consist of the area beginning at the point of inter-
4. section of the east line of Twenty-Second Street with the
5. north line of East Franklin Street, thence extending along
6. the north line of East Franklin Street to the east line of
7. Twenty-First Street, thence extending along the east line of
8. Twenty-First Street to the south line of an eighteen foot
9. east-west alley between Broad Street and Marshall Street;
10. thence extending along the south line of said alley to the
11. east line of a fifteen foot north-south alley between
12. Twenty-First Street and Twenty-Second Street, thence ex-
13. tending along the east line of said alley to the south line
14. of a fifteen foot alley between Broad Street and Marshall
15. Street, thence extending along the south line of said alley
16. to the west line of Twenty-Second Street, thence extending
17. across Twenty-Second Street to the north line of the alley
18. between Broad Street and Marshall Street, thence extending
19. along the north line of the alley to the west line of
20. Twenty-Third Street, thence extending along the west line of
21. Twenty-Third Street to the south line of Marshall Street,
22. thence extending along the south line of Marshall Street to
23. the west line of Twenty-Fifth Street, thence extending along
24. the west line of Twenty-Fifth Street to a point midway

1. between Broad Street and Marshall Street, thence extending
2. along a line parallel with Broad Street to the west line of
3. Thirty-Second Street at the intersection with the south line
4. of the alley between Marshall Street and Broad Street,
5. thence southerly along the west line of Thirty-Second Street
6. to the north line of Grace Street, thence in a southeasterly
7. direction along the west edge of the roadway in Chimborazo
8. Park a distance of 400 feet, more or less, thence in a
9. southwesterly direction a distance of 700 feet, more or
10. less, to the intersection of the south line of Libby Terrace
11. and the west line of Thirty-First Street, thence along
12. Thirty-First Street in a southerly direction to the north
13. line of Williamsburg Avenue, thence in a westerly direction
14. along the north line of Williamsburg Avenue to an inter-
15. section with Main Street, thence in a northwesterly
16. direction along Main Street to a point approximately 140
17. feet east of Twenty-Seventh Street, thence northwardly along
18. a line parallel to Twenty-Seventh Street to a point midway
19. between Franklin Street and Main Street, thence extending
20. along a line parallel with the south line of Franklin Street
21. to the east line of Twenty-Second Street, thence extending
22. along the east line of Twenty-Second Street to the point of
23. beginning.

- 1.
- 2.
- 3.
- 4.
- 5.
- 6.
- 7.
- 8.
- 9.
- 10.
- 11.
- 12.
- 13.
- 14.
- 15.
- 16.
- 17.
- 18.
- 19.
- 20.
- 21.
- 22.
- 23.
- 24.
- 25.

Old Stone House Old and Historic District

(1916 E. Main Street)

Fronting on the north line of East Main Street beginning at a point 64 feet west of 20th Street and extending westwardly therefrom 32 feet and running back in a northwardly direction a distance of 155 feet to an alley.

Craig House Old and Historic District

(1812 East Grace Street)

Located at the northwest corner of 19th Street and East Grace Street fronting 122 feet on Grace Street and running in a northwardly direction along the west line of 19th Street a distance of 155 feet to a property line.

White House of the Confederacy Old and Historic District

(1200 East Clay Street)

Located at the southeast corner of East Clay Street and North 12th Street fronting 130 feet on East Clay Street and running back in a southwardly direction 132.33 feet.

Valentine Museum and Wickham-Valentine House

Old and Historic District

(1005-1015 East Clay Street)

Fronting on the south line of East Clay Street between North 10th Street and North 11th Street running back in a southwardly direction a distance of 172.44 feet along 11th Street to an alley at 11th Street its extension westwardly to North 10th Street.

1. John Marshall House Old and Historic District

2. (818 East Marshall Street)

3. Located at the northwest corner of East Marshall
4. Street and 9th Street fronting 130 feet on East Marshall
5. Street and running back in a northwardly direction a
6. distance of 161 feet, more or less, to a property line.

7. Norman Steward House Old and Historic District

8. (707 E. Franklin Street)

9. Fronting on the south line of East Franklin Street
10. beginning at a point 79.08 feet east of North 7th Street and
11. extending eastwardly 52.5 feet and running back in a south-
12. wardly direction a distance of 153.02 feet to an alley.

13. The Barrett House Old and Historic District

14. (15 South 5th Street)

15. Located at the northeast corner of East Cary Street
16. and South 5th Street fronting 82.5 feet on South 5th Street
17. and running back along the north line of East Cary Street a
18. distance of 130.0 feet to an alley.

19. Linden Row Old and Historic District

20. (100-114 East Franklin Street)

21. Fronting on the north line of East Franklin Street
22. between 1st Street and a property line 210.32 feet east of
23. North 1st Street and running back in a northwardly direction
24. 153 feet, more or less, to an alley.

1. Crozet House Old and Historic District

2. (100-102 East Main Street)

3. Located at the northeast corner of East Main Street
4. and North 1st Street fronting 59 feet on East Main Street
5. running back in a northwardly direction a distance of 151.50
6. feet to an alley.

7. Glasgow House Old and Historic District

8. (1 West Main Street)

9. Located at the southwest corner of West Main Street
10. and South Foushee Street fronting 80 feet on West Main
11. Street and running back in a southwardly direction 155.5
12. feet to an alley.

13. Virginia House Old and Historic District

14. (4301 Sulgrave Road)

15. Fronting 215 feet on the south line of Sulgrave Road
16. between Arthur's Seat (Wakefield Road extended) on the east
17. and a property line on the west, running back in a south-
18. wardly direction to a property line 181 feet along Arthur's
19. Seat and 221 feet along the western property line.

20. Monument Avenue Old and Historic District

21. The Monument Avenue Old and Historic District shall
22. consist of the area bounded as follows: on the west by the
23. west line of the Boulevard; on the north by the north line
24. of a series of alleys north of and parallel to Monument

1. Avenue and Franklin Street (south of Grace Street); on the
2. east by the east line of Birch Street and a property line
3. extending northwardly from Franklin Street and situated
4. approximately 230 feet west of Ryland Street; and on the
5. south by the south line of a series of alleys south of and
6. parallel to Monument Avenue and Franklin Street and by a
7. line 150 feet south of and parallel to Monument Avenue and
8. Franklin Street where no such alley exists (North of Park
9. Avenue and West Avenue).

10. Kent-Valentine House Old and Historic District

11. (12 E. Franklin Street)

12. The Kent-Valentine House Old and Historic District
13. shall consist of the area bounded as follows: fronting
14. 130.50 feet on the north line of East Franklin Street
15. between First Street on the east and a property line on the
16. west and running back 156.50 feet to an alley.

17. Belgian Building Old and Historic District

18. (Lombardy Street and Brook Road)

19. Located at the northwest corner of Lombardy Street
20. and Brook Road, beginning at the intersection of the two
21. streets; thence running southwestwardly along Lombardy
22. Street 550 feet to a point; thence running back approx-
23. imately 400 feet northwestwardly to a point; thence 750 feet
24. northeastwardly (parallel to Lombardy Street) to the south

1. line of Graham Road, eastwardly along the south line of
2. Graham Road to its intersection with Brook Road; thence down
3. the west line of Brook Road to the beginning point at the
4. intersection of Brook Road and Lombardy Street.

5. Bolling Haxall House Old and Historic District

6. (211 East Franklin Street)

7. Fronting on the south line of East Franklin Street
8. beginning at a point 52.5 feet west of North 3rd Street and
9. extending westwardly therefrom 76.75 feet and running back
10. in a southwardly direction 207.67 feet to an alley on the
11. western property line and an equal distance along an
12. irregular eastern property line.

13. Centenary United Methodist Church Old and Historic District

14. (409 East Grace Street)

15. Fronting on the south line of East Grace Street
16. beginning at a point 52.21 feet west of the western line of
17. North 5th Street and running back 121.5 feet in a southward-
18. ly direction to an alley; thence 78 feet westwardly along
19. said alley to a corner; thence 40.58 feet in a southwardly
20. direction along an alley to the rear property line; thence
21. 44.67 feet westwardly to the western property line; thence
22. 162.08 feet in a northwardly direction along the western
23. property line to its intersection with the south line of
24. East Grace Street; thence 121.67 feet in an eastwardly

1. direction along the south line of East Grace Street to the
2. beginning point.

3. Henry Coalter Cabell House Old and Historic District

4. (116 South Third Street)

5. Located at the northwest corner of South Third and
6. East Canal Street and fronting 107.33 feet on the west line
7. of South Third Street and running back in a westwardly
8. direction a distance of 133.5 feet to an alley.

9. Hancock-Wirt-Caskie House Old and Historic District

10. (2 North Fifth Street)

11. Located at the northwest corner of North 5th Street
12. and East Main Street and fronting 83.33 feet on the west
13. line of North 5th Street and running back approximately 60.9
14. feet in a westwardly direction to a property line.

15. Leigh Street Baptist Church Old and Historic District

16. (Leigh and 25th Streets)

17. Located at the southeast corner of 25th and Leigh
18. Streets fronting on the east line of North 25th Street for
19. 196 feet and running back in an eastwardly direction 125
20. feet to an alley.

21. Mayo Memorial House Old and Historic District

22. (110 West Franklin Street)

23. Located on the northeast corner of West Franklin and
24. North Jefferson Streets, fronting on the north line of West

1. Franklin Street for 100.5 feet and running back in a
2. northwardly direction 194.35 feet to an alley.

3. St. Paul's Episcopal Church Old and Historic District

4. (815 East Grace Street)

5. Located on the southwest corner of East Grace and
6. North 9th Streets, fronting 67.5 feet on the south line of
7. East Grace Street and running back in a southwardly
8. direction 146.77 feet to an alley.

9. St. Peter's Catholic Church Old and Historic District

10. (800 East Grace Street)

11. Located on the northeast corner of East Grace and
12. North 8th Streets, fronting 65 feet on the north line of
13. East Grace Street and running back in a northwardly
14. direction 163.17 feet to an alley.

15. Second Presbyterian Church Old and Historic District

16. (9 North Fifth Street)

17. Fronting on the east line of North Fifth Street
18. beginning at a point 54.29 feet north of East Main Street
19. and extending northwardly therefrom 108.83 feet and running
20. back in an eastwardly direction 130.96 feet to an alley.

21. Shockoe Valley Old and Historic District

22. The Shockoe Valley Old and Historic District shall
23. consist of the area beginning at the point of intersection
24. of the east line of 18th Street with the south line of Broad

1. Street; thence extending in an easterly direction along the
2. south line of Broad Street to the east line of 19th Street;
3. thence in a northerly direction with the east line of 19th
4. Street to the south line of Marshall Street; thence, in an
5. easterly direction with the south line of Marshall Street to
6. the east line of 21st Street; thence in a southerly
7. direction with the east line of 21st Street to the north
8. line of Franklin Street; thence in a westerly direction
9. along the north line of Franklin Street to the east line of
10. 18th Street; thence in a northerly direction along the east
11. line of 18th Street to the point of beginning.

12. The 200 Block West Franklin Street

13. Old and Historic District

14. The 200 Block West Franklin Street Old and Historic
15. District shall comprise the area bounded as follows: on the
16. west by the west line of north Madison Street; on the
17. north by the north line of the alley north of and parallel
18. to Franklin Street (south of Grace Street); on the east by
19. the east line of North Jefferson Street; and on the south by
20. the south line of the alley south of and parallel to
21. Franklin Street (north of Main Street).

22. Woodward House-Rockets Old and Historic District

23. Beginning at the intersection of the north line of
24. East Main Street with the south line of Williamsburg Avenue

1. and continuing in an easterly direction along the south line
2. of Williamsburg Avenue a distance of 798.20 feet, more or
3. less, to a point; thence in a southerly direction along a
4. property line a distance of 35.83 feet to a point; thence in
5. a westerly direction along the property line of the Southern
6. Railway a distance of 645.04 feet an offset; thence along
7. said offset in a northerly direction along the property line
8. a distance of 49.30 feet to a point; thence in a westerly
9. direction along the same property line a distance of 148.00
10. feet to the north line of East Main Street; thence along the
11. north line of East Main Street in a northwesterly direction
12. a distance of 106.48 feet to the point of beginning.

13. St. Andrew's Episcopal Church

14. Old and Historic District

15. Fronting 82.00 feet on the west line of Laurel
16. Street between Idlewood Avenue on the south and a property
17. line on the north and running back 139.00 feet to an alley.

18. Stonewall Jackson School Old and Historic District

19. (North Lombardy Street)

20. Beginning at the intersection of the north line of
21. West Main Street and the east right of way line of Lombardy
22. Street; thence in a northerly direction along the east right
23. of way line of Lombardy Street a distance of 179.75 feet,
24. more or less, to a point in the south right of way line of

1. an alley that extends in an east-west direction from the
2. east right of way line of Lombardy Street to the west right
3. of way line of Plum Street; thence in an easterly direction
4. 170.67 feet, more or less, to a point in the property line
5. separating the Stonewall Jackson School property from the
6. property immediately east thereof; thence in a southerly
7. direction along said property line a distance of 179.75
8. feet, more or less, to a point on the north line of West
9. Main Street; thence in a westerly direction along the north
10. line of West Main Street a distance of 170.67 feet, more or
11. less, to the beginning point.

12. Shockoe Slip Old and Historic District

13. The Shockoe Slip Old and Historic District shall
14. comprise the area bounded as follows: Beginning at the
15. intersection of the north right-of-way line of the Richmond
16. Metropolitan Authority Expressway and the east line of 12th
17. Street; thence extending in a northerly direction along the
18. east line of 12th Street to the intersection of the east
19. line of 12th Street and the south line of East Main Street;
20. thence extending in an easterly direction along the south
21. line of East Main Street to the intersection of the south
22. line of East Main Street and the west line of South 15th
23. Street; thence extending 106.42 feet in a southerly
24. direction along the west line of South 15th Street to a

1. point; thence in an easterly direction to a point at the
2. intersection of the east line of South 15th Street and the
3. south line of an east-west 14.21 foot alley (known as Greek
4. Alley), located in the 1500 block between East Main Steet
5. and East Cary Street; thence extending 187 feet, more or
6. less, in an easterly direction along the south line of said
7. alley to a point at the intersection of the south line of
8. said alley and the west line of a north-south overhead
9. railway trestle; thence extending 600 feet, more or less, in
10. a southerly direction along the west line of said overhead
11. railway trestle to a point at the intersection of the west
12. line of said overhead railway trestle and the north line of
13. Dock Street; thence extending in a westerly direction along
14. the north line of Dock Street to a point at the intersection
15. of the north line of Dock Street (extended) and the west
16. line of South 14th Street; thence extending 300 feet in a
17. southerly direction along the west line of South 14th Street
18. to a point; thence extending in a westerly direction to the
19. west right-of-way line of Virginia Street; thence extending
20. in a northerly direction along the west right-of-way line of
21. Virginia Street to a point at the intersection of the west
22. right-of-way line of Virginia Street and the south building
23. line of 140 Virginia Street; thence extending in a westerly
24. direction along the south building line of 140 Virginia

1. Street to a point at the intersection of the south building
2. line (extended) of 140 Virginia Street and the east property
3. line of Reynolds Metals North Plant; thence extending in a
4. northerly direction to a point at the intersection of the
5. east property line (extended) of Reynolds Metals North Plant
6. and the north right-of-way line of the Richmond Metropolitan
7. Authority Downtown Expressway; thence in a westerly
8. direction along the north right-of-way line of the Richmond
9. Metropolitan Authority Downtown Expressway to the point of
10. beginning.

11. Ebenezer Baptist Church Old and Historic District

12. (214-216 W. Leigh Street)

13. Fronting on the north right-of-way line of West
14. Leigh Street beginning at the east right-of-way line of
15. Judah Street; thence with the north right-of-way line of
16. West Leigh Street easterly 90 feet to the intersection of
17. the eastern property line of parcel N000-0184-032 (number
18. assigned by the Assessor of the City of Richmond for tax
19. purposes); thence with the property line northerly 124 feet
20. to the south right-of-way line of an alley that extends from
21. the east right-of-way line of Judah Street; thence with the
22. south right-of-way line of the alley, westerly 90 feet to
23. the east right-of-way line of Judah Street; thence with the
24. east right-of-way line of Judah Street southerly 124 feet to
25. the starting point.

1. William W. Morien House Old and Historic District

2. (2226 W. Main Street)

3. Fronting on the north right-of-way line of West Main
4. Street beginning at a point 54.5 feet east of the east right
5. of-way line of Strawberry Street; thence with the north
6. right-of-way line of West Main Street easterly 50 feet to
7. the intersection of the eastern property line of parcel
8. W000-0996-031 (number assigned by the Assessor of the City
9. of Richmond for tax purposes); thence with the property line
10. northerly 125 feet to the south right-of-way line of an
11. alley that extends from the east right-of-way line of
12. Strawberry Street to the west right-of-way line of Shields
13. Avenue; thence with the south right-of-way line of said
14. alley westerly 50 feet to the intersection of the western
15. property line of parcel W000-0996-031; thence with the
16. property line southerly 125 feet to the starting point.

17. Wilton Old and Historic District

18. (215 S. Wilton Road)

19. Located at the south end of South Wilton Road,
20. starting at a point 30.00 feet east of the intersection of
21. the west line of South Wilton Road and the northern property
22. line extended of parcel W022-0127-001 (number assigned by
23. the Assessor of the City of Richmond for tax purposes);
24. thence with the property line easterly 230.00 feet to the

1. eastern property line; thence with the property line
2. southerly 458.00 feet to the southern property line; thence
3. with the property line westerly along the north line of the
4. James River and Kanawha Canal to the western property line;
5. thence with the property line northerly 428.50 feet to the
6. starting point.

7. Jefferson Hotel Old and Historic District

8. (114 W. Main Street)

9. Block W000-0125 (number assigned by the Assessor of
10. the City of Richmond for tax purposes), beginning at the
11. point of intersection of the north right of way line of West
12. Main Street and the east right of way line of Jefferson
13. Street; thence northerly with the east right of way line of
14. Jefferson Street to the south right of way line of Franklin
15. Street; thence easterly with the south right of way line of
16. Franklin Street to the west right of way line of Adams
17. Street; thence southerly with the west right of way line of
18. Adams Street to the north right of way line of West Main
19. Street; thence westerly with the north right of way line of
20. West Main Street to the beginning point.

21. Broad Street Old and Historic District

22. The Broad Street Old and Historic District shall
23. consist of the area bounded as follows:

24. Beginning at the intersection of the west right of
25. way line of North 1st Street and the south right of way line

1. of Broad Street; thence with the west right of way line of
2. North 1st Street southerly to the south right of way line of
3. an alley that extends westerly from the west right of way
4. line of North 1st Street between Broad Street and Grace
5. Streets; thence with the south right of way line of said
6. alley westerly to the east right of way line of Henry
7. Street; thence with the east right of way line of Henry
8. Street northerly to the north right of way line of an alley
9. that extends easterly from Henry Street between Marshall
10. Street and Broad Street; thence with the north right of way
11. line of said alley easterly to the west right of way line of
12. 1st Street; thence with the west right of way line of North
13. 1st Street southerly to the point of beginning at the
14. intersection of said west right of way line of North 1st
15. Street and the south right of way line of Broad Street.

16. Pace House Old and Historic District

17. (100 West Franklin Street)

18. Fronting on the north right of way line of West
19. Franklin Street and beginning at the intersection of said
20. north right of way line of West Franklin Street and the west
21. right of way line of North Adams Street; thence with the
22. property line of parcel W000-0126-011 (number assigned by
23. the Assessor of the City of Richmond for tax purposes), that
24. is, the north right of way line of said West Franklin

1. Street, westerly 60.5 feet to the west property line of the
2. parcel herein described; thence with said west property line
3. northerly and parallel to Adams Street, 184.14 feet to the
4. north property line; thence with the said north property
5. line easterly 60.5 feet to the east property line, that is,
6. the west right of way line of Adams Street; thence with the
7. property line, the west right of way line of Adams Street,
8. southerly 184.14 feet to the point of beginning, at the
9. north right of way line of West Franklin Street.

10. Talavera Old and Historic District

11. (2315 West Grace Street)

12. Fronting on the south right of way line of West Grace
13. Street beginning at a point 203.0 feet west of the west
14. right of way line of Strawberry Street; thence with the
15. north property line of parcel W000 1087-016 (number assigned
16. by the Assessor of the City of Richmond for tax purposes)
17. westerly 59.0 feet to the west property line; thence with
18. the property line southerly 145.0 feet to the south property
19. line; thence with the property line easterly 59.0 feet to
20. the east property line; thence with the property line
21. northerly 145.0 feet to the starting point.

22. § 2. This ordinance shall be in force and effect
23. upon adoption.

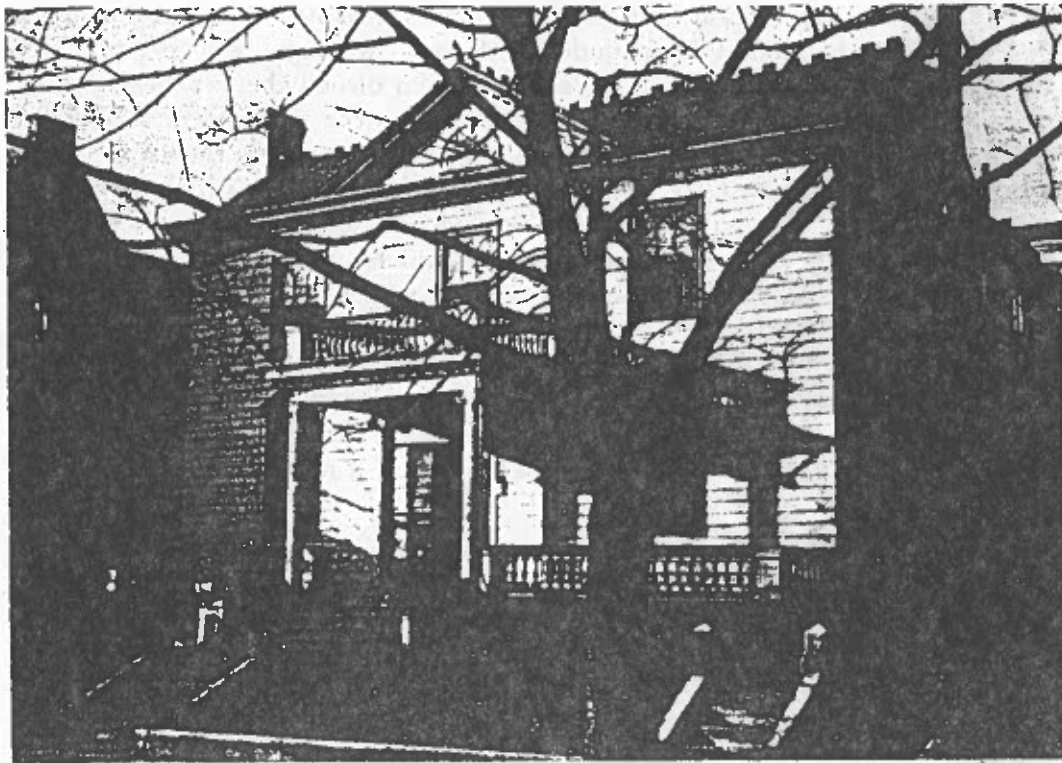
24.

"Talavera"

2315 West Grace Street

"TALAVERA" HAS THE peculiar interest of being the only house still standing in Richmond where Edgar Allan Poe is known to have been a visitor. The house was built in 1838 by Thomas Talley on a tract of land that had formerly belonged to "The Hermitage", country home of John Mayo. The land between the Richmond Turnpike (Broad Street) and a continuation of Franklin Street, from what is now Meadow Street to the present Boulevard, was sold off by the Mayos in 1816, and in 1838 Talley began to buy up these lots until he had accumulated twenty-five acres. On this farm he built the house, called "Talavera" from his family name.

Thomas Talley's daughter, Susan Archer, who later became the wife of Louis Weiss, knew Poe during his last visits to Richmond. She reports that in the late summer of 1849 her family saw a good deal of him, while he was spending pleasant evenings at her home or at nearby "Duncan Lodge". Poe came to see her one drizzly morning in September and discussed with her in detail the composition of "The Raven".



Scott

"TALAVERA"

Built 1838

August 15, 1986

TO: Property Owners in the vicinity of 2315 W. Grace St.,
- Talavera.

On August 27, 1986 the Commission of Architectural Review will consider designation of the structure noted above as a City recognized Old and Historic District. The enclosed map locates the property in question.

By this letter, the Commission is notifying property owners in the area of the opportunity to discuss the proposed designation and its implications at this meeting.

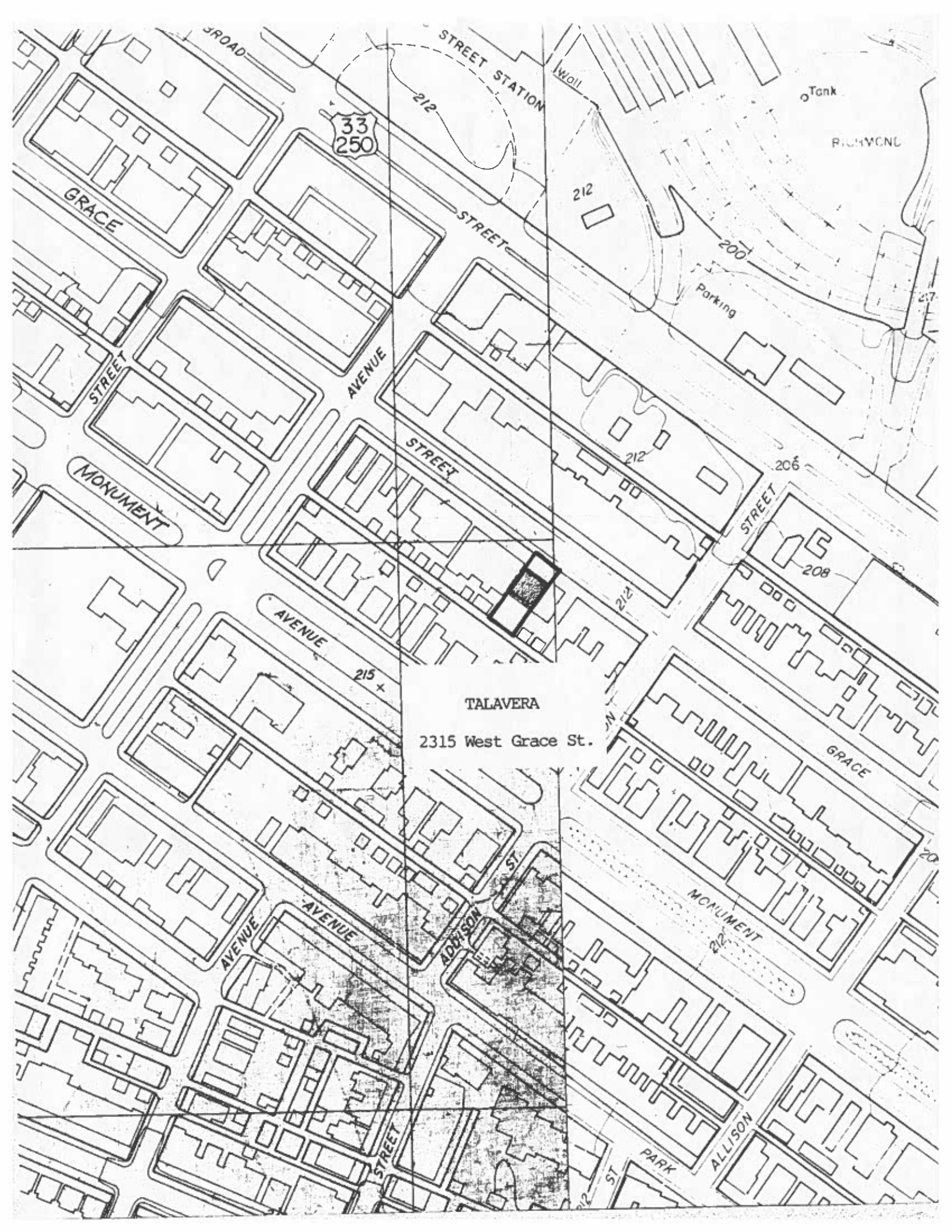
The meeting will be held at 2:00 P.M. in the Fifth Floor Conference Room of City Hall. If you have any questions, please contact the Commission Secretary, Mr. John G. Albers (780-4532).

Sincerely yours,


J. Terry Cox
Chairman

enc.

JTC:ja



33
250

STREET STATION

Tank

RICHMOND

GRACE

212

Parking

STREET

AVENUE

STREET

212

206

MONUMENT

STREET

208

AVENUE

215 +

TALAVERA

2315 West Grace St.

GRACE

AVENUE

AVENUE

ADISON ST

MONUMENT

PARK

ALLISON