

RECEIVED

JAN 29 2014

LAND USE ADMINISTRATION

GLAVÉ &  
HOLMES  
ARCHITECTURE

2101 East Main Street  
Richmond, Virginia 23223  
T 804.649.9301 F 804.343.1378  
W www.glavendholmes.com

PROJECT TITLE  
VIRGINIA HISTORICAL  
SOCIETY - STORY OF  
VIRGINIA CAMPAIGN  
RENOVATIONS

VIRGINIA HISTORICAL SOCIETY  
4211 BOULVARD  
RICHMOND, VIRGINIA 23221

CONSULTANTS

STRUCTURAL ENGINEER  
STRONG, PENKE & ASSOCIATES, LTD.  
4196 COOK ROAD, SUITE 110  
RICHMOND, VIRGINIA 23226  
T 804.346-3930

ME/P/ASP ENGINEER  
ENGINEERS PLUS  
2900 HUNGERFORD RD., SUITE 200  
RICHMOND, VIRGINIA 23226  
T 804.501-0843

LANDSCAPE ARCHITECT  
HIGGINS & GIBSTMAN  
5301 COOPER AVENUE  
RICHMOND, VIRGINIA 23226  
T 804.740-7500

CIVIL ENGINEER  
DRAKER ADEN ASSOCIATES  
8090 WILSON DRIVE  
RICHMOND, VIRGINIA 23228  
T 804.264-2220 F 804.264-8773

SCALE

PROJECT NUMBER  
21032

DATE  
OCTOBER 25, 2013

DRAWN BY: CHECKED BY:

REVISIONS  
NO. DATE DESCRIPTION

SHEET TITLE

COVER SHEET

SHEET NUMBER

C1.0

SPECIAL USE PERMIT SUBMISSION  
VIRGINIA HISTORICAL SOCIETY  
STORY OF VIRGINIA CAMPAIGN

SUP SHEET LIST

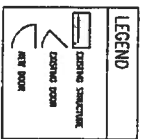
PAGE NO.	PAGE TITLE
C10	COVER SHEET
C11	TERMINATING SURVEY
C12	SITE PLAN
A1.1	EXTERIOR ELEVATIONS PART A
A1.2	EXTERIOR ELEVATIONS PART B
A1.3	GROUND FLOOR PLAN - LEARNERS CENTER
A1.4	GROUND FLOOR PLAN - INTRANCE HALL
A1.5	FIRST FLOOR PLAN - ENTRANCE HALL
A1.6	OVERALL SITE PLAN
L10	AS-NO IMPROVE GROUND PLAN
L11	AS-NO IMPROVE GROUND PLAN
L12	LEARNERS CENTER RELAY AND CHANGE PLANS
L13	SOUTH WING RELAY PLAN
L14	SOUTH WING RELAY PLAN
L15	FROM ENTRANCE & LEARNERS CENTER PLANNING PLANS
L16	SCULPTURE PLANNING PLANS

BUILDING AREA

	3.833	SQ. FT.
BASMENT FLOOR PLAN	70,961	SQ. FT.
GROUND FLOOR PLAN	57,958	SQ. FT.
FIRST FLOOR PLAN	30,439	SQ. FT.
SECOND FLOOR PLAN	53,628	SQ. FT.
THIRD FLOOR PLAN	6,875	SQ. FT.
MECHANICAL FLOOR PLAN		
TOTAL	223,894	SQ. FT.

BUILDING HEIGHT

4 STORY - 48'-6" (AT EXISTING SOUTH WING 2003 ADDITION)  
MECH. PENTHOUSE - 6'-9" (AT EXISTING SOUTH WING 2003 ADDITION)



**GENERAL FLOOR PLAN NOTES:**  
 1. ALL DIMENSIONS TO FACE UNLESS OTHERWISE NOTED.  
 2. REFER TO SPECIFICATIONS FOR MATERIALS AND FINISHES.  
 3. REFER TO SPECIFICATIONS FOR MECHANICAL AND ELECTRICAL.

**GLAVÉ & HOLMES ARCHITECTURE**

2101 East Main Street  
 Richmond, Virginia 23221  
 T 804-679-9303 F 804-341-3172  
 W www.glavesholmes.com

**PROJECT TITLE**  
 VIRGINIA HISTORICAL SOCIETY - STORY OF VIRGINIA CAMPANION RENOVATIONS

**PART A - SITE AND BUILDING MODIFICATIONS**

VIRGINIA HISTORICAL SOCIETY  
 625 N. BOSTLEVAARD  
 RICHMOND, VIRGINIA 23221

**CONSULTANTS**  
 STRUCTURAL ENGINEER  
 STENOZ, PENCE & ASSOCIATES, LTR.  
 4119 COW ROAD, SUITE 110  
 RICHMOND, VIRGINIA 23206  
 T 804-348-7970 F 804-348-1171

**MEDIA/FAST ENGINEER**  
 ENGINEERS PLUS  
 800 HANCOCK ROAD, SUITE 200  
 RICHMOND, VIRGINIA 23220  
 T 804-361-0445 F 804-501-0846

**LANDSCAPE ARCHITECT**  
 HUNTER & GIBBS/SHAW  
 1000 W. MAIN STREET, SUITE 100  
 RICHMOND, VIRGINIA 23220  
 T 804-780-7360

**PART A**  
 100%  
 Construction Document  
 QC-SET

**PROJECT NUMBER**  
 21032

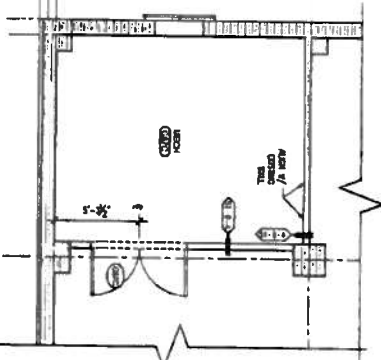
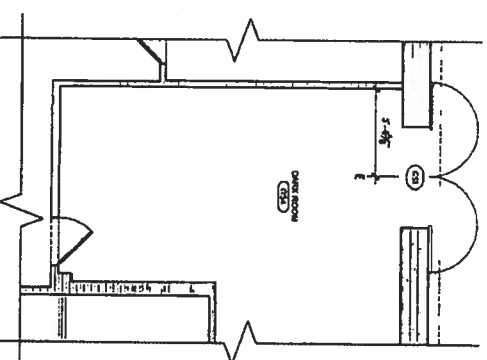
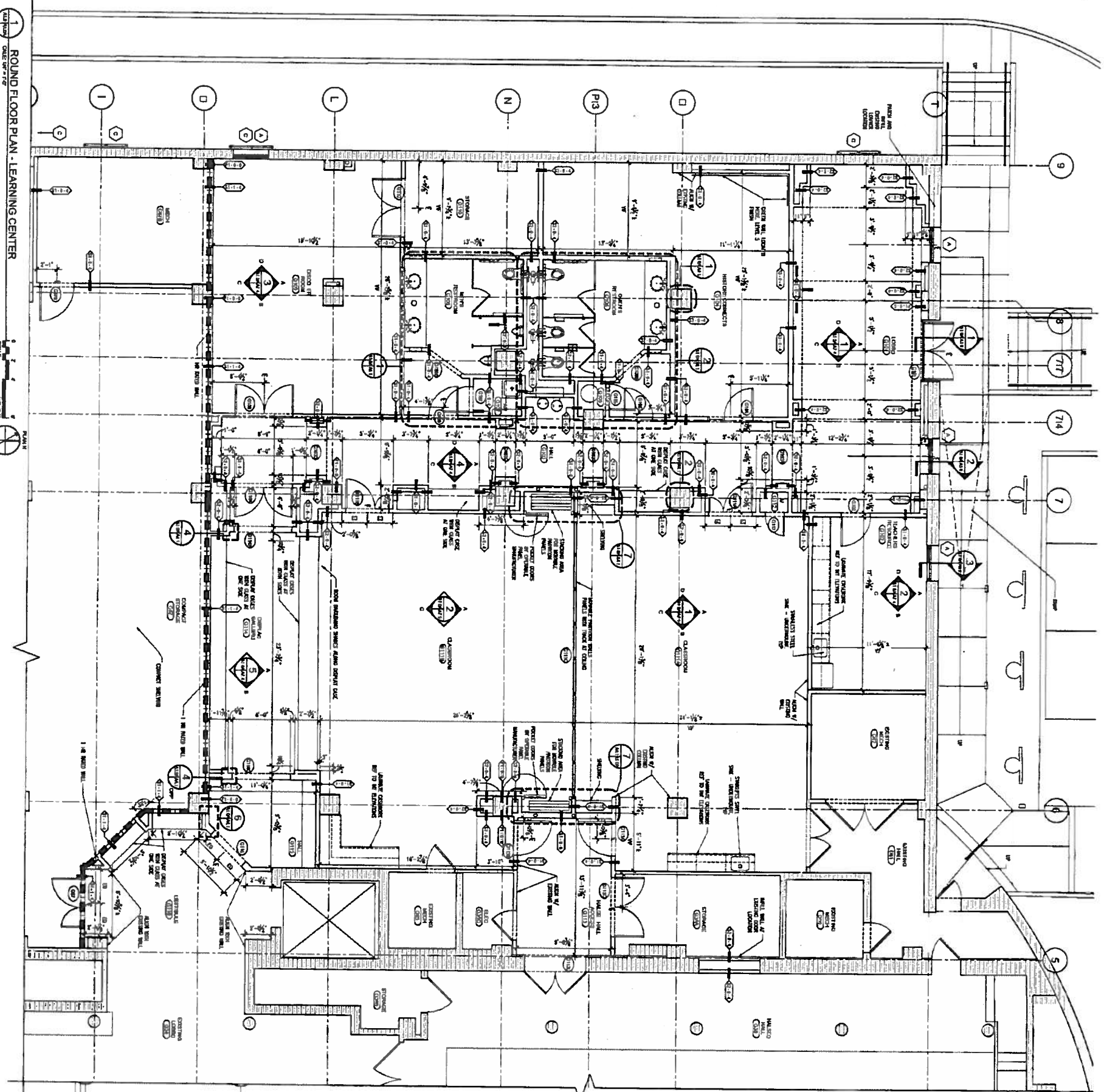
**DATE**  
 October 25, 2013

**DRAWN BY:** JEM  
**CHECKED BY:** SP

**NO. DATE DESCRIPTION**

**SHEET NUMBER**  
 GROUND FLOOR PLAN - LEARNING CENTER

**A1.0A**



**1 GROUND FLOOR PLAN - LEARNING CENTER**  
 SCALE: 1/8" = 1'-0"

**2 GROUND FLOOR PLAN - MECH**  
 SCALE: 1/8" = 1'-0"

**3 GROUND FLOOR PLAN - DARK ROOM**  
 SCALE: 1/8" = 1'-0"

**GLAVÉ & HOLMES ARCHITECTURE**

7401 East Main Street  
 Richmond, Virginia 23123  
 T 804 649 7303 F 804 343 2378  
 W www.glaveandholmes.com

PROJECT TITLE  
**VIRGINIA HISTORICAL SOCIETY - STORY OF VIRGINIA CAMPAIGN RENOVATIONS**

PART B - SOUTH PLAZA AND SOUTH ENTRANCE CONSTRUCTION

CONTRACT PARTS  
 STRUCTURAL ENGINEER  
 STRECO PRICE & ASSOCIATES, LTD.  
 1000 W. MAIN ST., SUITE 200  
 GLEN ALLEN, VIRGINIA 23060  
 T 804-244-3725 F 804-344-1171

MECHANICAL ENGINEER  
 ENGINEERS PLUS  
 2000 HANCOCK RD., SUITE 300  
 RICHMOND, VIRGINIA 23228  
 T 804-271-0843 F 804-561-0844

LANDSCAPE ARCHITECT  
 HICKS & GUSTENBACHER  
 3911 Grove Avenue  
 Richmond, Virginia 23224  
 T 804 782 1500

**PART B 100% Construction Document**

PROJECT NUMBER  
 21032

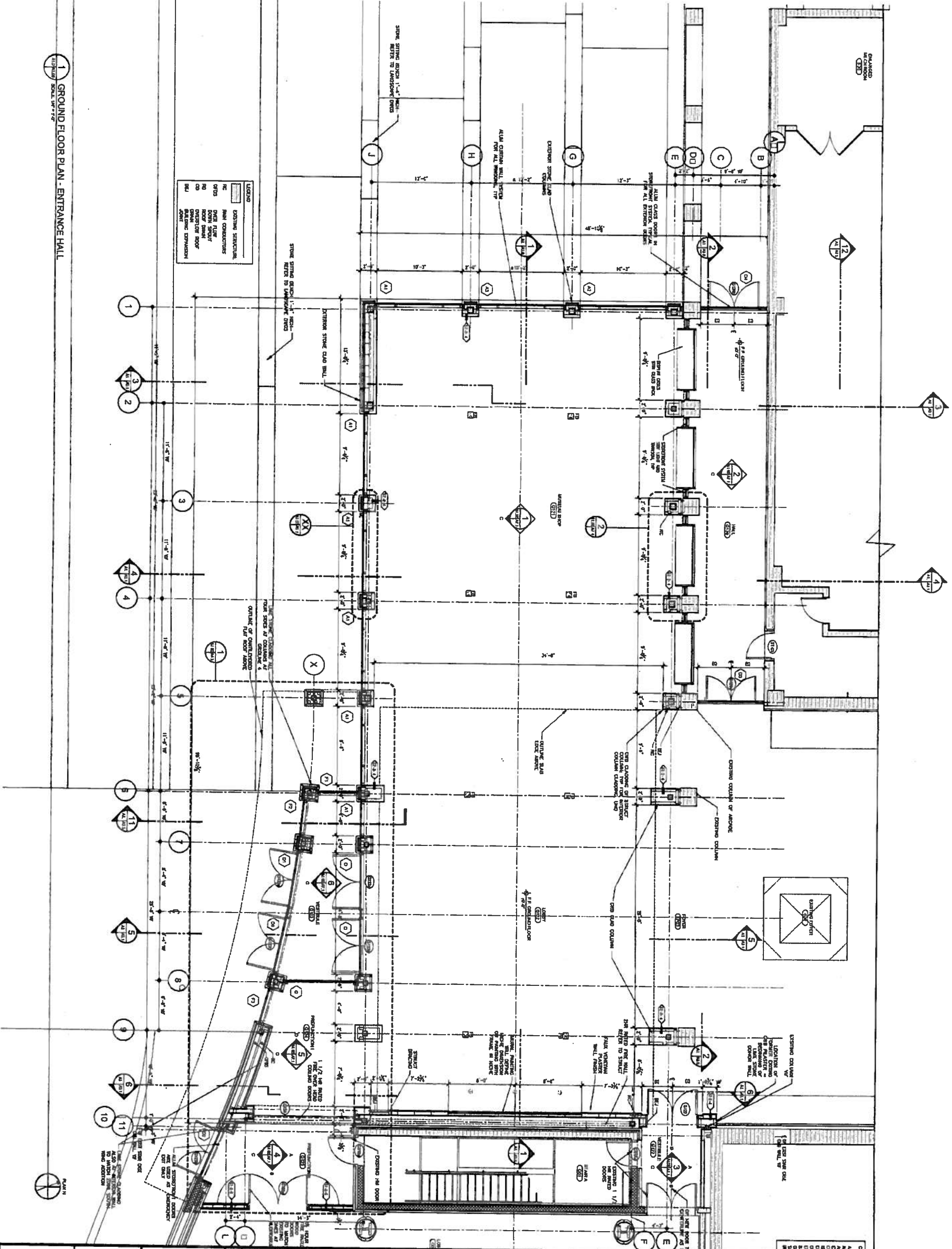
DATE  
 October 25, 2013

REVISIONS  
 NO. DATE DESCRIPTION

SHEET TITLE  
**GROUND FLOOR PLAN - ENTRANCE HALL**

SHEET NUMBER  
**A1.0B**

Scale: 1/8" = 1'-0"



**1 GROUND FLOOR PLAN - ENTRANCE HALL**



**GLAVÉ & HOLMES**  
ARCHITECTURE

2301 East Main Street  
Richmond, Virginia 23223  
T 804 649 9300 F 804 343 1316  
W www.glaveandholmes.com

PROJECT TITLE  
VIRGINIA HISTORICAL SOCIETY - STORY OF VIRGINIA CAMPAIGN RENOVATIONS  
PART B - SOUTH PLAZA AND SOUTH ENTRANCE CONSTRUCTION  
VIRGINIA HISTORICAL SOCIETY  
RICHMOND, VIRGINIA 23221

CONSULTANTS  
STRUCTURAL ENGINEER  
STUBBS, PERRY & ASSOCIATES, LTD.  
CLAY ALLEN, VIRGINIA 23060  
T 804-346-7323 F 804-346-1171  
MECHANICAL ENGINEER  
MERRIFIELD ENGINEERS  
7900 HUNTERS LANE, SUITE 200  
RICHMOND, VIRGINIA 23228  
T 804-501-0465 F 804-501-0244  
LANDSCAPE ARCHITECT  
HEDGECOCK & CRENSHAW  
5701 Grove Avenue  
RICHMOND, VIRGINIA 23223  
T 804-783-1200 F ..

SEAL  
**PART B**  
100%  
Construction Document  
QC-SET

PROJECT NUMBER  
21032  
DATE  
October 25, 2013  
DRAWN BY: LAF CHECKED BY: JSF  
REVISIONS  
NO. DATE DESCRIPTION

SHEET TITLE  
FIRST FLOOR  
PLAN -  
ENTRANCE HALL

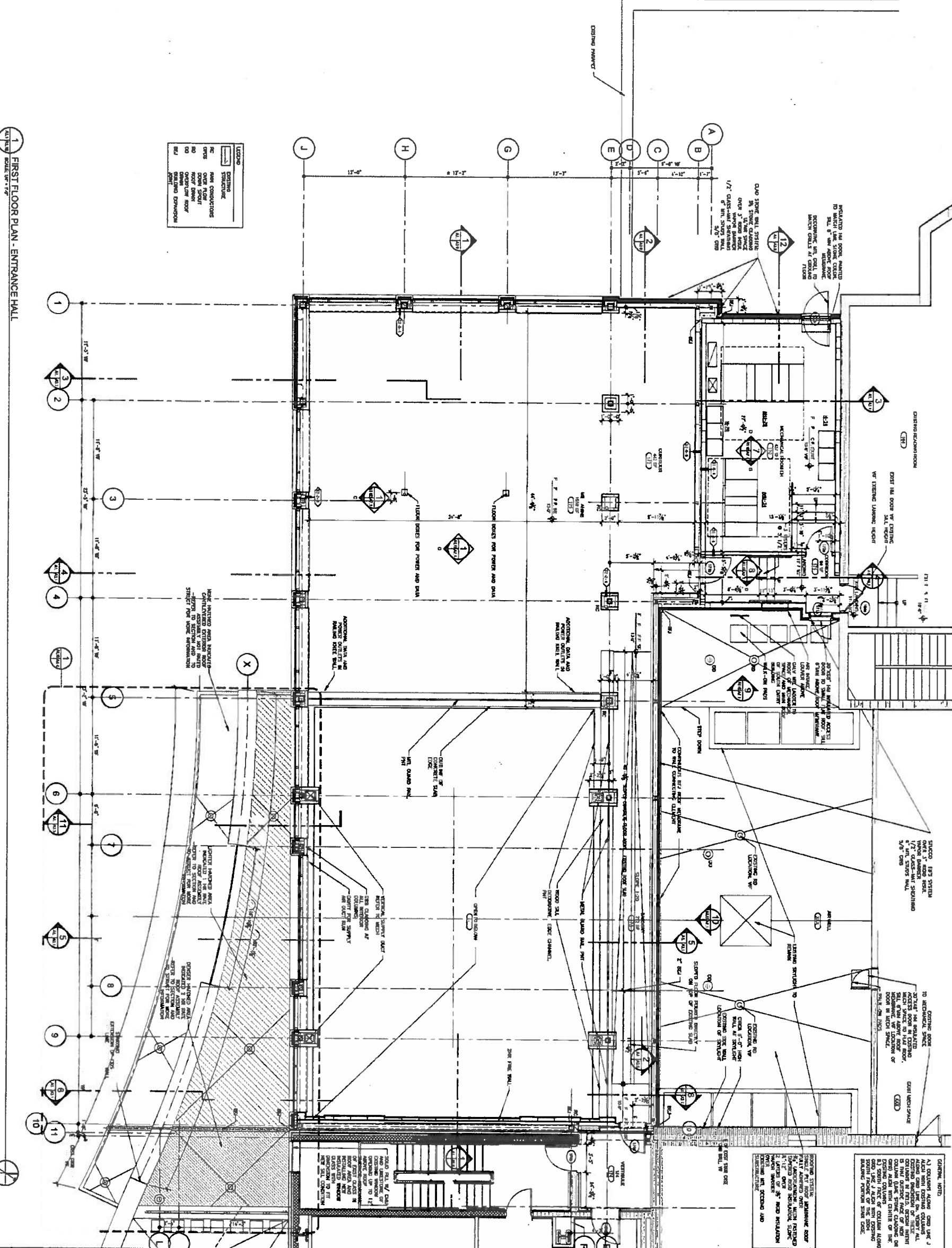
SHEET NUMBER  
**A1.1B**

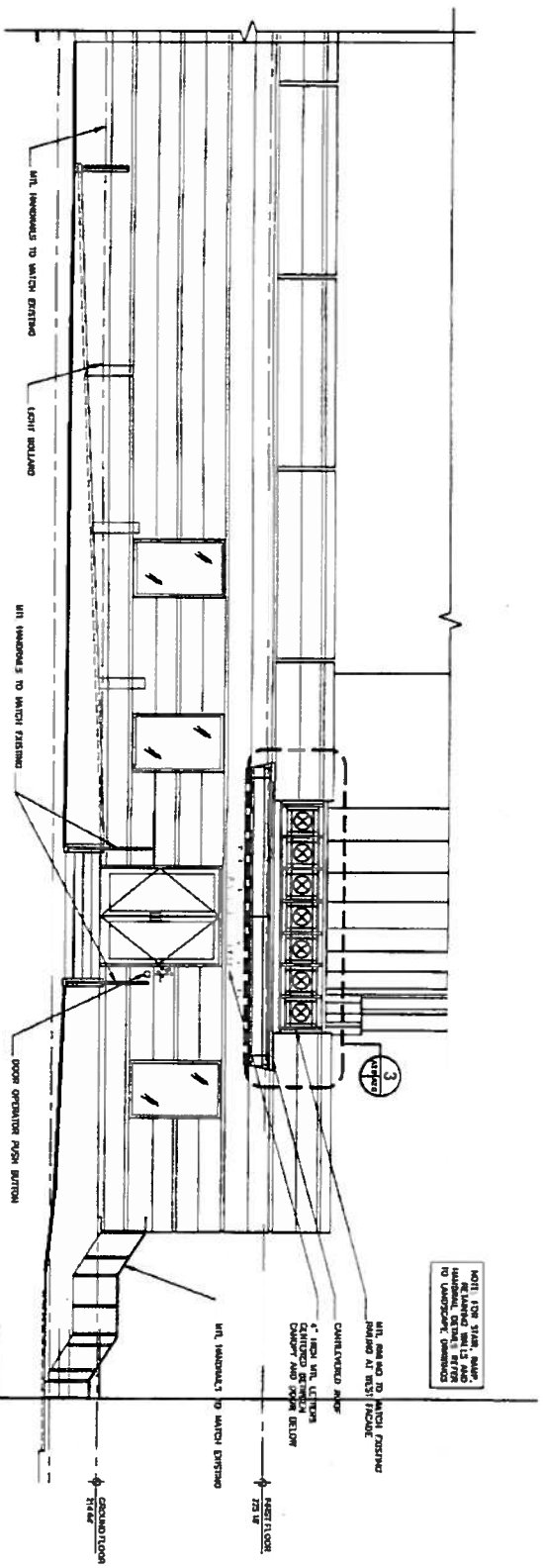
GENERAL NOTES  
A) CONSULTOR SHALL VERIFY ALL EXISTING CONDITIONS AND RECORD THEM AS SHOWN ON THE DRAWINGS. ALL DIMENSIONS SHALL BE TAKEN FROM THE CENTERLINE OF THE WALLS UNLESS OTHERWISE NOTED.  
B) ALL DIMENSIONS SHALL BE TAKEN FROM THE CENTERLINE OF THE WALLS UNLESS OTHERWISE NOTED.  
C) ALL DIMENSIONS SHALL BE TAKEN FROM THE CENTERLINE OF THE WALLS UNLESS OTHERWISE NOTED.  
D) ALL DIMENSIONS SHALL BE TAKEN FROM THE CENTERLINE OF THE WALLS UNLESS OTHERWISE NOTED.

NOTING SYSTEM  
VIRGINIA HISTORICAL SOCIETY - STORY OF VIRGINIA CAMPAIGN RENOVATIONS  
PART B - SOUTH PLAZA AND SOUTH ENTRANCE CONSTRUCTION  
VIRGINIA HISTORICAL SOCIETY  
RICHMOND, VIRGINIA 23221

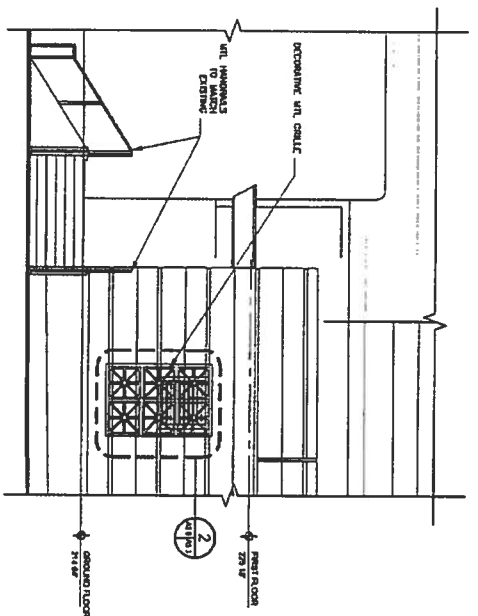
SYMBOL	DESCRIPTION
---	NEW CONSTRUCTION
- - -	EXISTING STRUCTURE
---	NEW FLOOR
---	NEW ROOF
---	NEW WALL
---	NEW WINDOW
---	NEW DOOR
---	NEW FINISH
---	NEW MECHANICAL
---	NEW ELECTRICAL
---	NEW PLUMBING
---	NEW PAINT

1 FIRST FLOOR PLAN - ENTRANCE HALL  
SCALE: 1/8" = 1'-0"

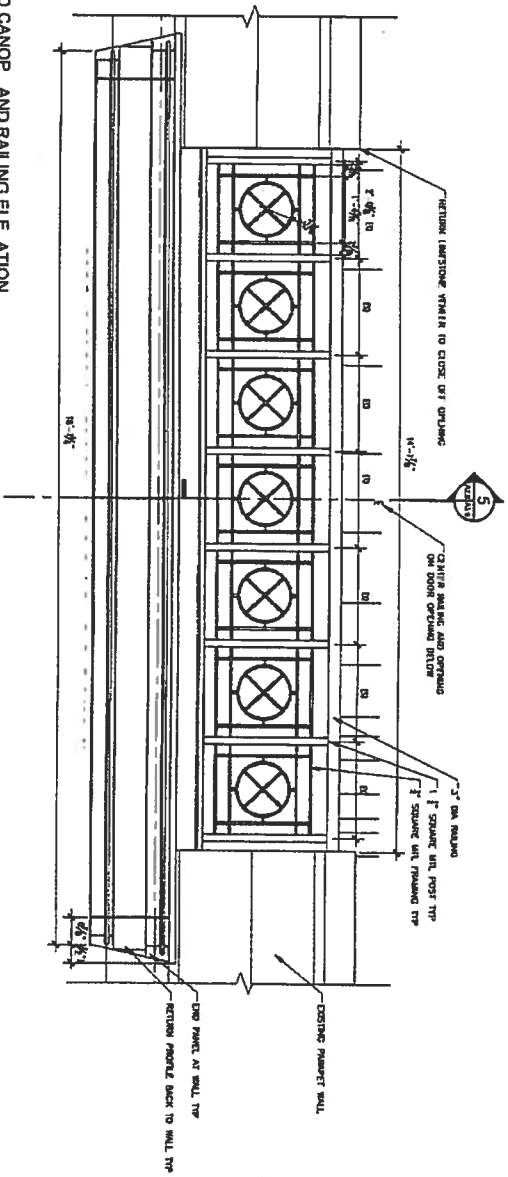




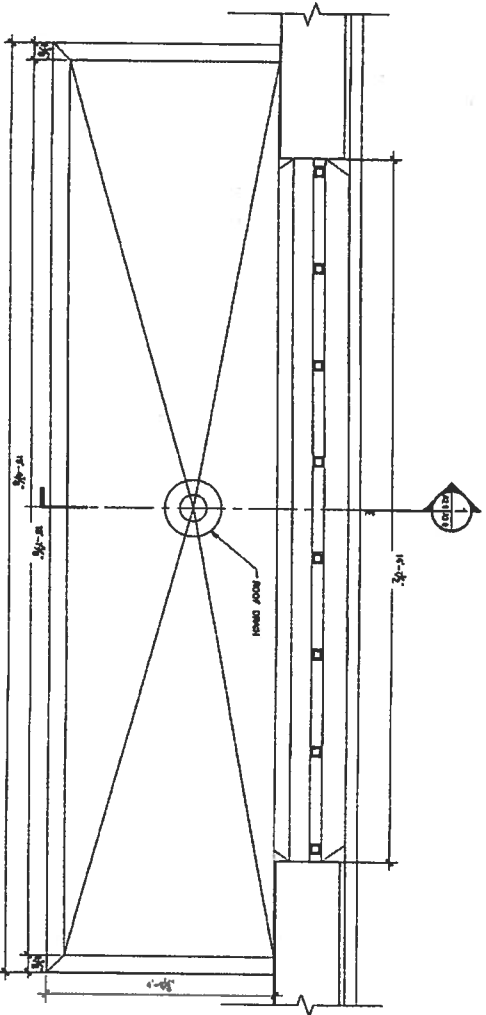
1 ENLARGED NORTH ELEVATION  
SCALE 1/8" = 1'-0"



2 PARTIAL EAST ELEVATION  
SCALE 1/8" = 1'-0"



3 ENLARGED CANOPY AND RAILING ELEVATION  
SCALE 1/8" = 1'-0"



4 CANOPY ROOF PLAN  
SCALE 1/8" = 1'-0"

NOTE: FOR STAIR, RAMP, BALCONY AND OTHER DETAILS, REFER TO LANTIERNE DRAWINGS TO UNDERSTAND DIMENSIONS

**GLAVÉ & HOLMES ARCHITECTURE**

2301 East Main Street  
Richmond, Virginia 23221  
T: 804.499.9303 F: 804.343.1378  
W: www.glaveandholmes.com

**PROJECT TITLE**  
VIRGINIA HISTORICAL SOCIETY - STORY OF VIRGINIA CAMPAIGN RENOVATIONS  
**PART A - SITE AND BUILDING MODIFICATIONS**  
VIRGINIA HISTORICAL SOCIETY  
428 N. BOLLING ROAD  
RICHMOND, VIRGINIA 23221

**CONSULTANTS**  
**STRUCTURAL ENGINEER**  
STRONG, PENCE & ASSOCIATES, LTD.  
4196 CREEK ROAD, SUITE 110  
GLAZIER BLVD., VIRGINIA 23060  
T: 804.746.7523 F: 804.746.1174

**MECHANICAL ENGINEER**  
MEPPEN & ASSOCIATES  
7901 WALKER RD., SUITE 200  
RICHMOND, VIRGINIA 23226  
T: 804.597.0945 F: 804.597.0946

**LANDSCAPE ARCHITECT**  
MCGOUGH & GOSTENBERG  
1000 W. BROAD ST., SUITE 200  
RICHMOND, VIRGINIA 23224  
T: 804.746.7500 F: ...

**PART A**  
**100% Construction Document**  
**QC-SET**

**PROJECT NUMBER**  
21032

**DATE**  
October 25, 2013

**DRAWN BY:** JDM  
**CHECKED BY:** SSP

**NO. DATE DESCRIPTION**

**SHEET NUMBER**  
**A2.0**

**EXTERIOR ELEVATIONS**

**GLAVE & HOLMES ARCHITECTURE**

1101 East Main Street  
Richmond, Virginia 23211  
T 804 644-1103 F 804 343-3178  
W www.glaveandholmes.com

**PROJECT TITLE**  
VIRGINIA HISTORICAL SOCIETY - STORY OF VIRGINIA CAMPAIGN RENOVATIONS

**PART B - SOUTH FLAZA AND SOUTH ENTRANCE CONSTRUCTION**  
VIRGINIA HISTORICAL SOCIETY  
415 N. SOUTHWING  
RICHMOND, VIRGINIA 23211

**CONSULTANTS**  
STRUCTURAL ENGINEER  
STRONG, PRICE & ASSOCIATES, PLLC  
4150 COW ROAD, SUITE 110  
GLENEATH, VIRGINIA 23060  
T 804-746-2125 F 804-746-1171

**MEP/EASP ENGINEER**  
ENGINEERS PLUS  
2050 HANCOCK RD., SUITE 200  
RICHMOND, VIRGINIA 23223  
T 804-351-0900 F 804-451-0444

**LANDSCAPE ARCHITECT**  
LANDSCAPE ARCHITECT  
3011 Green Avenue  
Richmond, Virginia 23211  
T 804-742-2500

**PART B**  
100%  
Construction Document

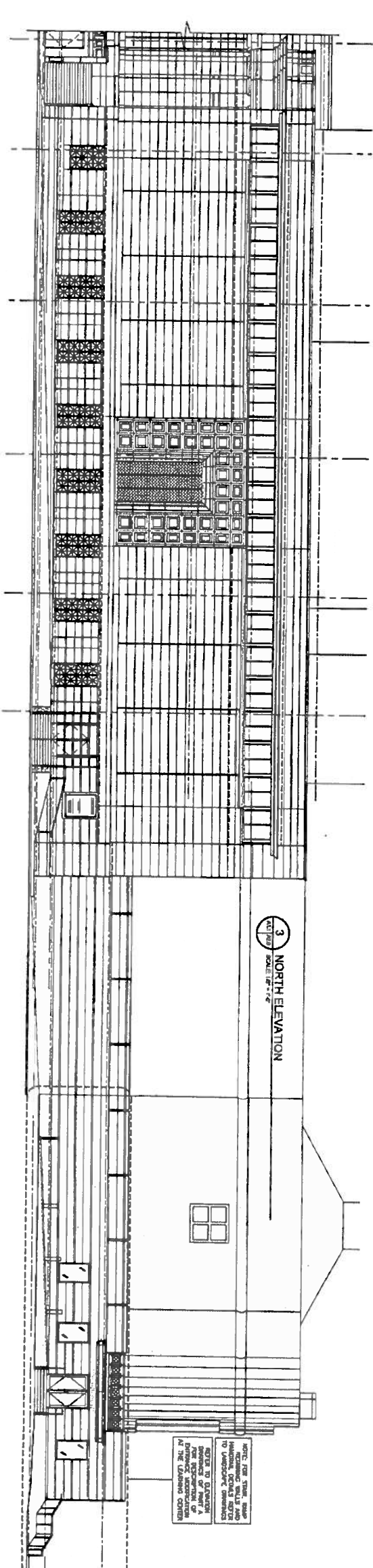
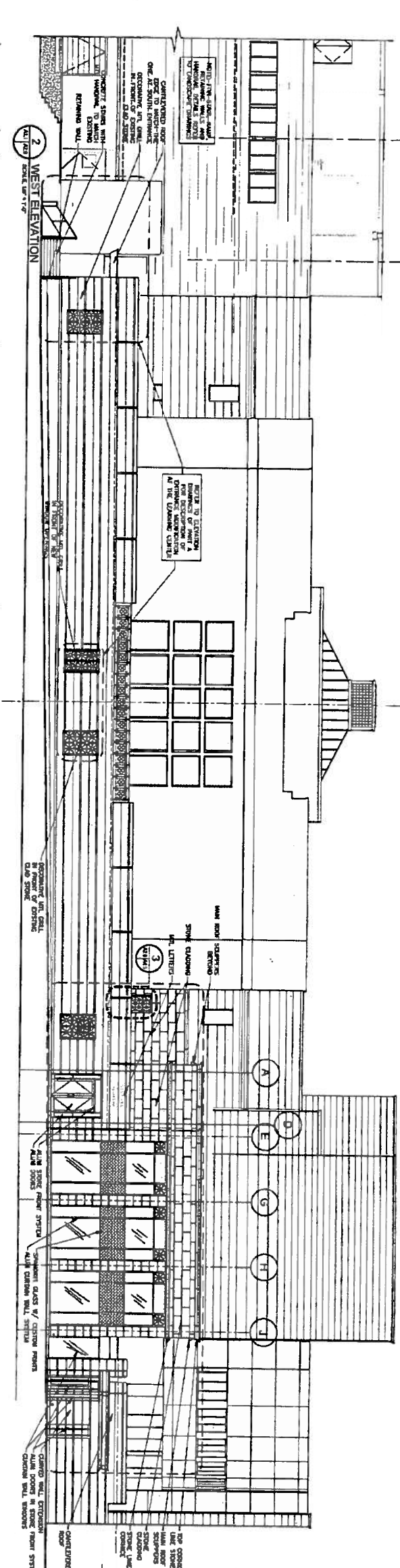
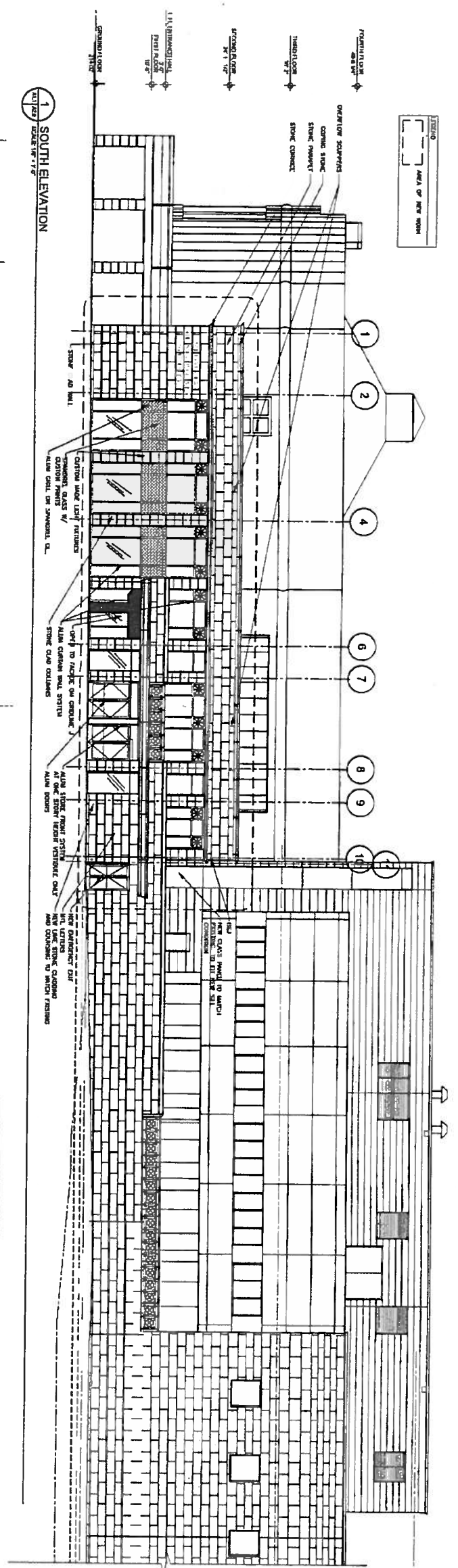
**PROJECT NUMBER**  
21032

**DATE**  
October 25, 2013

**DRAWN BY:** LAP  
**CHECKED BY:** SP

**REVISIONS**  
NO. DATE DESCRIPTION

**SHEET NUMBER**  
A2.0



**SHEET TITLE**  
EXTERIOR ELEVATIONS

**GLAVÉ & HOLMES ARCHITECTURE**

200 East Main Street  
Richmond, Virginia 23223  
T 804 648 5303 F 804 343 1378  
www.glavendholmes.com

**PROJECT TITLE**  
VIRGINIA HISTORICAL SOCIETY STORY OF VIRGINIA CAMPAIGN RENOVATIONS  
**PART B - SOUTH ENTRANCE CONSTRUCTION AND SITE MODIFICATIONS**  
VIRGINIA HISTORICAL SOCIETY  
428 N. ROUTE 40  
RICHMOND, VIRGINIA 23221

**CONSULTANTS**

**STRUCTURAL ENGINEER**  
STRUBB, FORCE & ASSOCIATES, LTD.  
GLENN ALLEN, VIRGINIA 23060  
T 804-346-9135 F 804-346-1171

**MEP/FA/SP ENGINEER**  
ENGINEERS PLUS  
1100 N. GLENN ROAD, SUITE 200  
RICHMOND, VIRGINIA 23222  
T 804-301-0845 F 804-301-0846

**LANDSCAPE ARCHITECT**  
SCOTT & GERTSMANER  
5700 RICHMOND AVENUE, SUITE 2226  
RICHMOND, VIRGINIA 23226  
T 804-748-7500 F

**CIVIL ENGINEER**  
DWAYNE ADEBI ASSOCIATES  
1100 N. GLENN ROAD, SUITE 200  
RICHMOND, VA 23222  
T 804-284-2220 F 804-284-8773



**PROJECT NUMBER**  
21032

**DATE**  
November 15, 2013

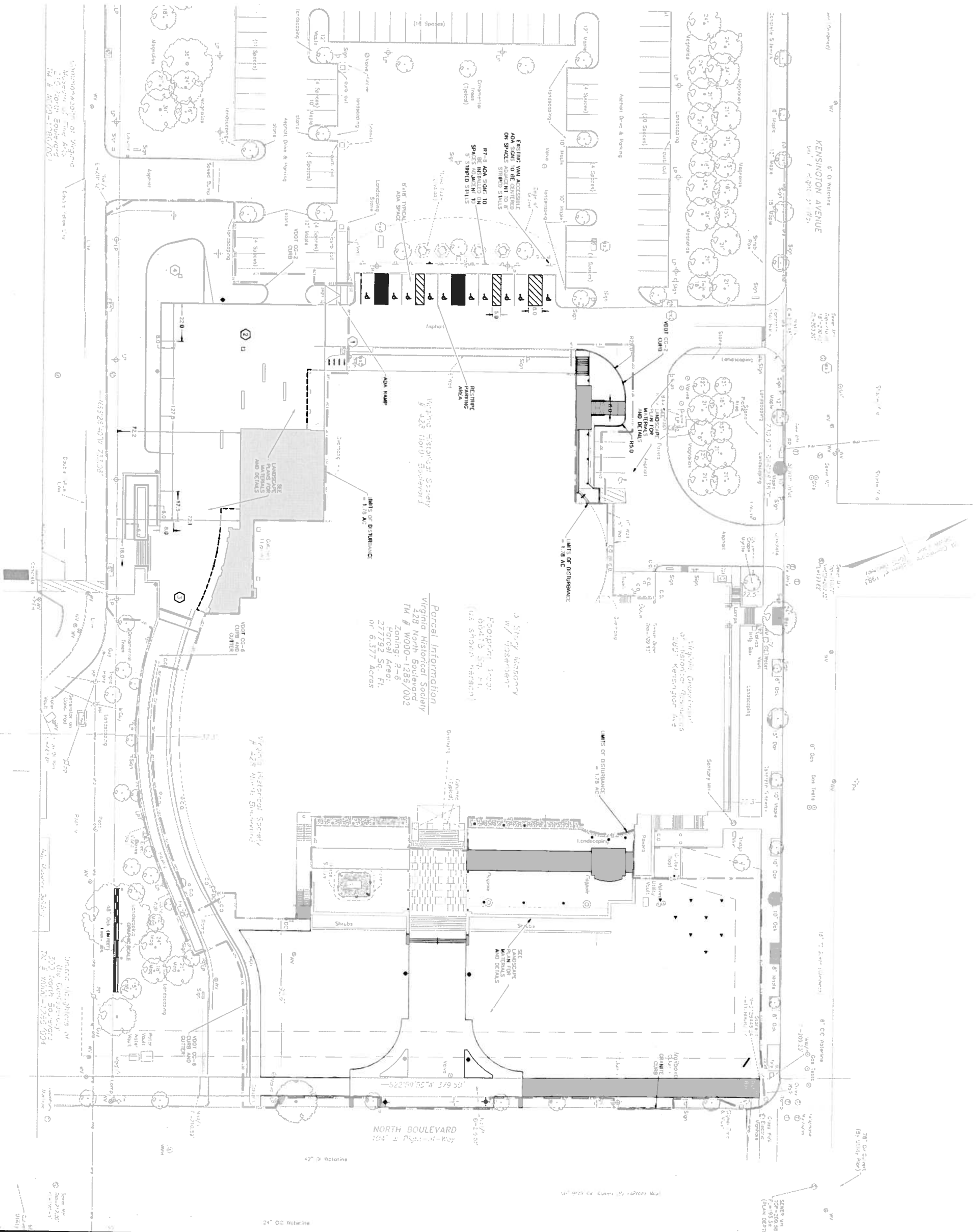
**DRAWN BY:** CHECKED BY:

**REVISIONS**

**NO DATE DESCRIPTION**

**SITE PLAN**

**SHEET NUMBER**  
C4.0



**GLAVÉ & HOLMES ARCHITECTURE**

2101 East Main Street  
Richmond, VA 23223  
T 804 649 9303 F 804 34 137  
W www.glavendholmes.com

**PROJECT TITLE**  
VIRGINIA HISTORICAL SOCIETY - STORY O VIRGINIA CAM AIGN RENOVATIONS

**PART B - SO**  
ENTRANCE CON AND SITE MODI IC TIONS  
VIRGINIA HISTORICAL SOCIETY  
428 N. BOULEVARD  
RICHMOND, VIRGINIA

**CONSULTANTS**  
STRUCTURA NG N  
STRUDLO, PERCE & ASSOCIATES, LTD.  
1000 COMMONWEALTH BLVD. SUITE 1000  
GLENN ALLEN, VIRGINIA 22182  
T 804-246-3935 F 804-246-1171

**MECHANICAL ENGINEER**  
ENGINEERS PLUS, SUITE 200  
RICHMOND, VIRGINIA 23226  
T 804-981-0845 F 804-981-0846

**LANDSCAPE ARCHITECT**  
HUGHES & GERTSMANER  
RICHMOND, VIRGINIA 23226  
T 804-782-7500 F ...



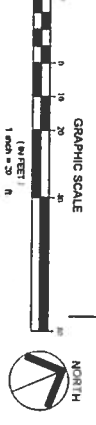
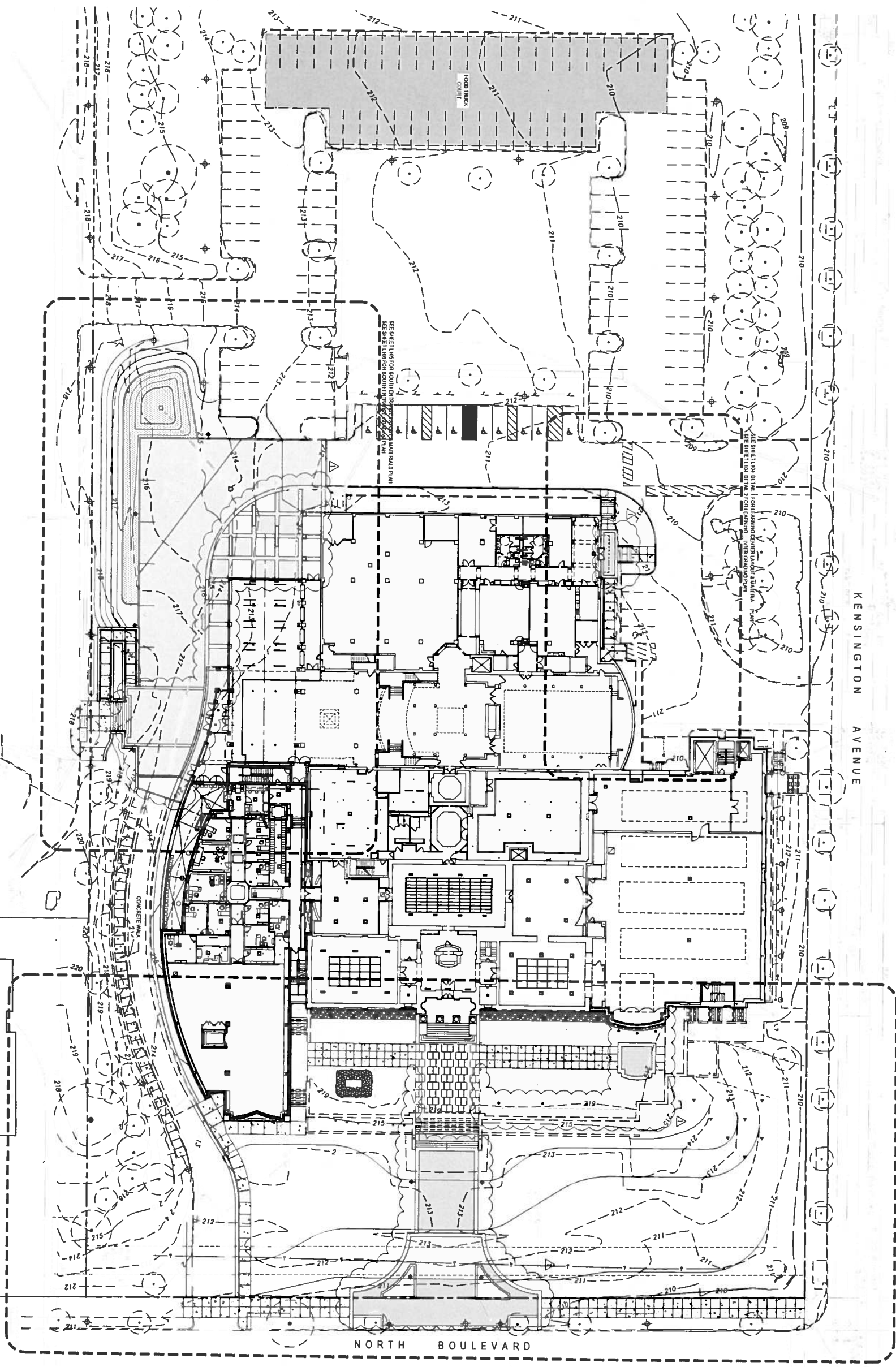
**PROJECT NUMBER**  
21032

**DATE**  
November 15, 2013

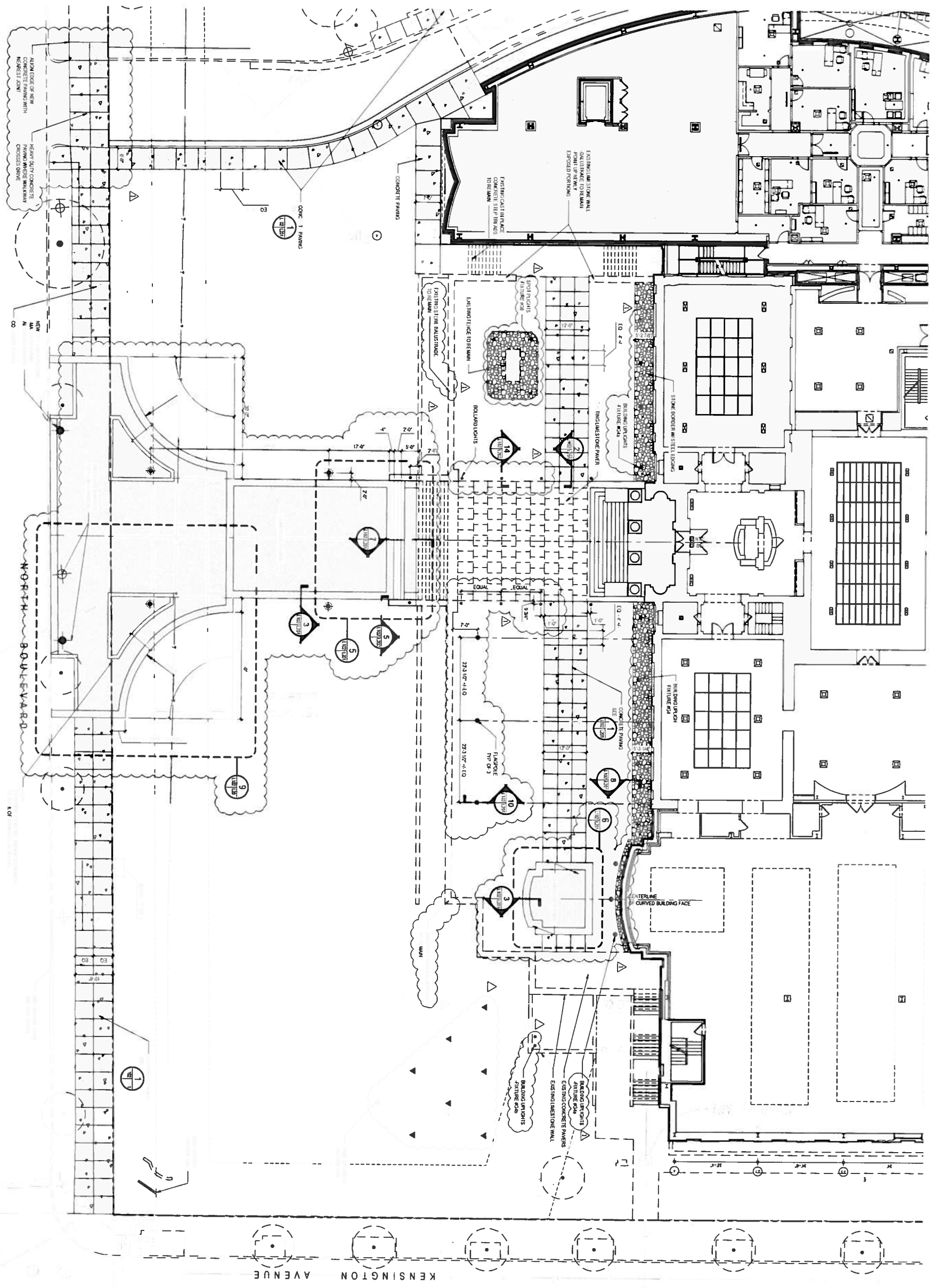
**DATE CHECKED BY:**  
**REVISIONS**  
DATE DESCRIPTION  
12/20/13 REVISION 1

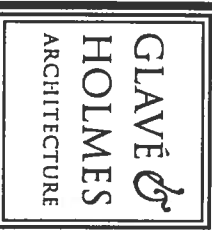

**SHEET NUMBER**  
**OVERALL SITE PLAN**

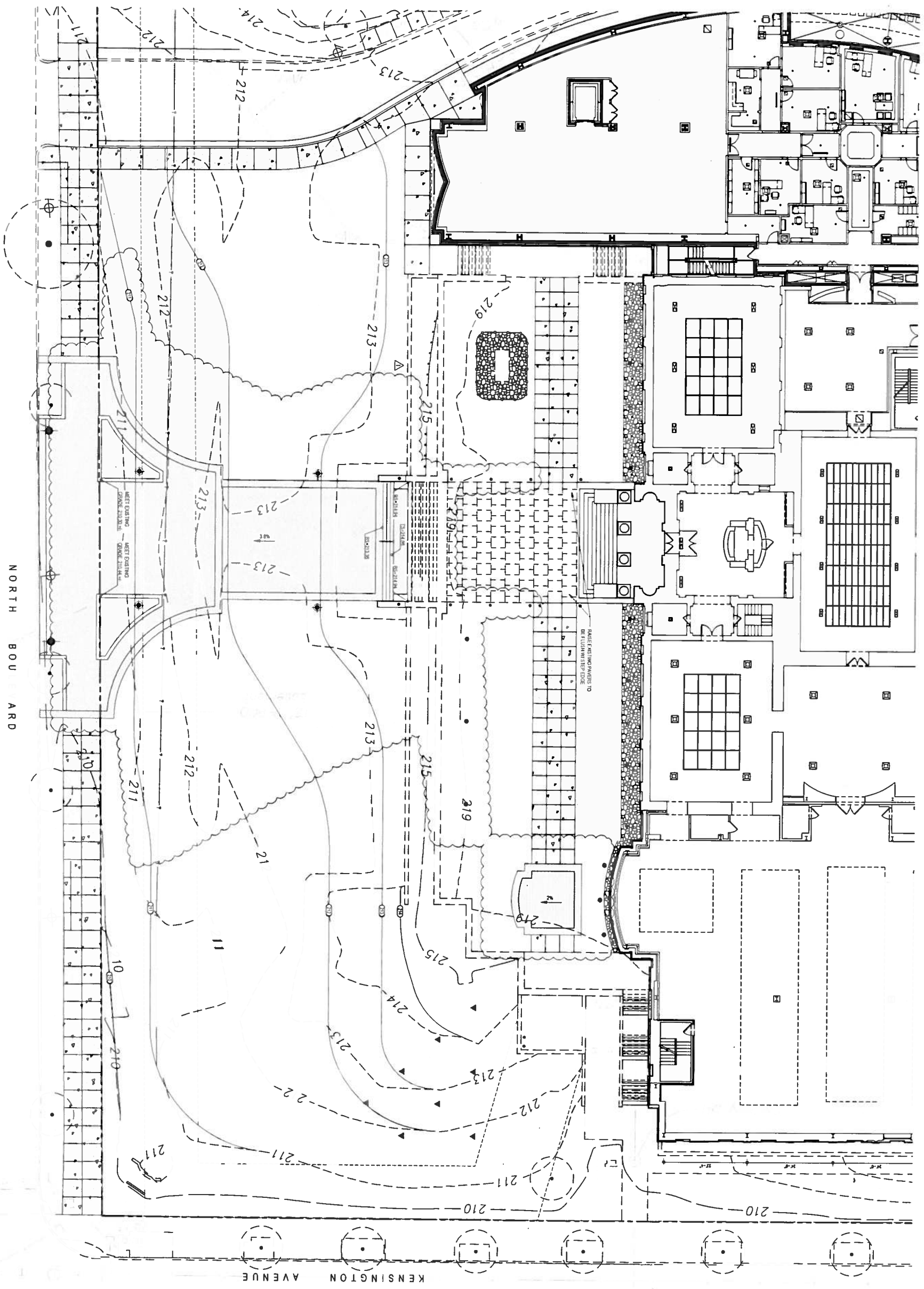
**L101**







	
1101 East Main Street Richmond, Virginia 23223 P 804 649 9303 F 804 343 1378 W www.glaveandholmes.com	
<b>PROJECT TITLE</b> VIRGINIA HISTORICAL SOCIETY - STORY OF VIRGINIA CAMPAIGN RENOVATIONS <b>PART B - SOUTH ENTRANCE CONSTRUCTION AND SITE MODIFICATIONS</b> VIRGINIA HISTORICAL SOCIETY 428 N. ROUTE 740 RICHMOND, VIRGINIA 23221	
<b>CONSULTANTS</b> <b>STRUCTURAL ENGINEER</b> STRUDING, PIERCE & ASSOCIATES, LTD. 4199 COX ROAD, SUITE 110 GLEN ALLEN, VIRGINIA 23060 T 804-246-9135 F 804-246-1171 <b>MECHANICAL/ELECTRICAL ENGINEER</b> ENGINEERS PLUS 2000 HANICRAFT RD., SUITE 200 RICHMOND, VIRGINIA 23228 T 804-501-0845 F 804-501-0846 <b>LANDSCAPE ARCHITECT</b> HOGGINS & GERTSCHLAGER 5701 Green Avenue RICHMOND, VIRGINIA 23226 T 804-782-7500 F	
SEAL 	<b>PROJECT NUMBER</b> 21032  <b>DATE</b> November 15, 2013  <b>DRAWN BY</b> CHECKED BY  <b>NO DATE DESCRIPTION</b> 122413 REVISION
<b>TITLE</b> BLVD. ENTRANCE LAYOUT PLAN  <b>NUMBER</b> <b>L102</b>	



**GLAVÉ & HOLMES ARCHITECTURE**

2101 East Main Street  
 Richmond, Virginia 23223  
 T 804 649 9303 F 804 343 1378  
 M www.glaveandholmes.com

**PROJECT TITLE**  
 VIRGINIA HISTORICAL SOCIETY - STORY OF VIRGINIA CAMPAIGN RENOVATIONS

**PART B - SOUTH ENTRANCE CONSTRUCTION AND SITE MODIFICATIONS**  
 VIRGINIA HISTORICAL SOCIETY  
 428 N. ROULEYARD  
 RICHMOND, VIRGINIA 23221

**CONSULTANTS**

**STRUCTURAL ENGINEER**  
 STRONG & POUND ASSOCIATES, LTD.  
 4176 ECK ROAD, SUITE 100  
 GLEN ALLEN, VIRGINIA 23060  
 T 804-346-3935 F 804-346-1171

**ME/P/E/ASP ENGINEER**  
 ENGINEERING BY  
 2000 JONCKHEART RD., SUITE 200  
 RICHMOND, VIRGINIA 23228  
 T 804-501-0845 F 804-501-0846

**LANDSCAPE ARCHITECT**  
 HARGRE & GASTENBERGER  
 3701 Green Valley Parkway  
 RICHMOND, VIRGINIA 23226  
 T 804-782-7500 F ..

**PROJECT NUMBER**  
 21032

**DATE**  
 November 15, 2013

**DRAWN BY:** \_\_\_\_\_

**CHECKED BY:** \_\_\_\_\_

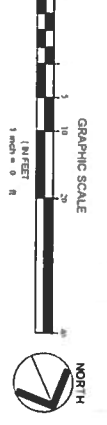
**REVISIONS**

NO.	DATE	DESCRIPTION
1	12/20/13	REVISION 1



**SHEET TITLE**  
 BLVD. ENTRANCE GRADING PLAN

**SHEET NUMBER**  
 L103



**GLAVÉ & HOLMES**  
ARCHITECTURE

2101 East Main Street  
Richmond, Virginia 23223  
T 804.649.9301 F 804.343.2378  
W www.glaveandholmes.com

**PROJECT TITLE**  
VIRGINIA HISTORICAL SOCIETY - STORY OF VIRGINIA CAMPAIGN RENOVATIONS

**PART B - SOUTH**  
ENTRANCE CONSTRUCTION AND SITE MODIFICATIONS  
VIRGINIA HISTORICAL SOCIETY  
424 N. DORCHESTER  
RICHMOND, VIRGINIA 23221

**CONSULTANTS**

**STRUCTURAL ENGINEER**  
STROUD, FENCE & ASSOCIATES, LTD.  
4198 COX ROAD, SUITE 110  
GLENN ALLEN, VIRGINIA 23060  
T 804-546-2933 F 804-546-1171

**MEP/FANSP ENGINEER**  
ENGINEERS PLUS  
2900 BURNING RD., SUITE 200  
RICHMOND, VIRGINIA 23226  
T 804-591-0893 F 804-591-0846

**LANDSCAPE ARCHITECT**  
HIGGINS & GERTSMAYER  
3701 Grove Avenue  
RICHMOND, VIRGINIA 23226  
T 804-782-1200 F



**PROJECT NUMBER**  
21032

**DATE**  
November 15, 2013

**DRAWN BY:** CHECKED BY:

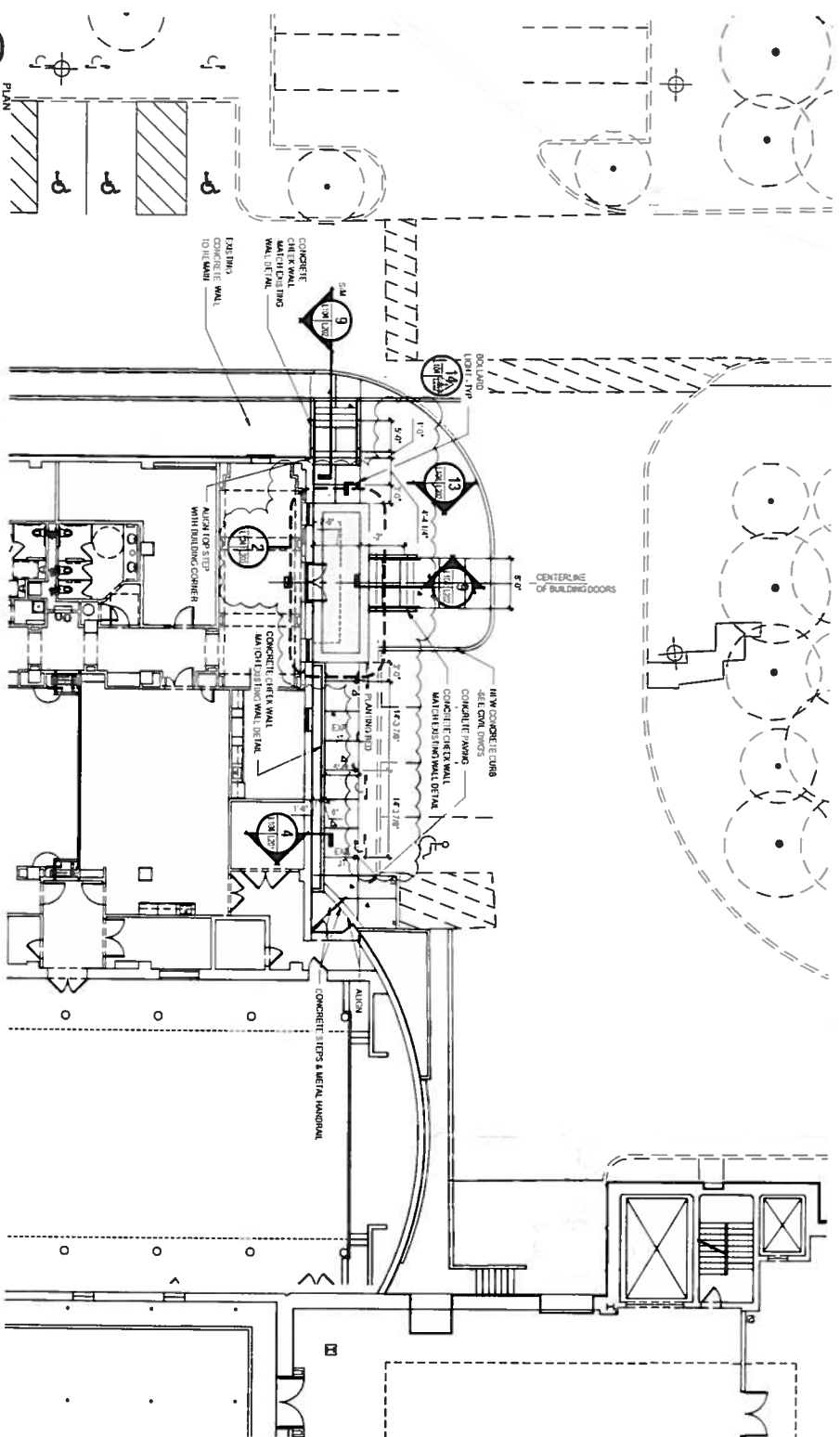
**REVISIONS**  
NO. DATE DESCRIPTION  
Δ IZZATA REVISION 1

**SHEET TITLE**  
LEARNING CENTER  
LAYOUT & GRADING  
PLANS

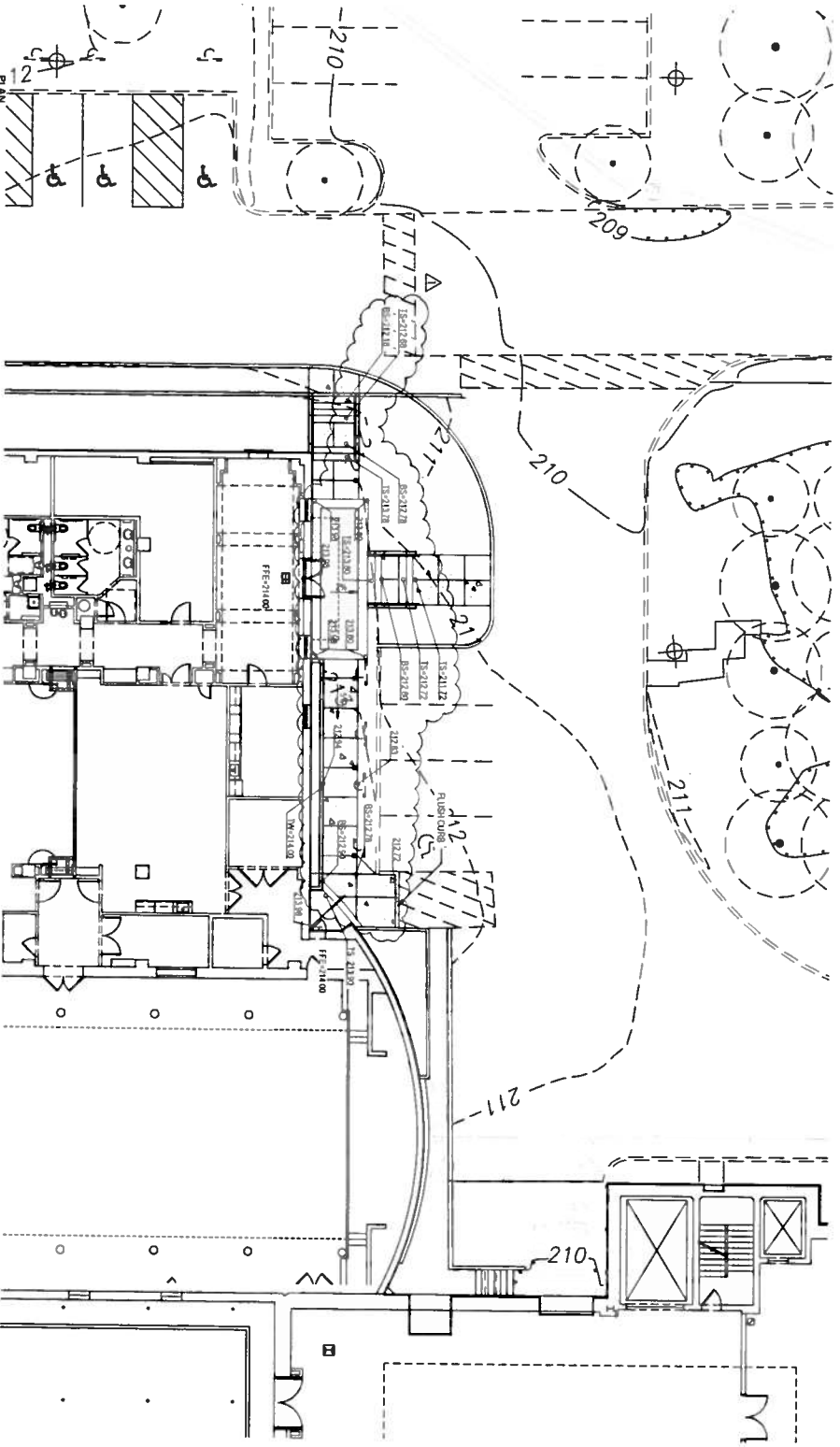
**SHEET NUMBER**

**L104**

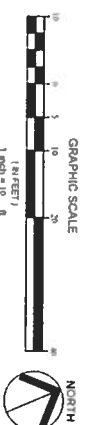
Copyright 2013, Glenn A. Stroud and Associates, Ltd. All rights reserved. This drawing is the property of Glenn A. Stroud and Associates, Ltd. and is not to be reproduced or transmitted in any form or by any means, electronic, mechanical, photocopying, recording, or by any information storage and retrieval system, without the prior written permission of Glenn A. Stroud and Associates, Ltd.



**1** LEARNING CENTER LAYOUT & MATERIALS PLAN  
SCALE: 1" = 10'-0"



**2** LEARNING CENTER GRADING PLAN  
SCALE: 1" = 10'-0"



**GLAVÉ & HOLMES ARCHITECTURE**

2101 East Main Street  
Richmond, Virginia 23221  
T 804 649 9303 F 804 343 3278  
W www.glavesholmes.com

**PROJECT TITLE**  
VIRGINIA HISTORICAL SOCIETY - STORY OF VIRGINIA CAMPAIGN RENOVATIONS

**PART B - SOUTH ENTRANCE CONSTRUCTION AND SITE MODIFICATIONS**  
VIRGINIA HISTORICAL SOCIETY  
428 N. BOWEN ROAD  
RICHMOND, VIRGINIA 23221

**CONSULTANTS**

**STRUCTURAL ENGINEER**  
STROUD, FENCE & ASSOCIATES, LTD  
4198 COX ROAD, SUITE 110  
RICHMOND, VIRGINIA 23226  
T 804-346-1315

**MECHANICAL ENGINEER**  
ENGINEERS PLUS  
2000 BRIDGEMAN RD., SUITE 200  
RICHMOND, VIRGINIA 23226  
T 804-501-0845

**LANDSCAPE ARCHITECT**  
HIGGINS & GERSTENMAKER  
3701 GORAN AVENUE  
RICHMOND, VIRGINIA 23226  
T 804-740-7500



**PROJECT NUMBER**  
21032

**DATE**  
November 15, 2013

**DRAWN BY:** CHECKED BY:

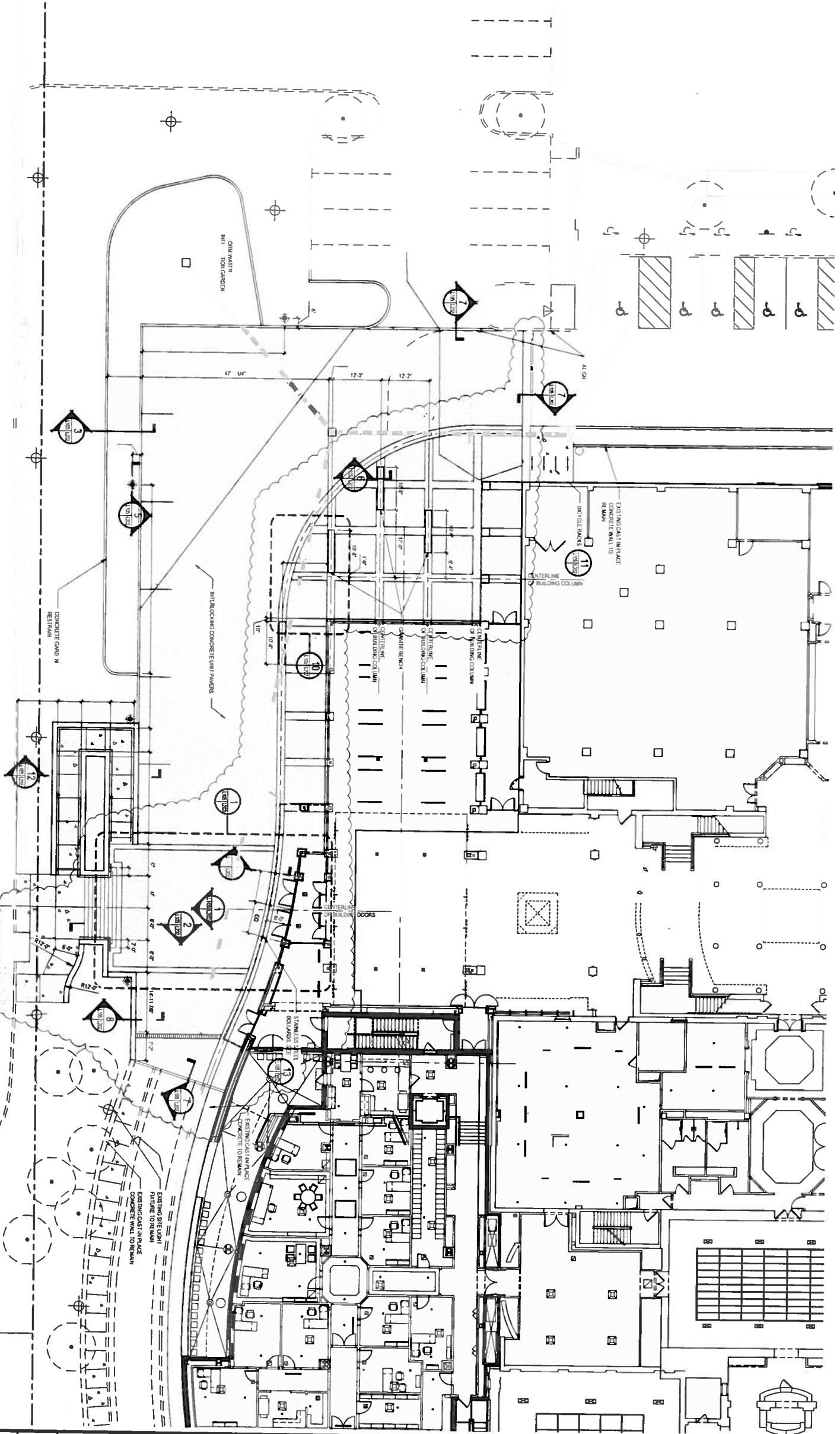
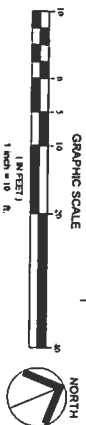
**REVISIONS**  
NO. DATE DESCRIPTION  
1 12/20/13 REVISION 1

**SHEET TITLE**  
SOUTH ENTRANCE LAYOUT PLAN

**SHEET NUMBER**

**L105**

**GRAPHIC SCALE**  
1 INCH = 10 FT



**GLAVE & HOLMES**  
ARCHITECTURE

2101 East Main Street  
Richmond, Virginia 23223  
T 804 649 9303 F 804 343 3278  
W www.glaveandholmes.com

**PROJECT TITLE**  
VIRGINIA HISTORICAL SOCIETY - STORY OF VIRGINIA CAMPAIGN RENOVATIONS

**PART B - SOUTH ENTRANCE CONSTRUCTION AND SITE MODIFICATIONS**  
VIRGINIA HISTORICAL SOCIETY  
428 N. BOULEVARD  
RICHMOND, VIRGINIA 23221

**CONSULTANTS**

**STRUCTURAL ENGINEER**  
STRONG, FISHER & ASSOCIATES, LTD.  
418 COM. ROAD, SUITE 110  
GLENN ALLEN, VIRGINIA 23060  
T 804-546-3935 F 804-546-1171

**MECHANICAL ENGINEER**  
ENGINEERS # INC.  
2080 HUNTINGTON RD., SUITE 200  
RICHMOND, VIRGINIA 23228  
T 804-501-0845 F 804-501-0846

**LANDSCAPE ARCHITECT**  
MCCORMICK & GIBBERTMAN  
3701 GORMAN AVENUE  
RICHMOND, VIRGINIA 23225  
T 804-742-7900 F ...



**PROJECT NUMBER**  
21032

**DATE**  
November 15, 2013

**DRAWN BY:** CHECKED BY:

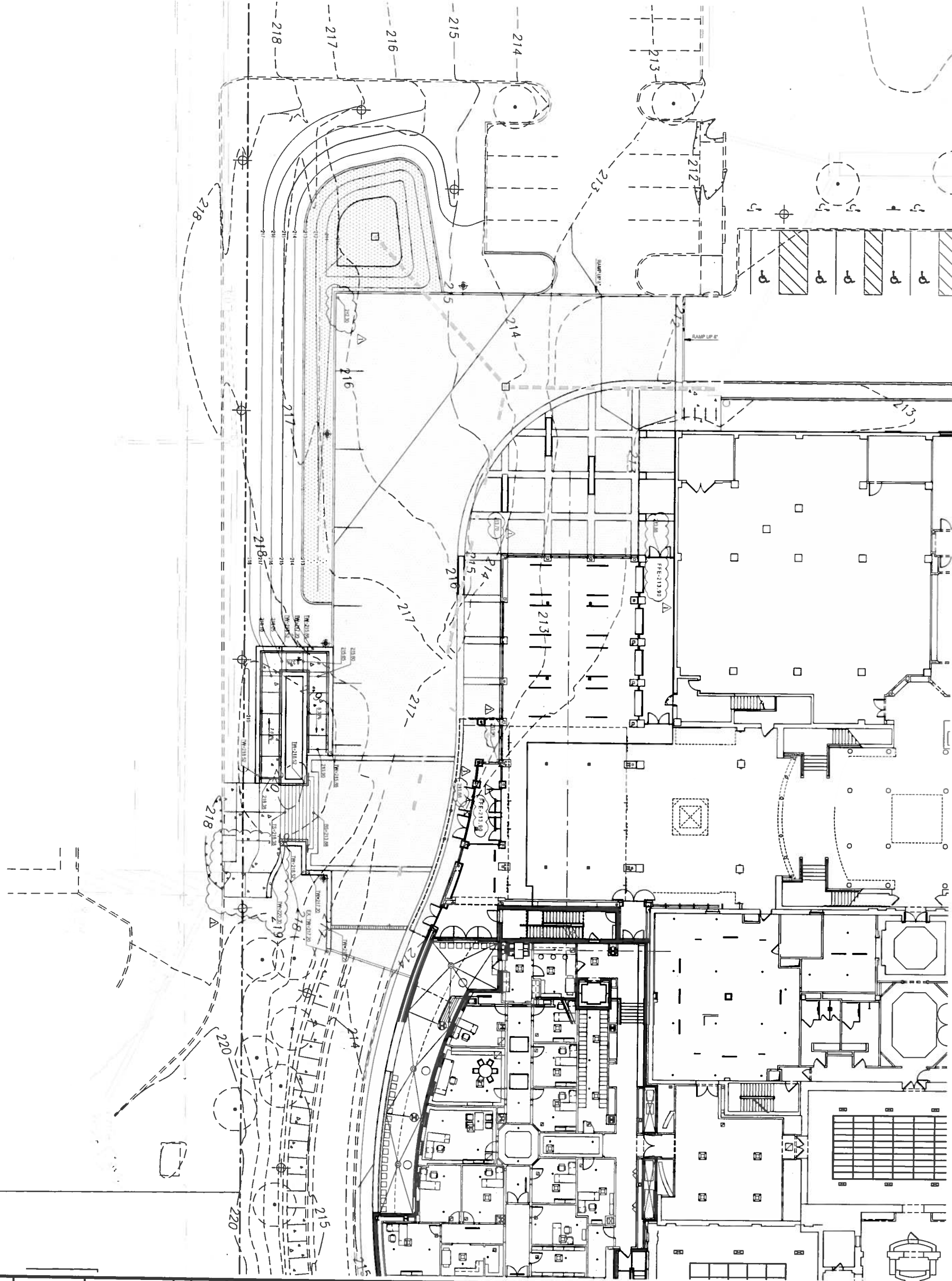
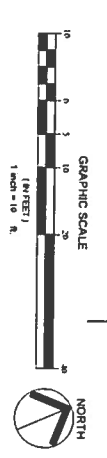
**REVISIONS**

NO.	DATE	DESCRIPTION
1	12/23/13	REVISION 1

**SHEET TITLE**  
SOUTH ENTRANCE GRADING PLAN

**SHEET NUMBER**

**L106**



**GLAVÉ & HOLMES ARCHITECTURE**

2101 East Main Street  
Richmond, Virginia 23221  
T 804.649.9101 F 804.341.3178  
W www.glavesholmes.com

**PROJECT TITLE**  
VIRGINIA HISTORICAL SOCIETY - STORY OF VIRGINIA CAMPAIGN RENOVATIONS

**PART B - SOUTH**  
ENTRANCE CONSTRUCTION AND SITE MODIFICATIONS  
VIRGINIA HISTORICAL SOCIETY  
425 N. 30th Street  
RICHMOND, VIRGINIA 23221

**CONTRACTORS**  
STRUCTURAL ENGINEER  
STROUD PRYKE & ASSOCIATES, LTD.  
6050 W. WOODLAND AVENUE  
CLAYTON, VIRGINIA 23060  
T 804.346.3935 F 804.346.1171

**MECHANICAL ENGINEER**  
MERRIFIELD ENGINEERS PLUS  
3000 W. WOODLAND AVENUE  
RICHMOND, VIRGINIA 23226  
T 804.501.0845 F 804.501.0846

**LANDSCAPE ARCHITECT**  
HODGINS & GIBSTER/MANN  
5011 LOCUST AVENUE  
RICHMOND, VIRGINIA 23226  
T 804.746.7500 F...



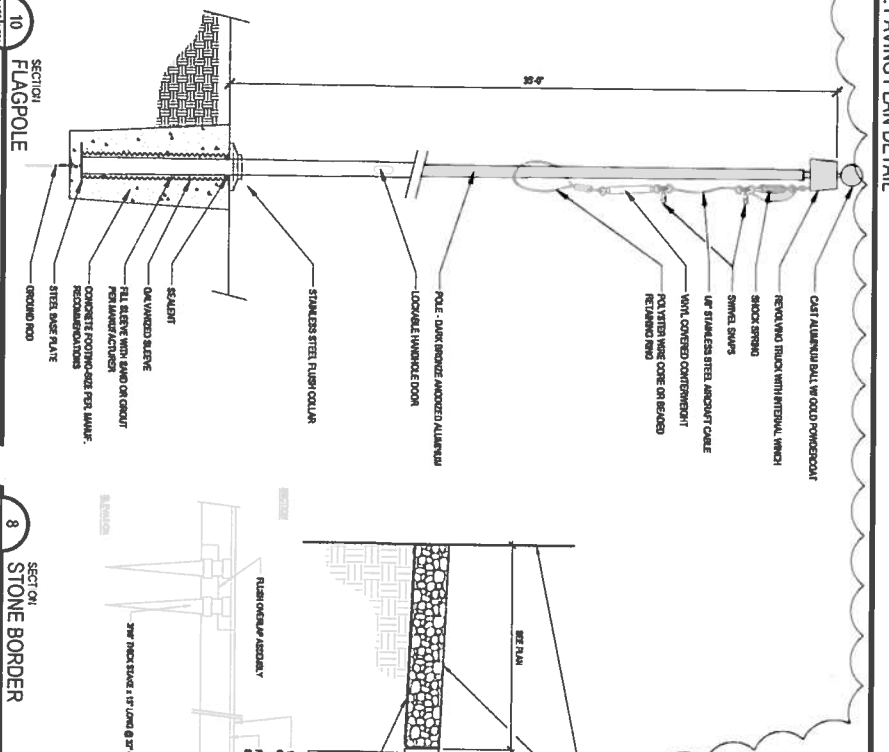
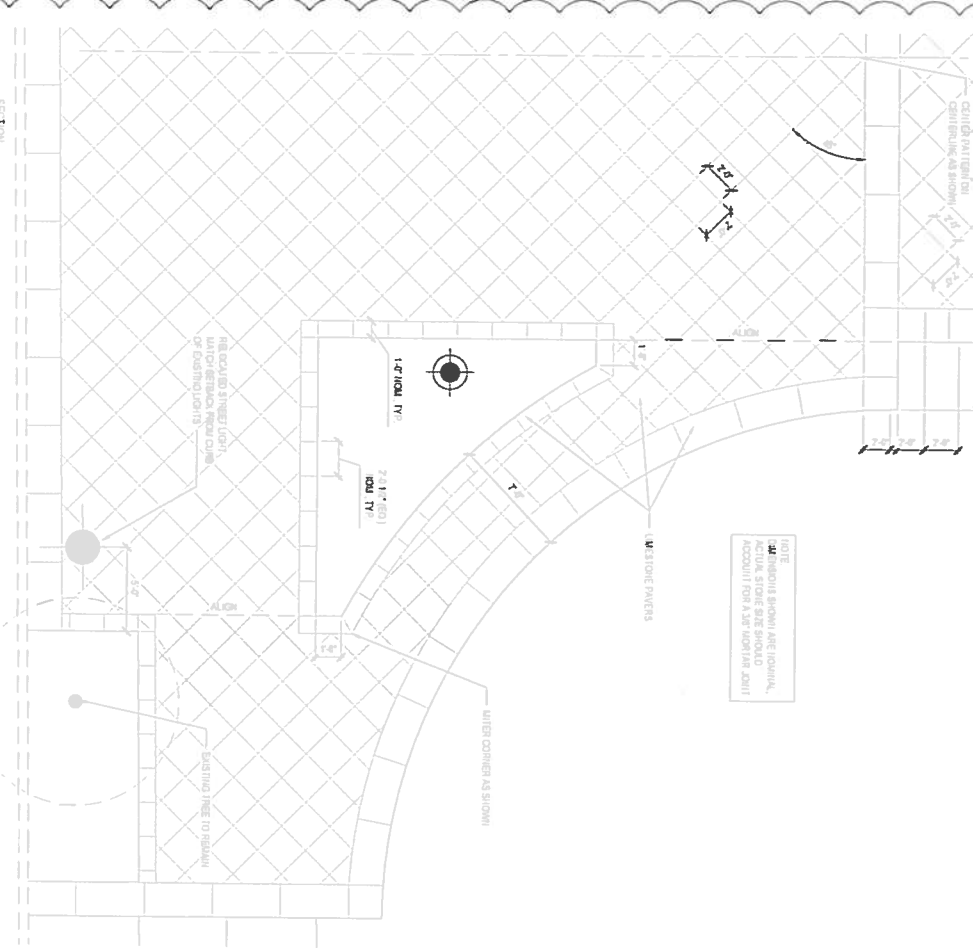
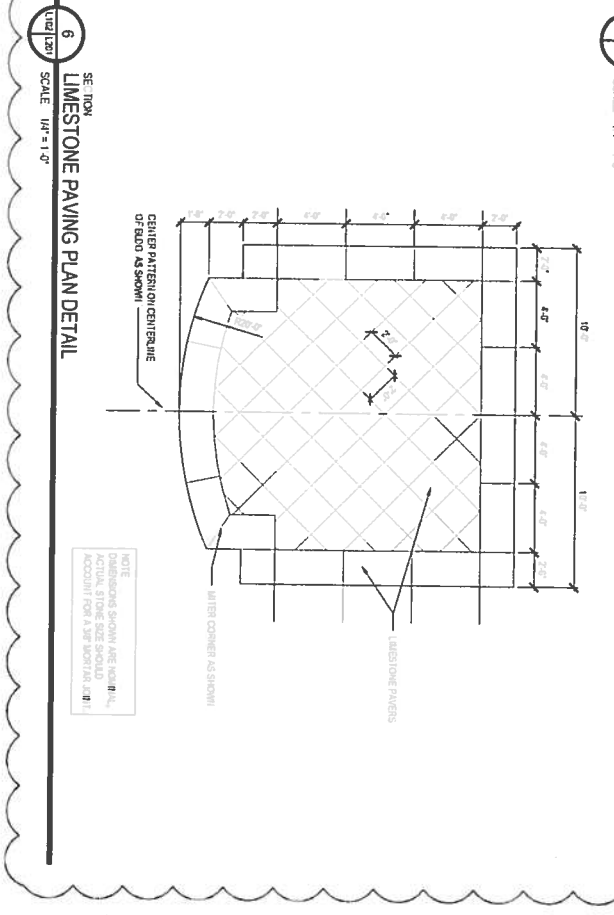
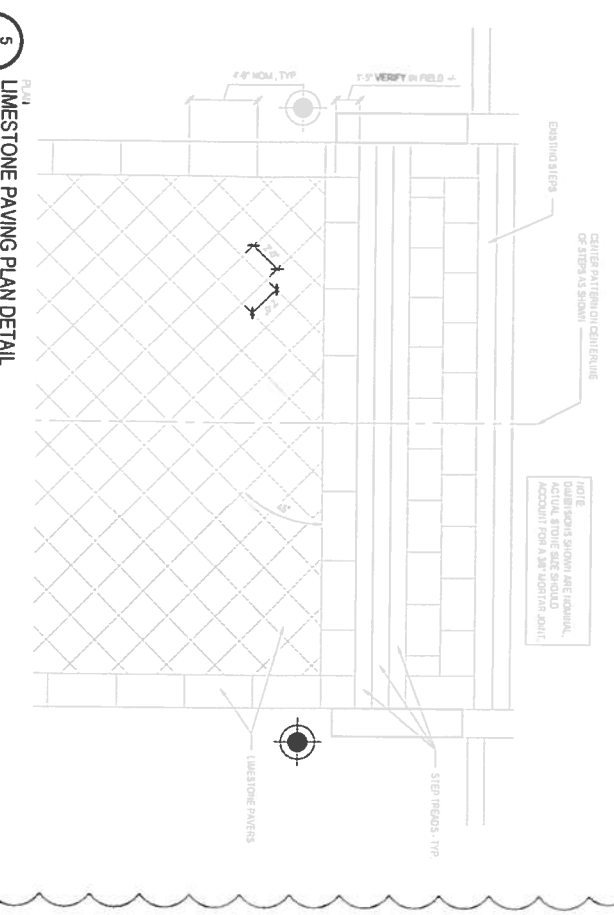
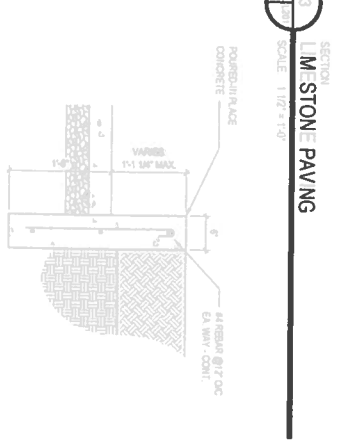
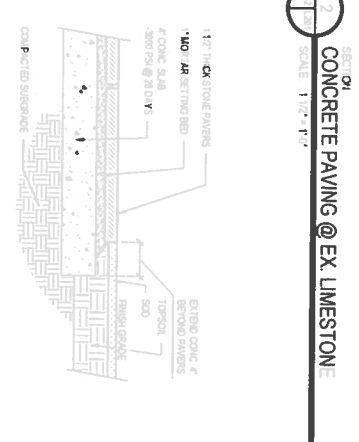
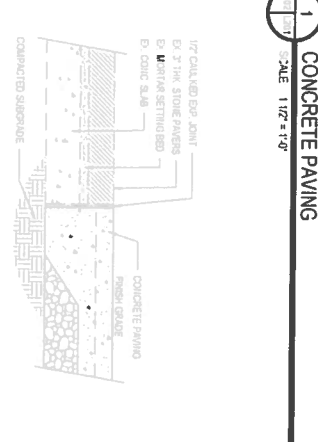
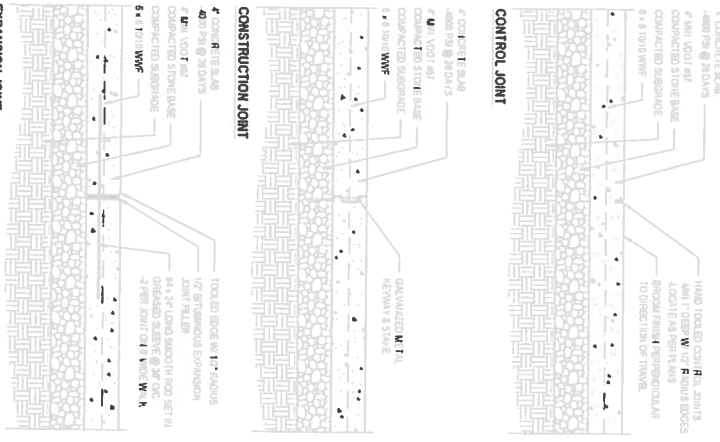
**PROJECT NUMBER**  
21032  
**DATE**  
November 15, 2013

**DESIGN BY**  
KATHY VAN DINE  
**CHECKED BY**  
[Signature]

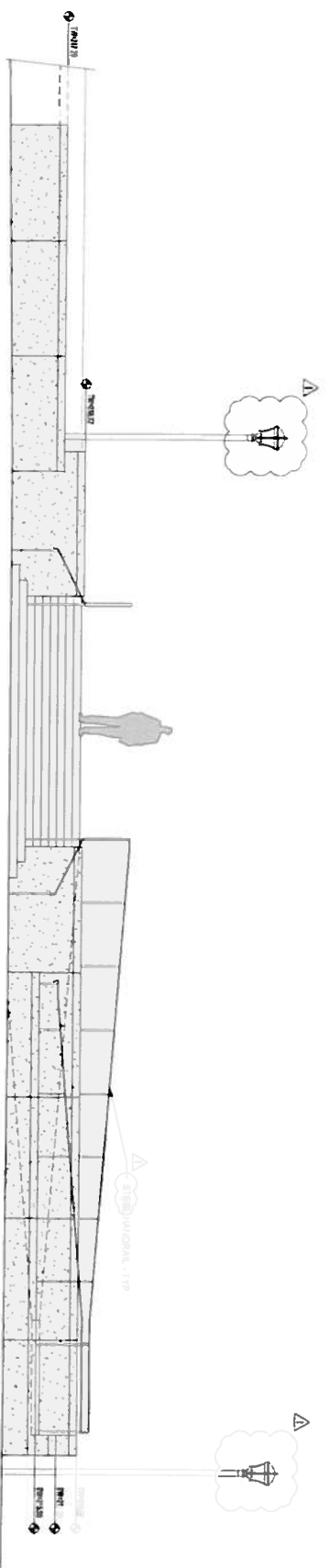
**NO. DATE DESCRIPTION**  
1 12/23/13 REVISION 1

**SHEET TITLE**  
BLVD. ENTRANCE DETAILS

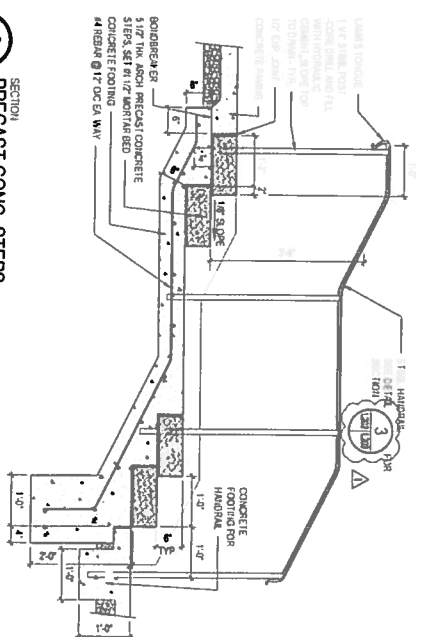
**SHEET NUMBER**  
L201



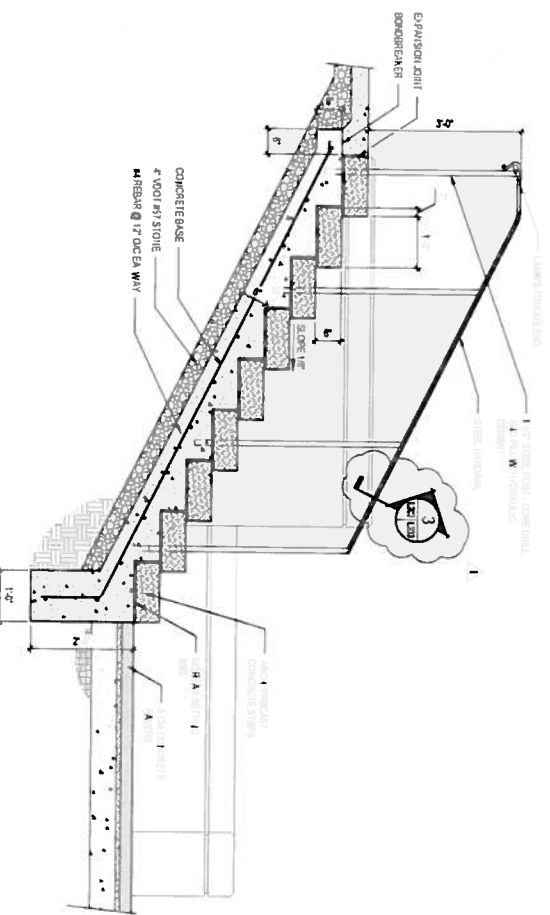
<b>REVISIONS</b>	
NO. DATE DESCRIPTION	CHECKED BY:
1 12/23/13 REVISION 1	[Signature]
<b>SHEET NUMBER</b>	
<b>L201</b>	



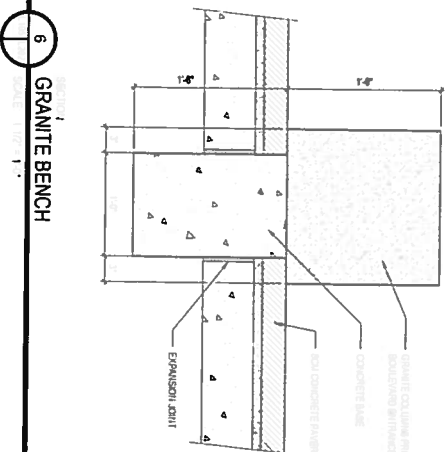
SECTION 1  
SOUTH ENTRANCE STEPS AND RAMP  
SCALE: 3/4" = 1'-0"



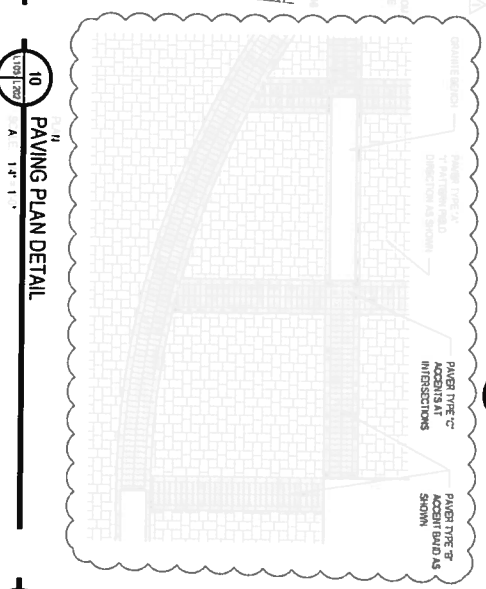
SECTION 9  
PRECAST CONC. STEPS  
SCALE: 3/4" = 1'-0"



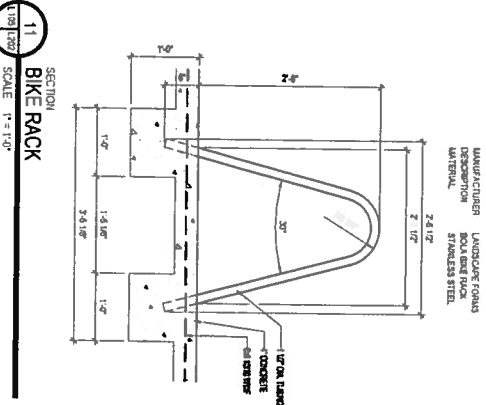
SECTION 2  
SOUTH ENTRANCE STEPS  
SCALE: 3/4" = 1'-0"



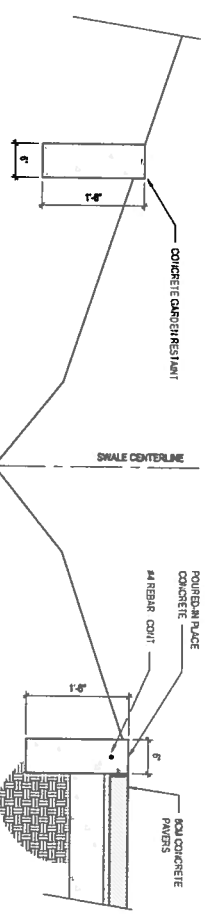
SECTION 6  
GRANITE BENCH  
SCALE: 1/2" = 1'-0"



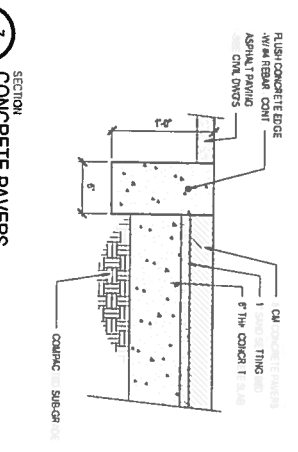
SECTION 10  
PAVING PLAN DETAIL  
SCALE: 1/2" = 1'-0"



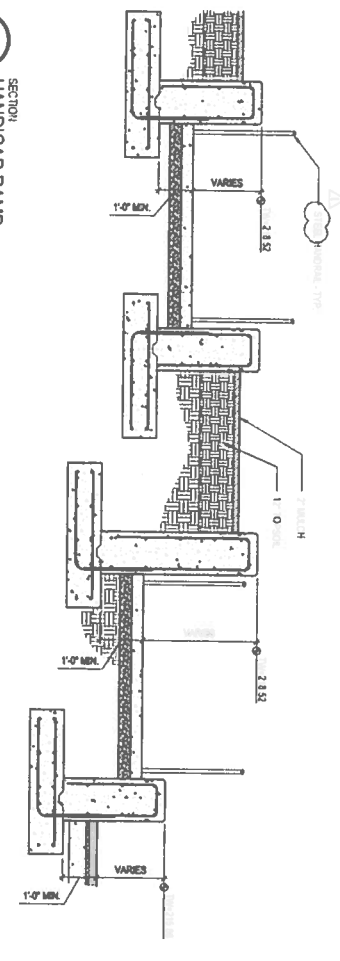
SECTION 11  
BIKE RACK  
SCALE: 1/2" = 1'-0"



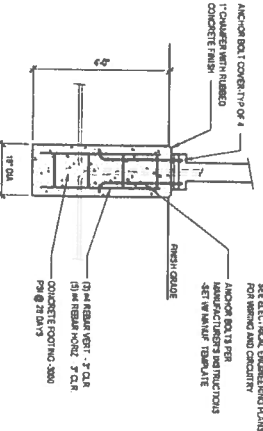
SECTION 3  
STORM WATER INFILTRATION GARDEN  
SCALE: 1/2" = 1'-0"



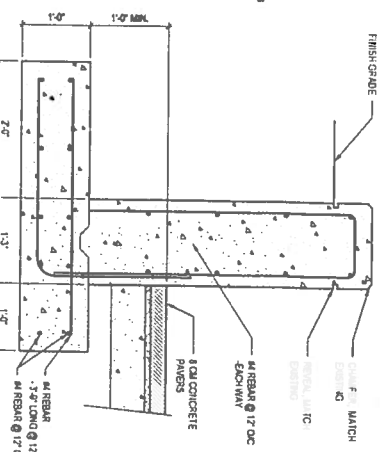
SECTION 7  
CONCRETE PAVERS  
SCALE: 1/2" = 1'-0"



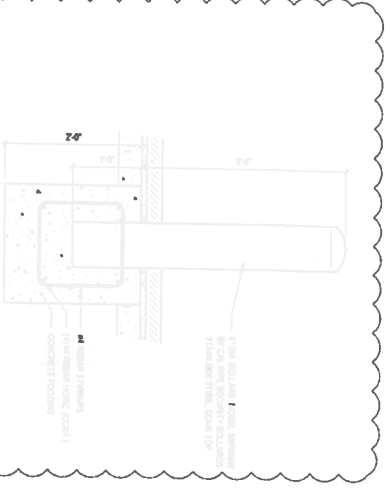
SECTION 12  
HANDICAP RAMP  
SCALE: 1/2" = 1'-0"



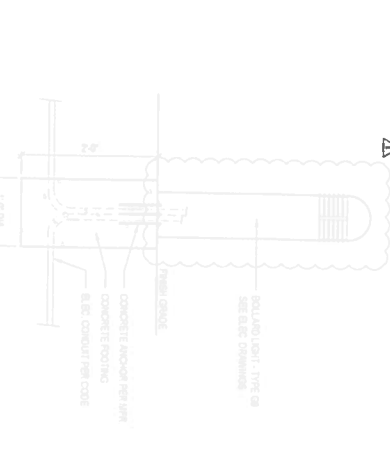
SECTION 5  
SITE LIGHT FOOTING  
SCALE: 1/2" = 1'-0"



SECTION 8  
CONCRETE RETAINING WALL  
SCALE: 1/2" = 1'-0"



SECTION 13  
STAINLESS STEEL BOLLARD  
SCALE: 1/2" = 1'-0"



SECTION 4  
LARD LIGHT  
SCALE: 1/2" = 1'-0"

**GLAVÉ & HOLMES ARCHITECTURE**

101 East Main Street  
Richmond, Virginia 23221  
T 804 649 0303 F 804 343 3178  
W www.glaveholmes.com

PROJECT TITLE  
VIRGINIA HISTORICAL SOCIETY - STORY OF VIRGINIA CAMPFIRE RENOVATIONS

PART B - SOUTH ENTRANCE CONSTRUCTION AND SITE MODIFICATIONS  
VIRGINIA HISTORICAL SOCIETY  
428 N. BOUTWELL ROAD  
RICHMOND, VIRGINIA 23221

CONSULTANTS  
STRUCTURAL ENGINEER  
STUBBS, PRINCE & ASSOCIATES, LTD.  
3705 CANTON ROAD, SUITE 1100  
CITY CENTER BUILDING  
RICHMOND, VA 23220  
T 804-746-3935 F 804-346-1371

MET/PA/SIP ENGINEER  
ENGINEERS PLUS  
2001 HANCOCK ROAD, SUITE 200  
RICHMOND, VIRGINIA 23220  
T 804-301-0800 F 804-301-0806

LANDSCAPE ARCHITECT  
HIGGINS & GERSTENMAKER  
5701 Grove Avenue  
RICHMOND, VIRGINIA 23226  
T 804-420-7900 F ...

PROJECT NUMBER  
21032

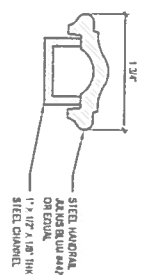
DATE  
November 15, 2013

DRAWN BY: CHECKED BY:

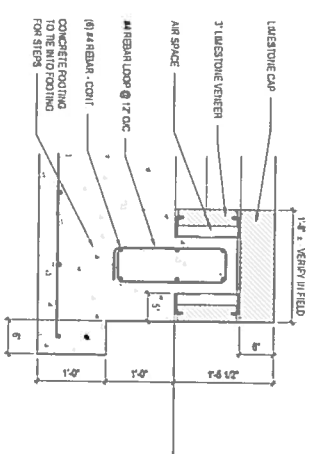
REVISIONS  
NO. DATE DESCRIPTION  
1 12/21/13 REVISION 1

SHEET NUMBER  
**L202**

SHEET TITLE  
LEARNING CENTER & SOUTH ENTRANCE DETAILS



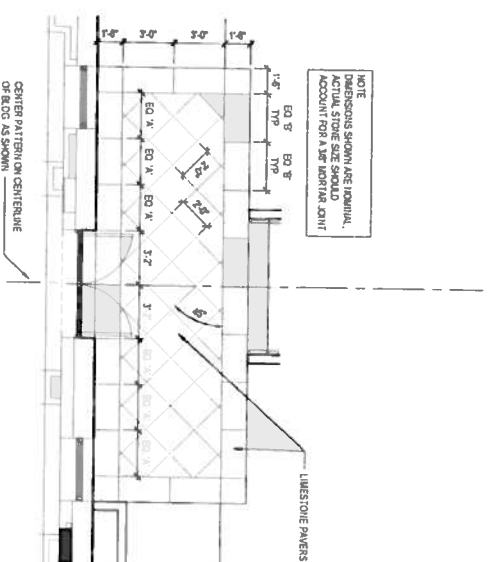
SECTION  
3 STEEL HANDRAIL  
SCALE: 1/4" = 1'-0"



SECTION  
4 CHEEK WALL  
SCALE: 1/4" = 1'-0"



PLAN  
1 PAVING PLAN DETAIL  
SCALE: 1/4" = 1'-0"



PLAN  
2 PAVING PLAN DETAIL  
SCALE: 3/8" = 1'-0"

**GLAVÉ & HOLMES**  
ARCHITECTURE

3101 East Main Street  
Richmond, Virginia 23221  
T 804 649 9101 F 804 341 3178  
W www.glaveholmes.com

**PROJECT TITLE**  
VIRGINIA HISTORICAL SOCIETY - STUYVE- VIRGINIA CAMPAIGN RENOVATIONS

**PART B - SOUTH ENTRANCE CONSTRUCTION AND SITE MODIFICATIONS**  
VIRGINIA HISTORICAL SOCIETY  
415 N. BALEYARD  
RICHMOND, VIRGINIA 23221

**CONSULTANTS**

**STRUCTURAL ENGINEER**  
STROUD, PENCE & ASSOCIATES, LTD.  
4158 COLLETT ROAD, SUITE 110  
CLAYTON, VIRGINIA 23066  
T 804 346 5923 F 804 346 1171

**MEP/FASP ENGINEER**  
ENGINEERS PLUS  
2700 HANLANTY RD., SUITE 200  
RICHMOND, VIRGINIA 23228  
T 804 351 0845 F 804 351 0846

**LANDSCAPE ARCHITECT**  
HEICIG & GORTENWALLER  
5701 Grove Avenue  
RICHMOND, VIRGINIA 23226  
T 804 467 7500 F ..



**PROJECT NUMBER**  
21032

**DATE**  
November 15, 2013

**DRAWN BY:** CHECKED BY:

**REVISIONS**

**NO. DATE DESCRIPTION**

1 12/21/13 REVISION 1

**SHEET TITLE**

MISC. DETAILS

**SHEET NUMBER**

**L203**



**GLAVÉ & HOLMES**  
ARCHITECTURE

2101 East Main Street  
Richmond, Virginia 23223  
T 804 649 9303 F 804 343 3378  
W www.glaveandholmes.com

**PROJECT TITLE**  
VIRGINIA HISTORICAL SOCIETY - STORY OF VIRGINIA CAMPAIGN RENOVATIONS

**PART B - SOUTH ENTRANCE CONSTRUCTION AND SITE MODIFICATIONS**  
VIRGINIA HISTORICAL SOCIETY  
428 N. BOULEVARD  
RICHMOND, VIRGINIA 23211

**CONSULTANTS**

**STRUCTURAL ENGINEER**  
STRUDLO, PENCE & ASSOCIATES, LTD.  
6159 ALLEN, VIRGINIA 23060  
T 804-246-3135 F 804-246-1171

**ME/P/E/AS/P ENGINEER**  
ENGINEERS PLUS, SUITE 200  
RICHMOND, VIRGINIA 23228  
T 804-991-0845 F 804-991-0846

**LANDSCAPE ARCHITECT**  
MORRIS & GASTENBERGER  
5700 RICHMOND AVENUE  
RICHMOND, VIRGINIA 23226  
T 804-742-7900 F



**PROJECT NUMBER**  
21032

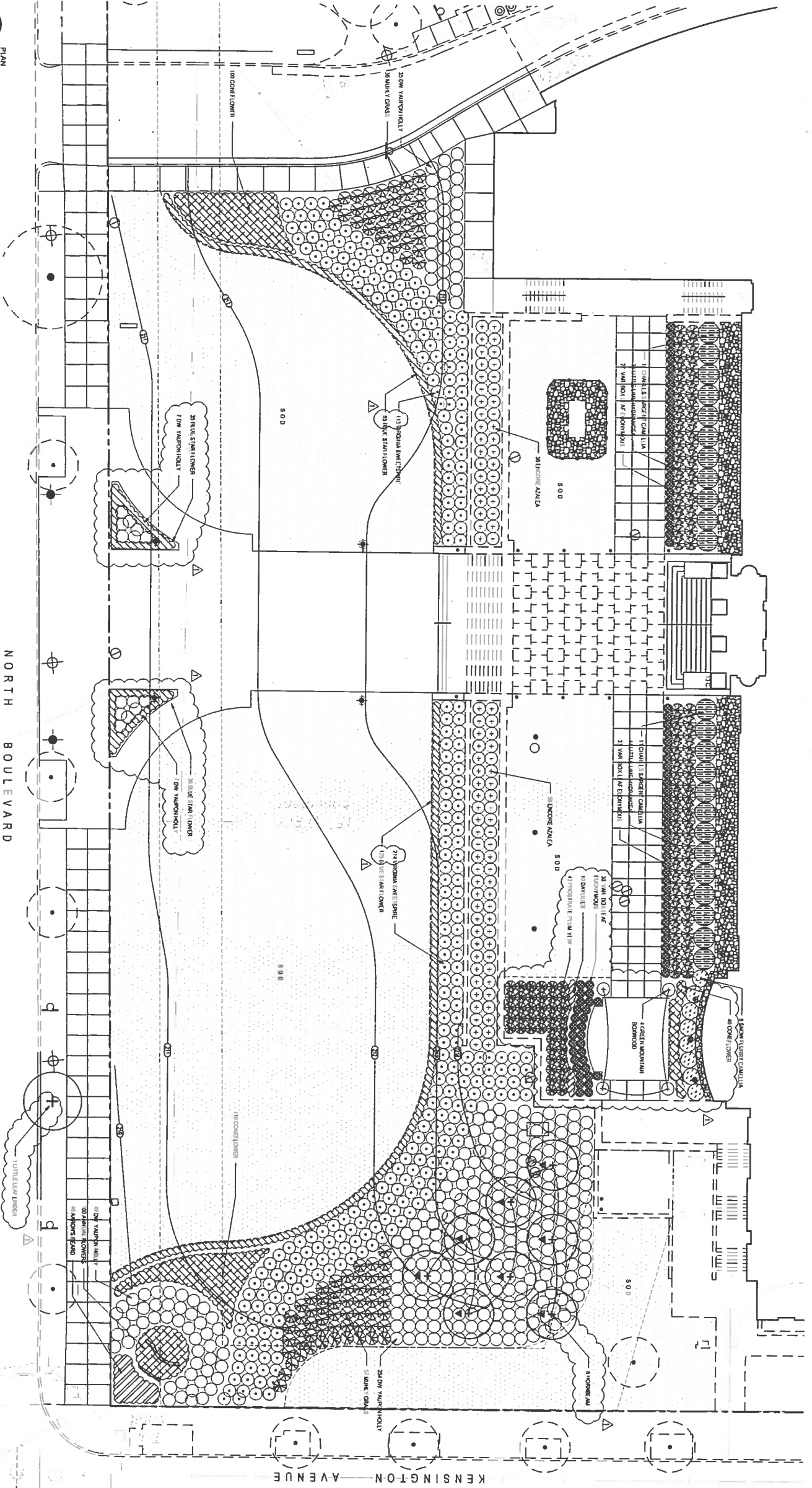
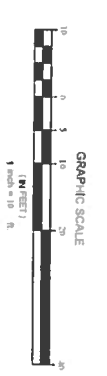
**DATE**  
November 15, 2013

**DRAWN BY:** CHECKED BY:

**REVISIONS**  
NO. DATE DESCRIPTION  
1 12/20/13 REVISION 1

**SHEET TITLE**  
FRONT ENTRANCE & LEARNING CENTER PLANTING PLANS

**SHEET NUMBER**  
L302



**1**  
FRONT ENTRANCE PLANTING PLAN  
SCALE 1" = 10'-0"

**2**  
LEARNING CENTER PLANTING PLAN  
SCALE 1" = 10'-0"



CONSULTANTS

STRUCTURAL ENGINEER  
STREIB, PRICE & ASSOCIATES, LTD.  
C/O 1411 EAST MAIN STREET, SUITE 2100  
RICHMOND, VIRGINIA 23222  
T 804-346-3133 F 804-346-1171

ME/P/AN/P ENGINEER  
ENGINEERS PLUS, SUITE 200  
RICHMOND, VIRGINIA 23222  
T 804-301-0845 F 804-301-0846

LANDSCAPE ARCHITECT  
HIGGINS & GERTSMANER  
RICHMOND, VIRGINIA 23226  
T 804-749-7200 F ...



PROJECT NUMBER  
21032

DATE  
November 15, 2013

DRAWN BY: CHECKED BY:

REVISIONS  
NO. DATE DESCRIPTION  
1 12/20/13 REVISION 1

SHEET TITLE

SOUTH ENTRANCE  
PLANTING PLAN

SHEET NUMBER

**L303**

Copyright © 2013, Glavé & Holmes Architecture, Ltd. All rights reserved. This drawing is the property of Glavé & Holmes Architecture, Ltd. and is not to be reproduced or transmitted in any form or by any means, electronic or mechanical, including photocopying, recording, or by any information storage and retrieval system, without the prior written permission of Glavé & Holmes Architecture, Ltd.

GRAPHIC SCALE  
(IN FEET)  
1 inch = 10 ft.



3  
SCALE 1" = 10'  
P.M.  
SOUTH ENTRANCE PLANTING PLAN

