



DEPARTMENT OF  
**PLANNING AND  
DEVELOPMENT  
REVIEW**

# CPCR.2024.021: tobacco, nicotine, and hemp product retail sales



Kevin J. Vonck, Ph.D., Director

TUESDAY, 19 NOVEMBER 2024

# What are we proposing to regulate?

any business or establishment that contains the retail sale of:  
electronic smoking devices and retail tobacco products, as  
such terms are defined in § 18.2-371.2 Code of Virginia;  
hemp products and hemp products intended for smoking, as  
such terms are defined in § 3.2-4112 Code of Virginia  
shall not affect a licensee holding a valid license under § 4.1-  
206.3 Code of Virginia

# Why regulate retail sales of these items?

manufacturers allocate 90% of cigarette advertising and 70% of smokeless tobacco advertising to point-of-sale

adolescents who smoke are at high risk for long-term addiction because their brains are still developing

long-term addiction results in tremendous personal, social, and financial costs of tobacco-related illnesses

the number, density, and proximity to schools of retailers are associated with negative public health outcomes

# How do we define these establishments?

.93:1 *Retail sales of tobacco and hemp* means any business or establishment **where twenty (20) percent or more of the floor area of the premises** contains the retail sale of electronic smoking devices and retail tobacco products, as such terms are defined in § 18.2-371.2 Code of Virginia; or hemp products and hemp products intended for smoking, as such terms are defined in § 3.2-4112 Code of Virginia. This definition shall not apply to a licensee holding a valid license under § 4.1-206.3. Code of Virginia.



# How do we regulate “adult” uses?

only B-4, M-1, and M-2 zoning districts

shall not be situated within one thousand (1,000) feet of

R or RO district;

public or private elementary, intermediate or high school;

church or place of worship;

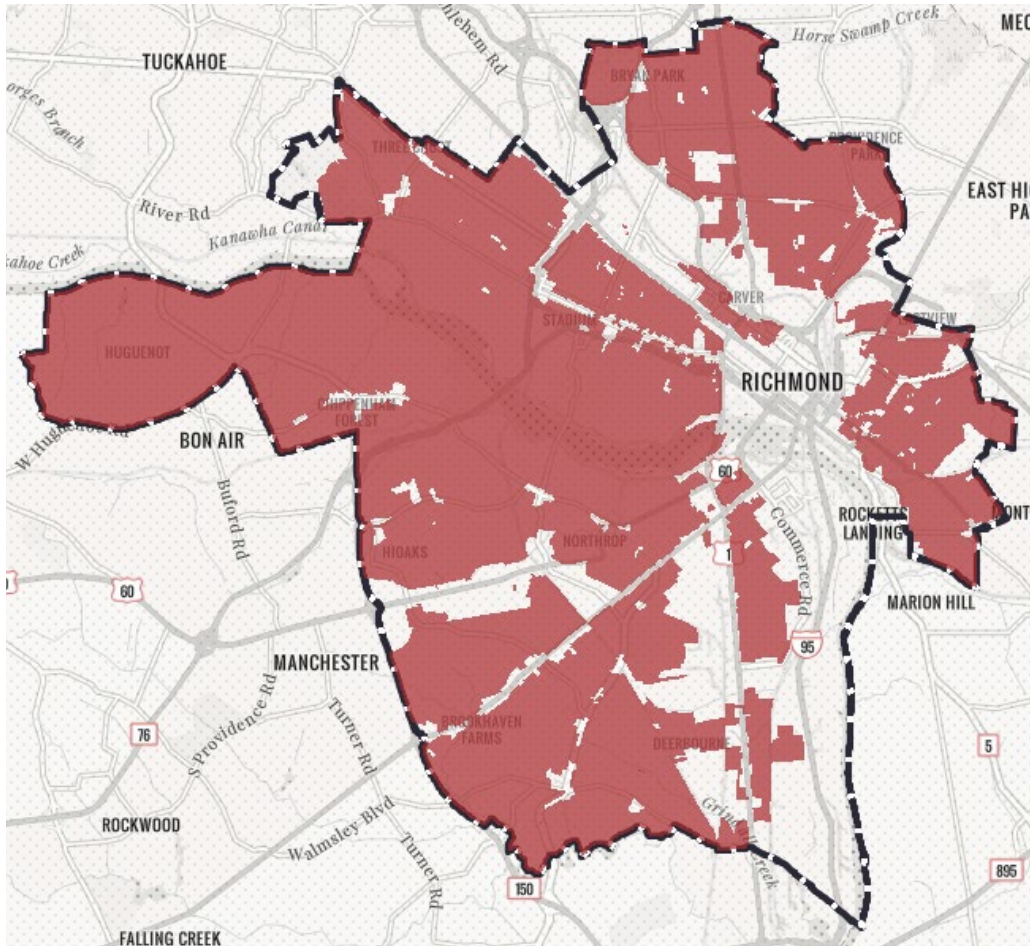
day care center, nursing home, or public library;

hotel, motel, lodginghouse, or tourist home;

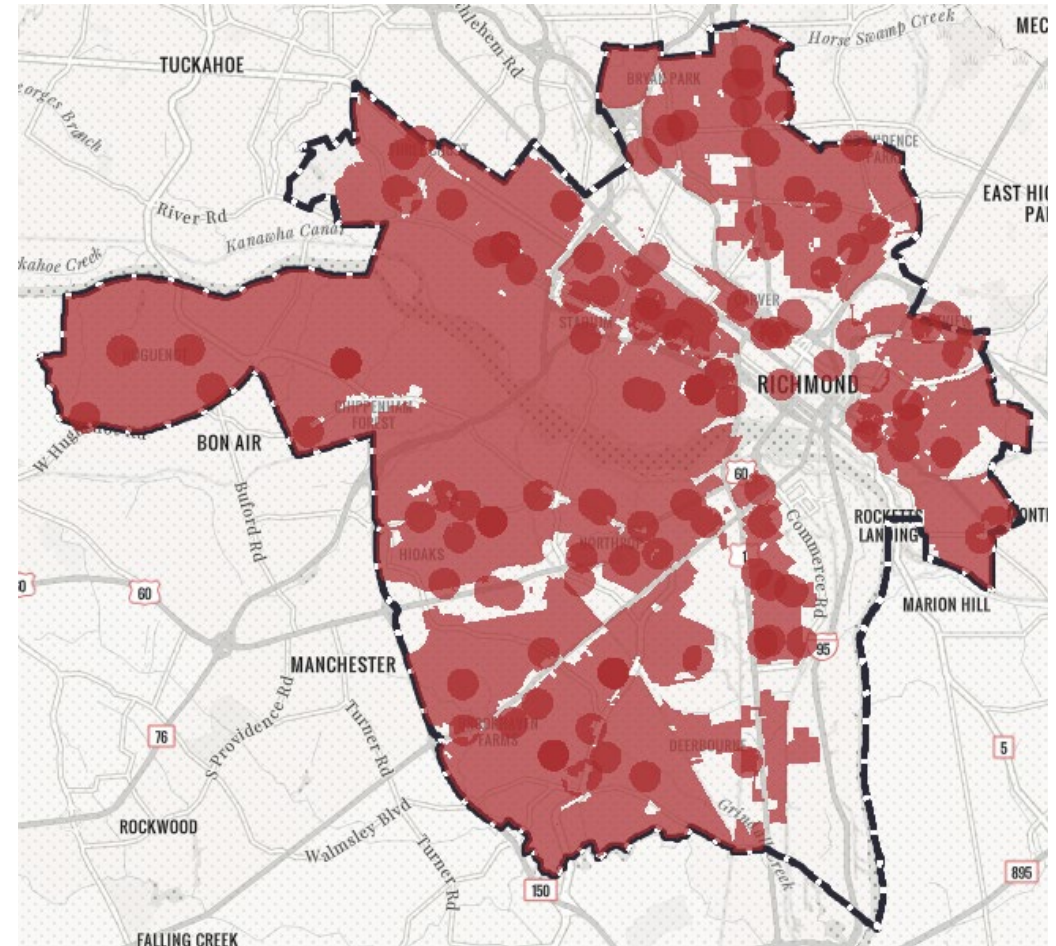
emergency, transitional, or permanent supportive housing; or

other “adult” use

# How do we regulate retail sales of these items?



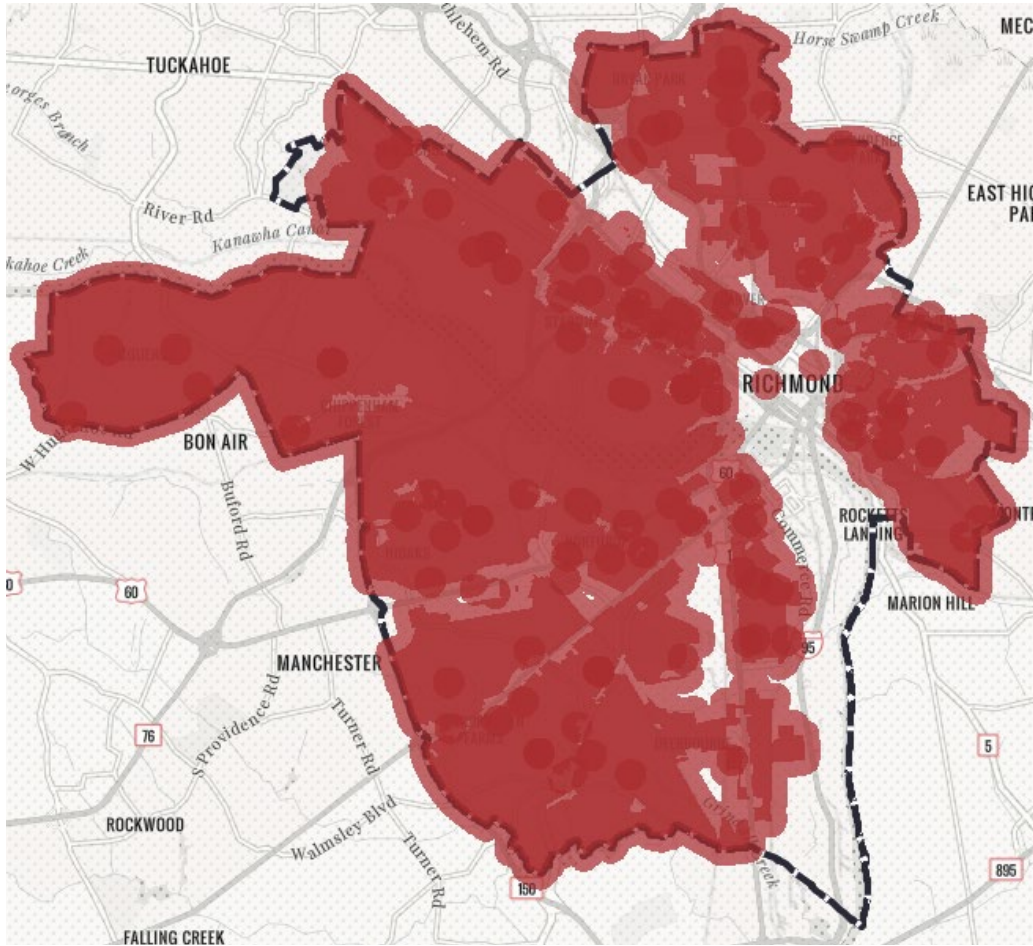
R- Districts



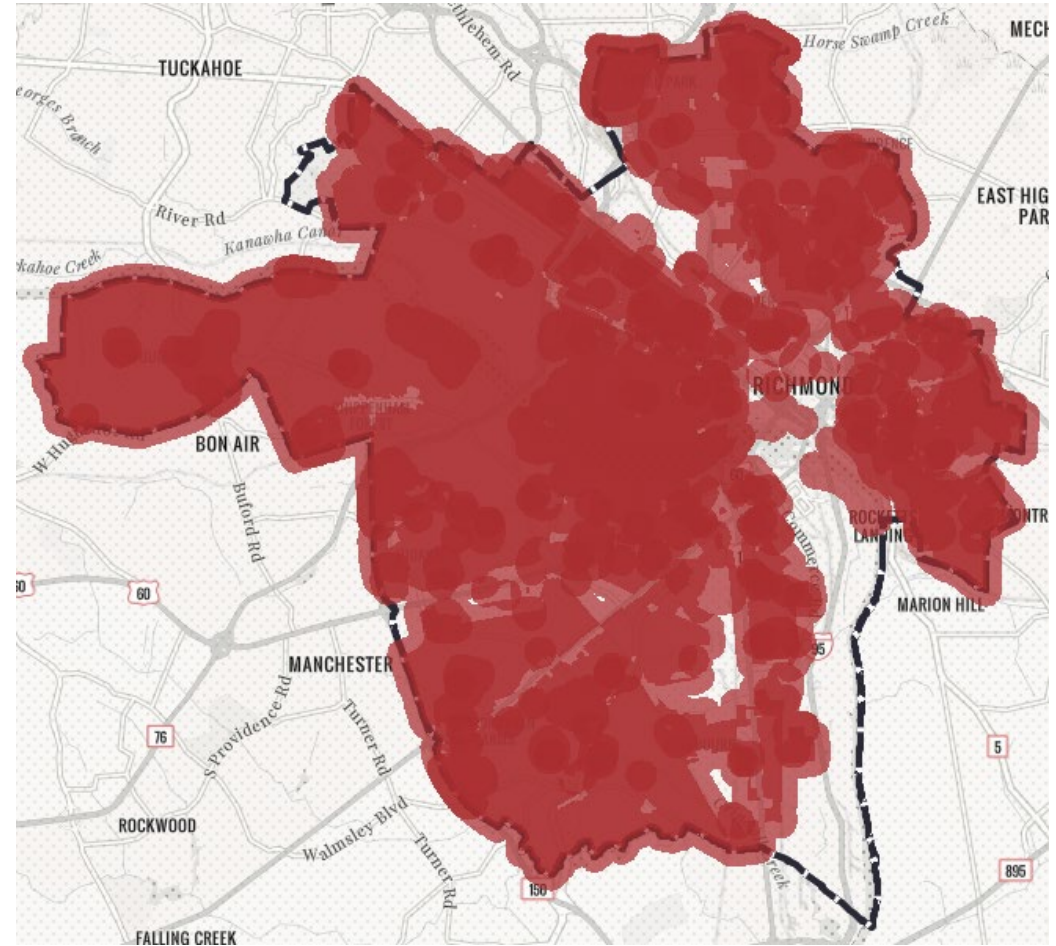
R- Districts + 1,000' buffer around public schools and day centers



# How do we regulate retail sales of these items?



R- Districts, public schools, and day centers + 1,000' buffer



R- Districts, public schools, day centers, and parks + 1,000' buffer

# Questions and discussion