

EXTERIOR BUILDING SIGNAGE

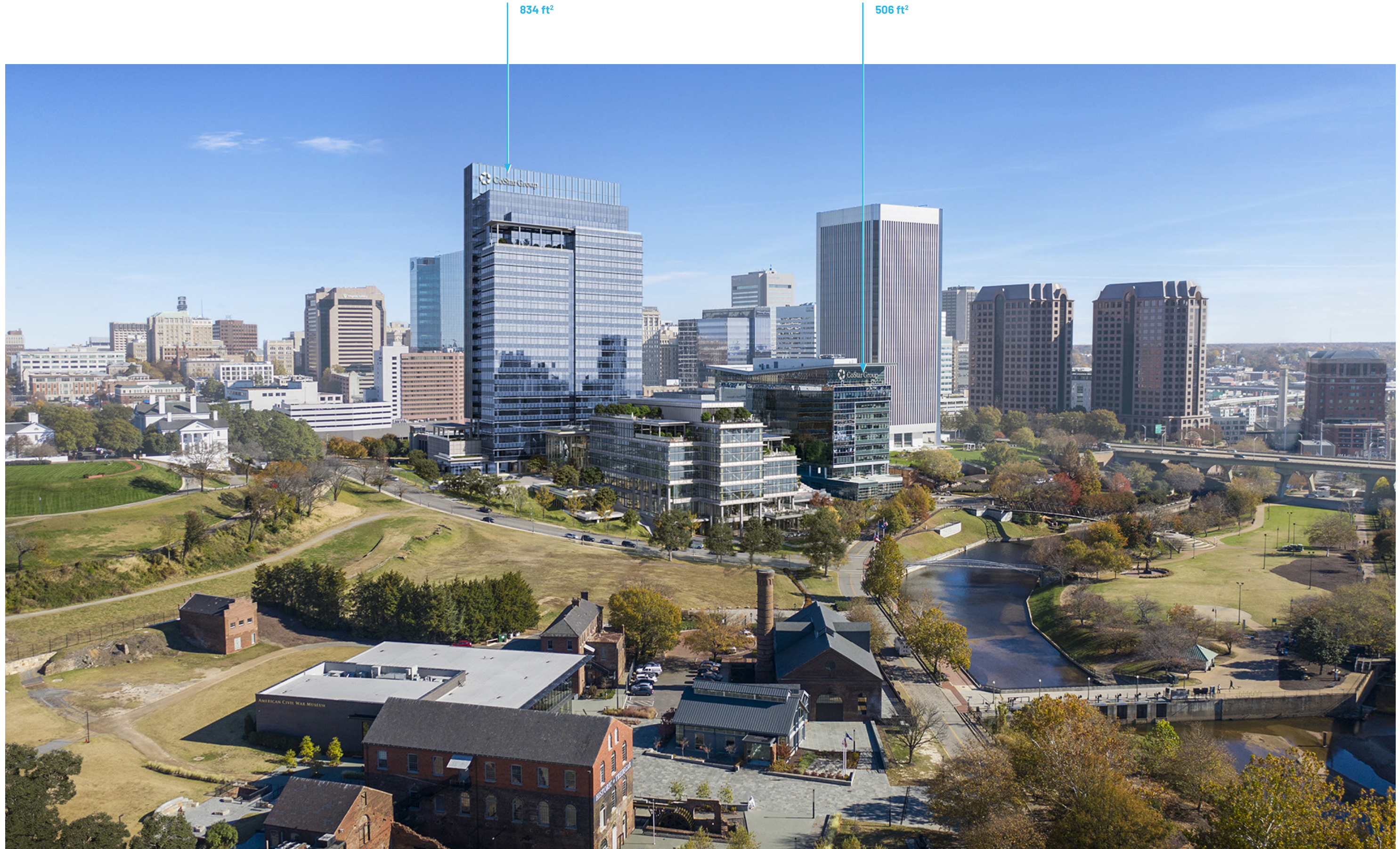
**COSTAR GROUP
RICHMOND CAMPUS**

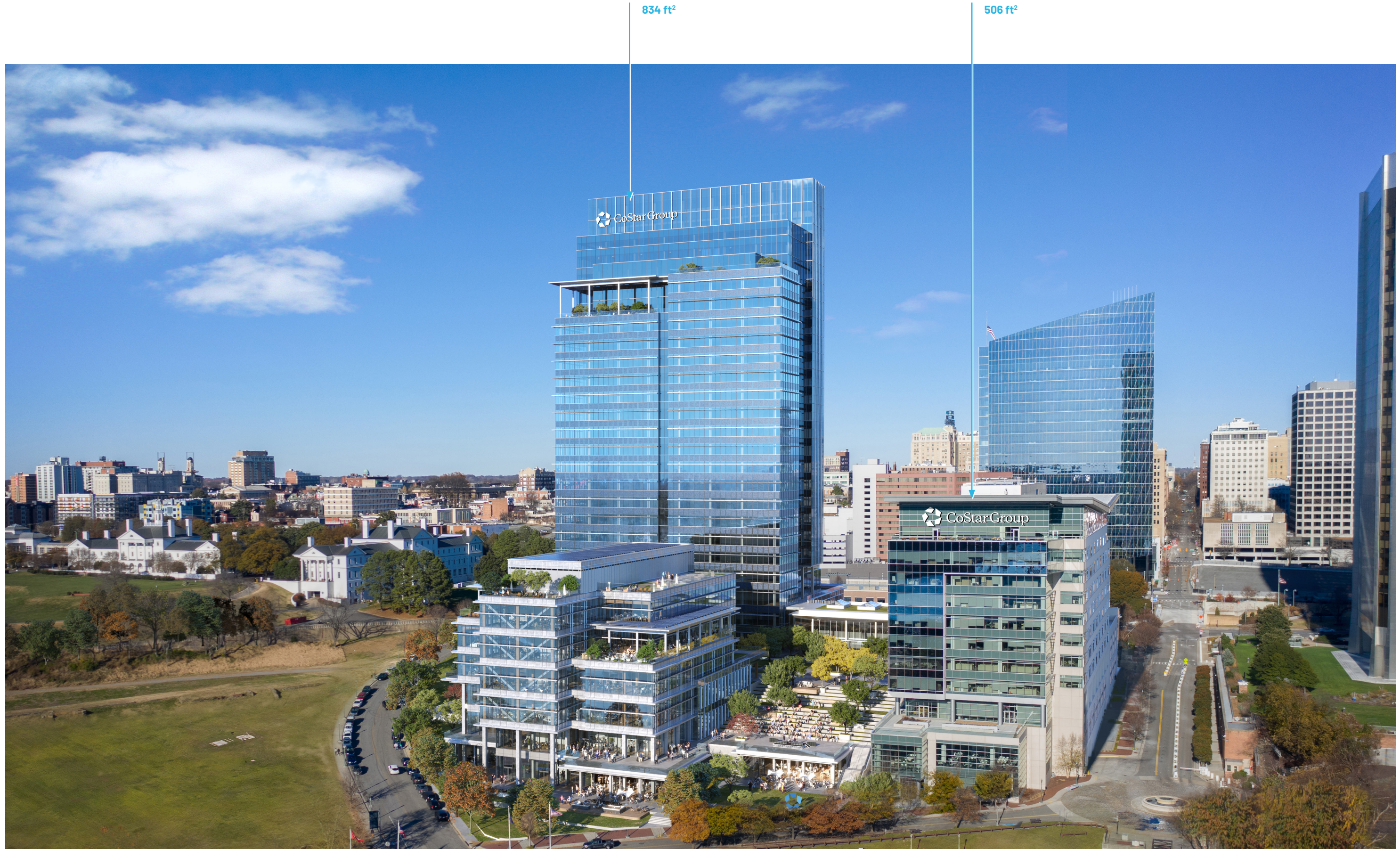
Preferred

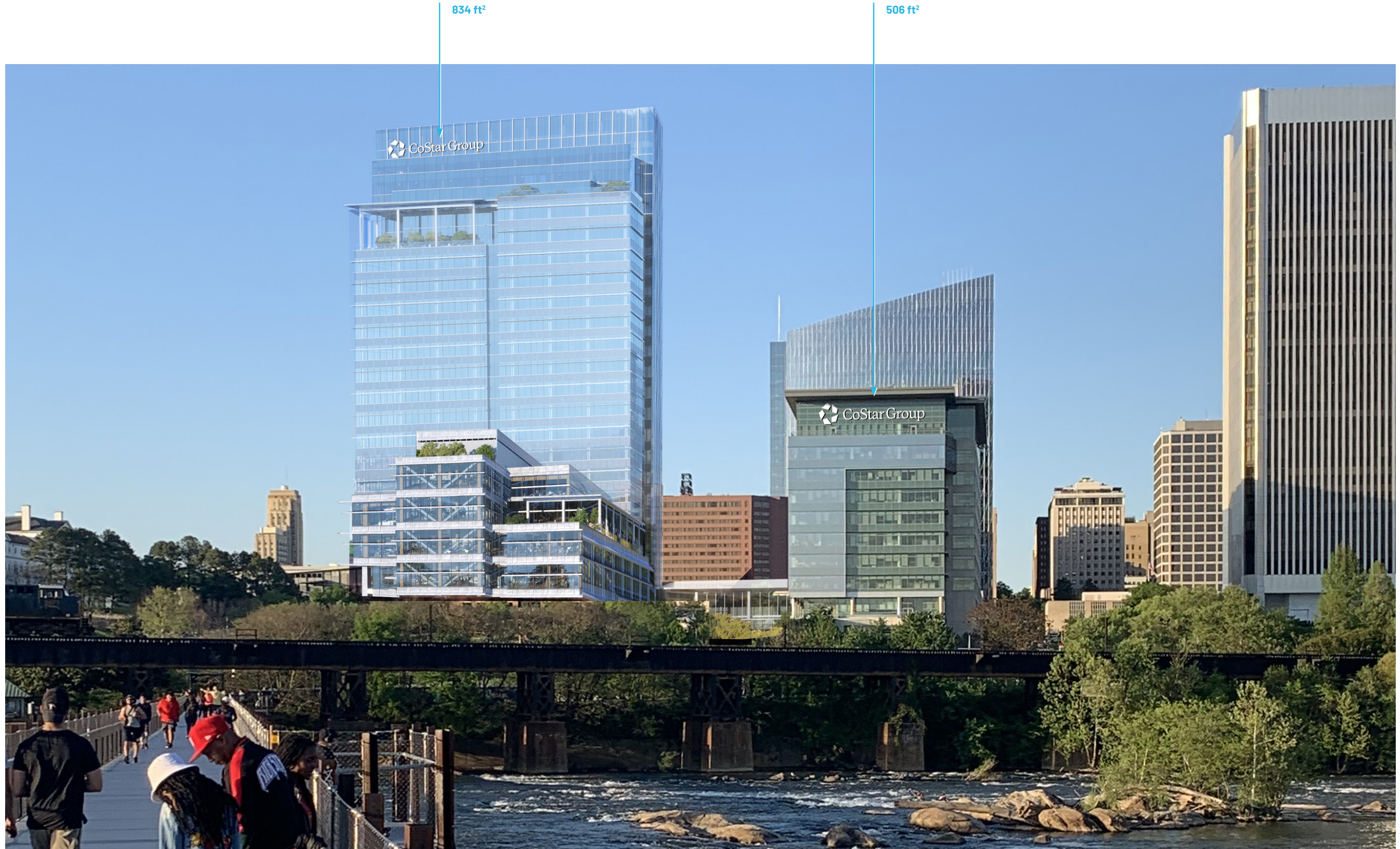
834 ft² @ 2 locations

506 ft² @ 1 location

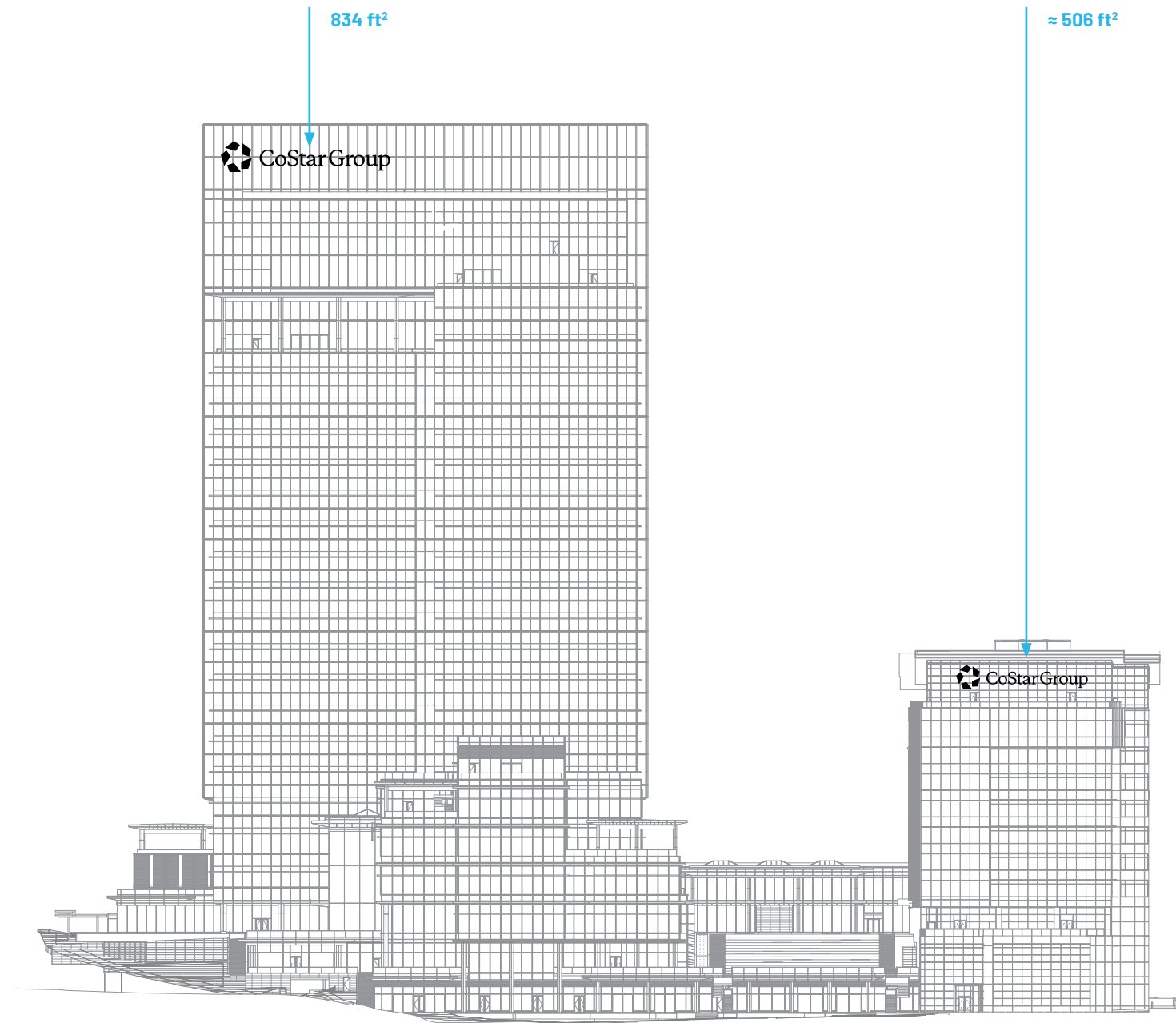
224 ft² @ 1 location



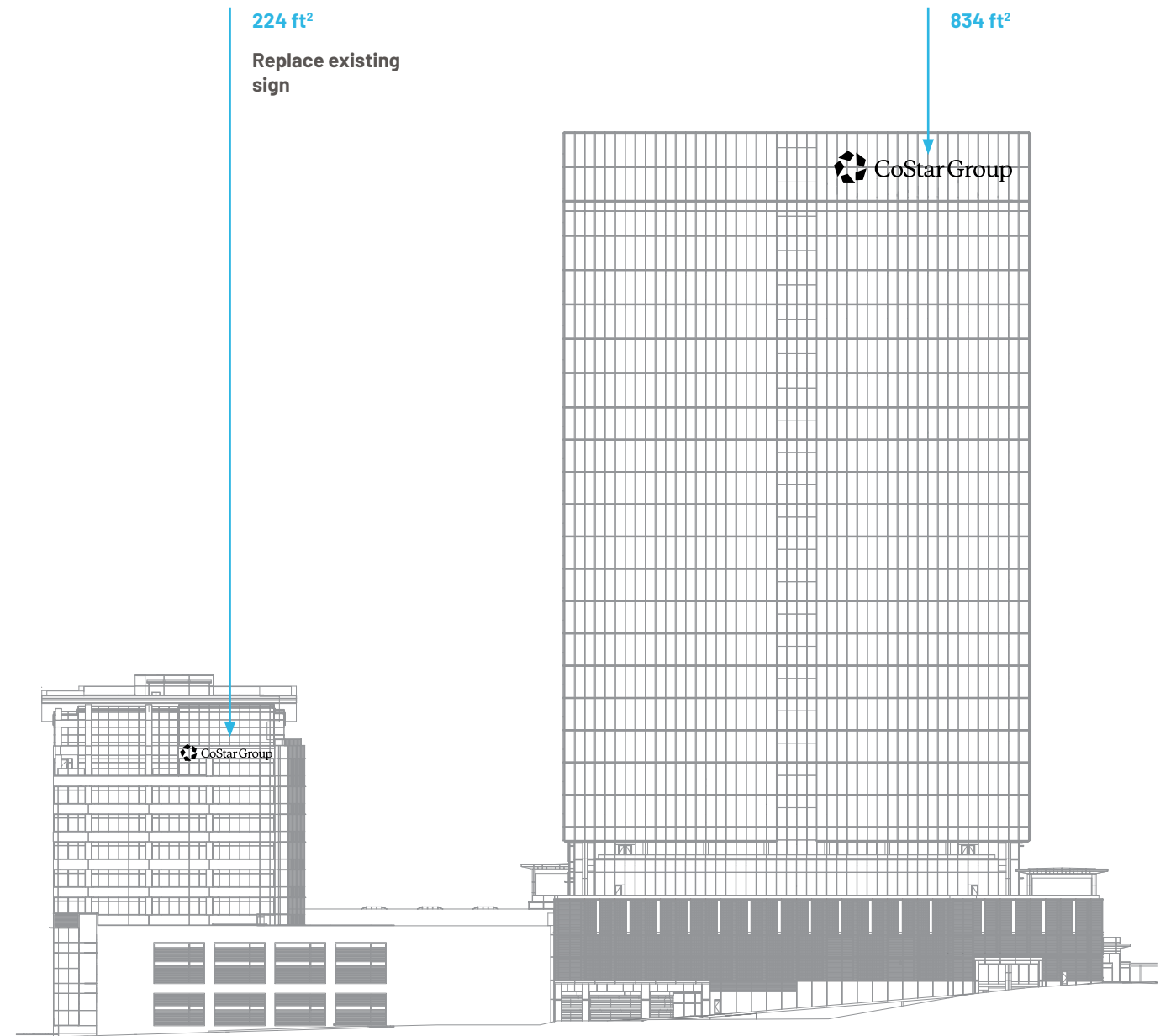








South



North

834 ft²
256 ft² + 578 ft²



2 x total locations
Foundry Park North

506 ft²
155.5 ft² + 350.5 ft²



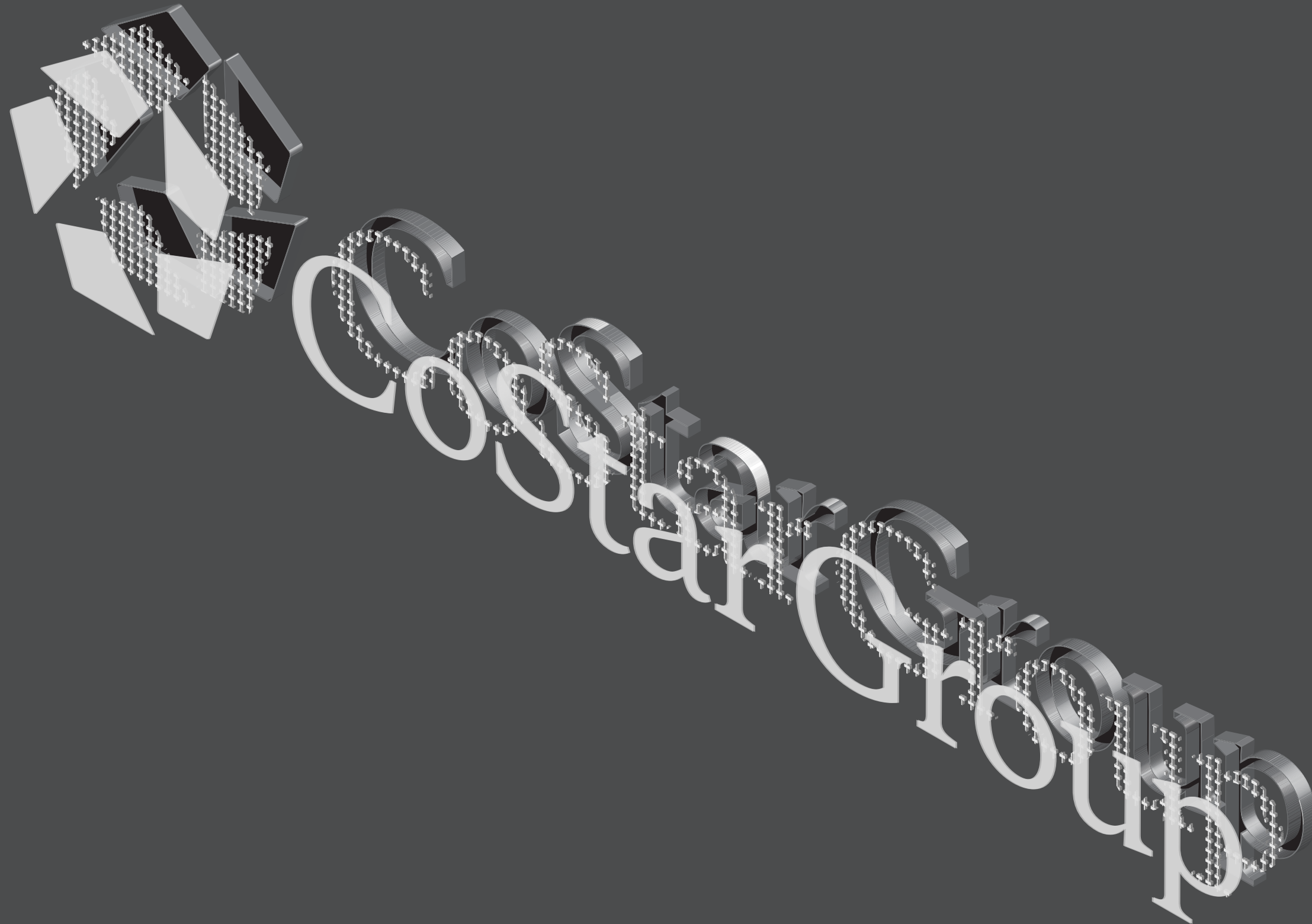
1 x total locations
501 S. 5th Street
(501 Tredegar Street)

224 ft²
70 ft² + 154 ft²



1 x total locations
501 S. 5th Street

Internally illuminated cabinet sign with LED array and diffused lens on sign face.



FEDERAL RESERVE BANK OF RICHMOND
 INST #2005-44874 Site BM
 W0000039001 "X" in SW Corner of DI
 601 E. BYRD STREET Elev.=72.81'

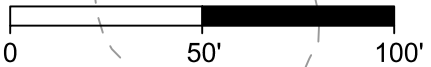
24'± Non-exclusive Ingress/Egress Easement (Inst #05-44873) S53°44'53"E
 270.87'

BRAGG STREET

COSTAR REALTY INFORMATION
 INC.
 W0000043002
 501 S. 5TH STREET
 3.155 ACRES

RMA

SCALE 1"=50'



- NOTES:
- NO WETLANDS OR STREAMS ON SITE
 - DISTANCE TO PUBLIC STREET = 0FT
 - 100 YEAR FLOOD PLAIN NOT LOCATED WITHIN PROPERTY LIMITS

LIMITS OF SURVEY

R=23.26'
 L=19.43'

R=70.00'
 L=52.44'

R=50.00'
 L=46.36'

PROPERTY BOUNDARY

IDA

212.21'
 N85°24'15"W
 UGR PUBLIC RIGHT OF WAY (PER CITY BASELINE SHEETS)

TREDEGAR STREET

500 YEAR FLOOD PLAIN

100 YEAR FLOOD PLAIN WITH FEMA
 MAP 5101290037D EFFECTIVE 4/2/2009

TIMMONS GROUP

YOUR VISION ACHIEVED THROUGH OURS.

THIS DRAWING PREPARED AT THE
CORPORATE OFFICE
 1001 Boulders Parkway, Suite 300 | Richmond, VA 23225
 TEL 804.200.6500 FAX 804.560.1016 www.timmons.com

COSTAR

CITY OF RICHMOND, VIRGINIA

SUP PLAT EXHIBIT - 501 S 5TH ST

SCALE 1" = 50'
 CHECKED BY
 DESIGNED BY
 DRAWN BY

DATE	REVISION DESCRIPTION
02/01/23	

SHEET NO.
 40364
 OF 80

These plans and associated documents are the exclusive property of TIMMONS GROUP and may not be reproduced in whole or in part and shall not be used for any purpose whatsoever, inclusive, but not limited to construction, bidding, and/or construction staking without the express written consent of TIMMONS GROUP.