

OVERBROOK ROAD SITE PLAN

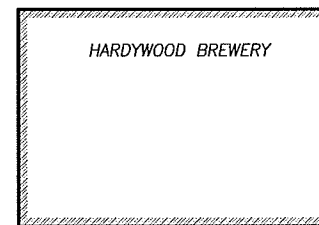
0 20' 50' 100'



NOTES:

- POOL COMPLEX SHALL BE RELOCATABLE ALONG LENGTH OF BUILDING.
- TABULATION OF PROJECT DATA OF OVERBROOK LOFTS LOCATED ON 6.441 ACRES

OVERBROOK WEST	OVERBROOK EAST
81 ONE BEDROOM APTS	124 TWO BEDROOM APTS
TOTALS	TOTALS
58,866 SF NET RENTABLE	120,032 SF NET RENTABLE
66,490 SF GROSS	122,292 SF GROSS
- ALL SQUARE FOOTAGES ARE APPROXIMATE
- TOTAL PARKING SPACES SHOWN = 282
- PAVALION / UTILITY BUILDING SIZE SHALL BE OPTIONAL.



BUILDING SITE DATA	
TOTAL BUILDING FOOTPRINT	113,993 SF 2.62 ACRES
TOTAL LAND AREA:	280,608 SF 6.44 ACRES
OPEN SPACE ON SITE:	67,997 SF 1.56 ACRES
RATIO OPEN AREA TO SITE	1 : 4.127 24.23 %



© SWA ARCHITECTS-VA, INC. MATERIAL INCLUDED HEREON IS COVERED BY COPYRIGHT. USE OF THIS WORK IN WHOLE OR IN PART IS FORBIDDEN WITHOUT THE EXPRESSED WRITTEN CONSENT OF SWA ARCHITECTS.

PROJECT NO:
Overbrook Lofts

PROJECT MGR:
DA

DATE:
10/06/14

OVERBROOK LOFTS

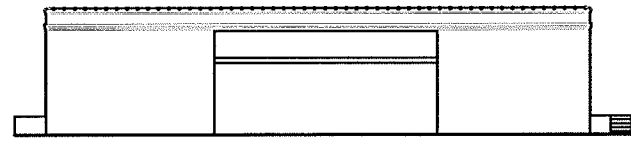
Overbrook and Hermitage Roads
Richmond, Virginia

TITLE:

Proposed
Site Plan

S1.01

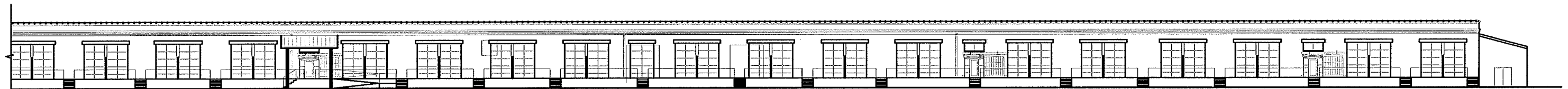
VA Coordinate System 1983
South Zone



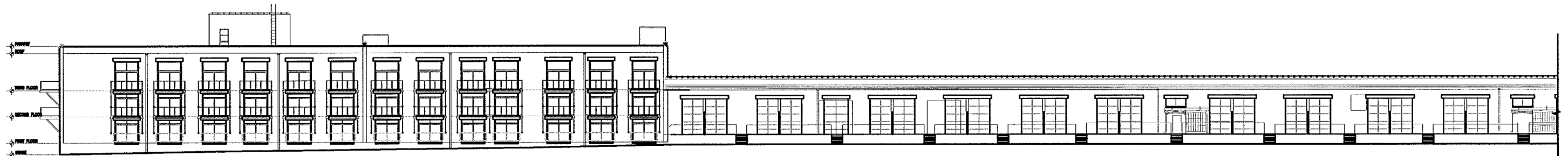
EAST ELEVATION



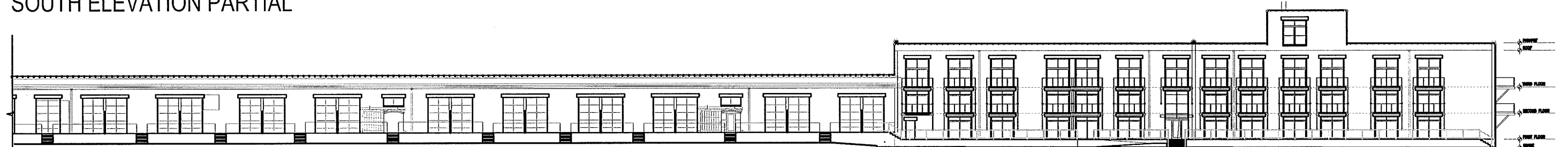
WEST ELEVATION



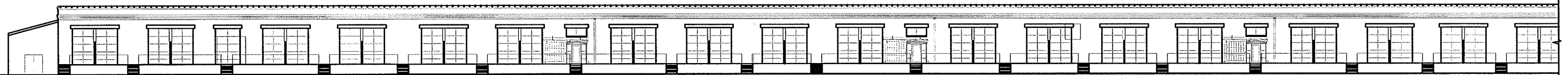
SOUTH ELEVATION PARTIAL



SOUTH ELEVATION PARTIAL



NORTH ELEVATION PARTIAL



NORTH ELEVATION PARTIAL



© SWA ARCHITECTS-VA, INC. MATERIAL INCLUDED HEREON IS COVERED BY COPYRIGHT. USE OF THIS WORK IN WHOLE OR IN PART IS FORBIDDEN WITHOUT THE EXPRESSED WRITTEN CONSENT OF SWA ARCHITECTS.

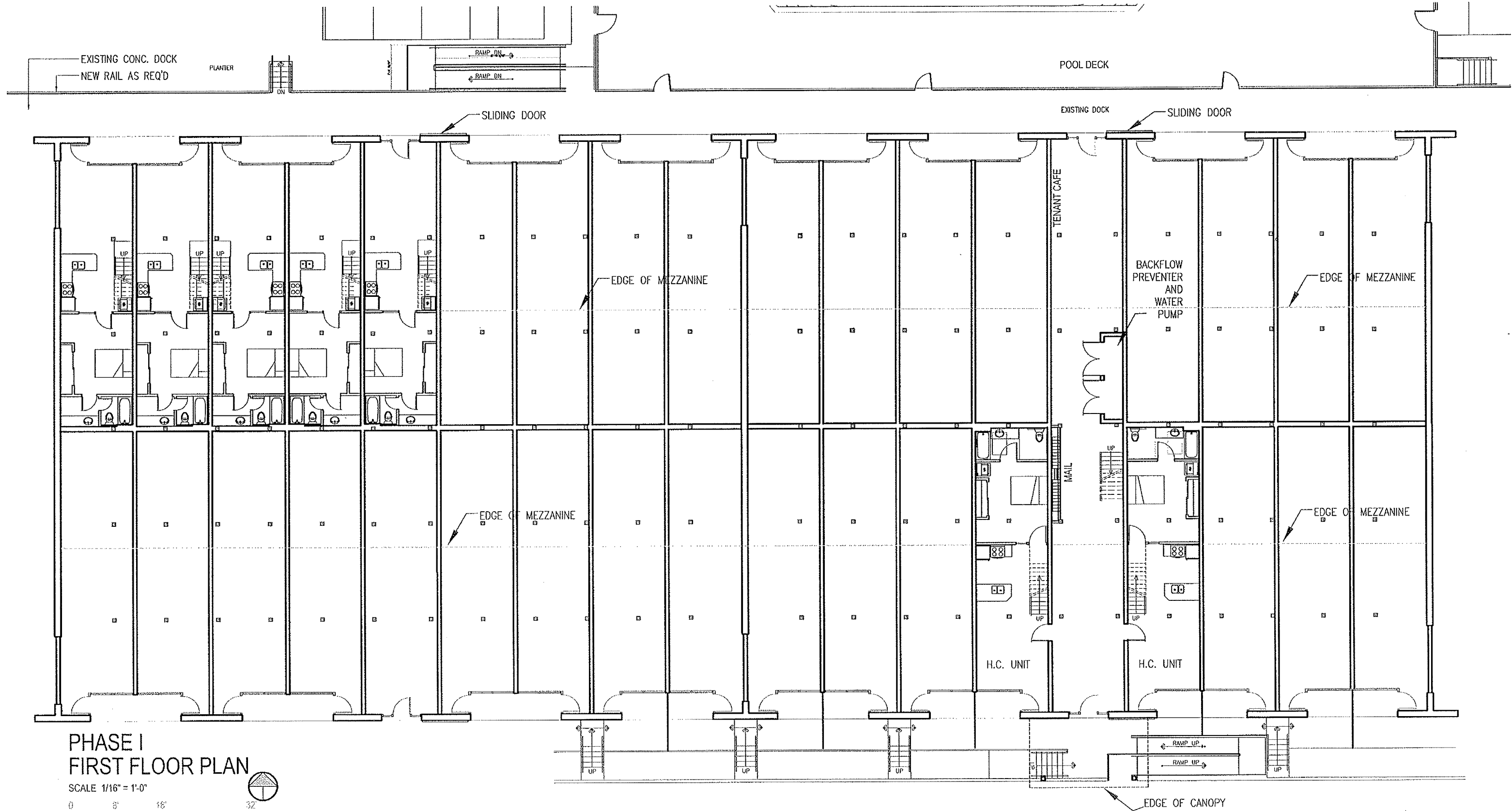
PROJECT NO:
Overbrook Lofts

PROJECT MGR:
KM
DATE:
04/01/14
REVISED 09/25/14

OVERBROOK LOFTS
Overbrook and Hermitage Roads
Richmond, Virginia

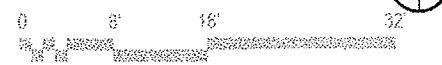
TITLE:
PROPOSED
Elevations

Section A
A2.01



PHASE I
FIRST FLOOR PLAN

SCALE 1/16" = 1'-0"



swa Architects-VA, Inc.
1553 E. Main Street Richmond, Va 23219

© SWA ARCHITECTS-VA, INC. MATERIAL INCLUDED HEREON IS COVERED BY COPYRIGHT. USE OF THIS WORK IN WHOLE OR IN PART IS FORBIDDEN WITHOUT THE EXPRESSED WRITTEN CONSENT OF SWA ARCHITECTS.

PROJECT NO:
Overbrook Lofts

PROJECT MGR:
KM

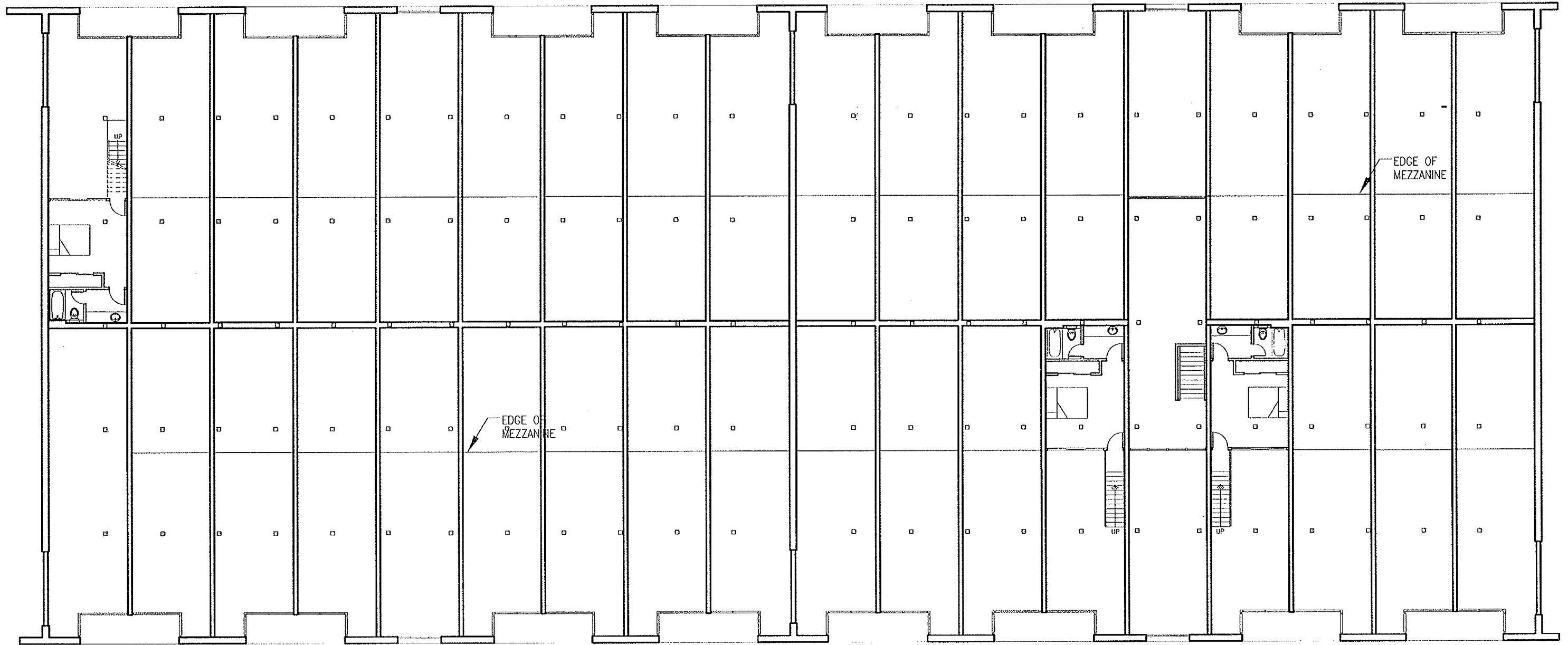
DATE:
04/01/14
REVISED 09/25/14

OVERBROOK EAST

Overbrook and Hermitage Roads
Richmond, Virginia

TITLE: First Floor Section A
Plan

A1.01



PHASE I
MEZZANINE PLAN

SCALE 1/16" = 1'-0"



swa
swa Architects-VA, Inc.
1553 E. Main Street Richmond, Va 23219

© SWA ARCHITECTS-VA, INC. MATERIAL INCLUDED
HEREON IS COVERED BY COPYRIGHT. USE OF
THIS WORK IN WHOLE OR IN PART IS FORBID-
DEN WITHOUT THE EXPRESSED WRITTEN CON-
SENT OF SWA ARCHITECTS.

PROJECT MGR:
KM

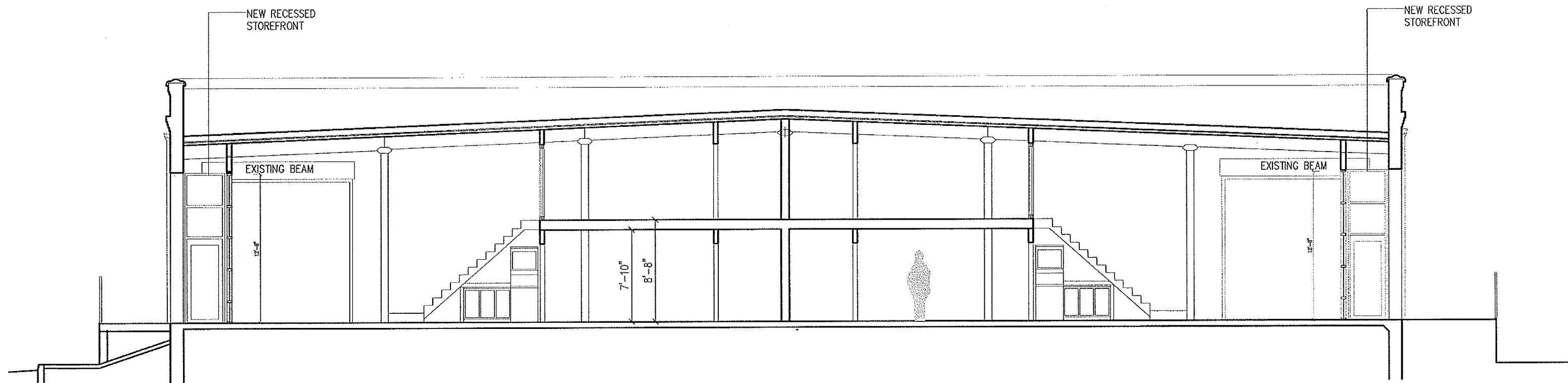
DATE:
04/01/14
REVISED 9/25/14

OVERBROOK EAST
Overbrook and Hermitage Roads
Richmond, Virginia

TITLE: Mezzanine Plan **Section A**

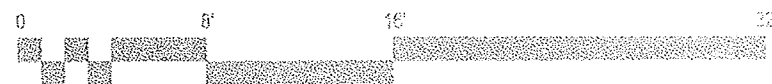
A1.02

PROJECT NO:
Overbrook Lofts



PHASE I
BUILDING SECTION

SCALE 1/8" = 1'-0"



© SWA ARCHITECTS-VA, INC. MATERIAL INCLUDED
HEREON IS COVERED BY COPYRIGHT. USE OF
THIS WORK IN WHOLE OR IN PART IS FORBID-
DEN WITHOUT THE EXPRESSED WRITTEN CON-
SENT OF SWA ARCHITECTS.

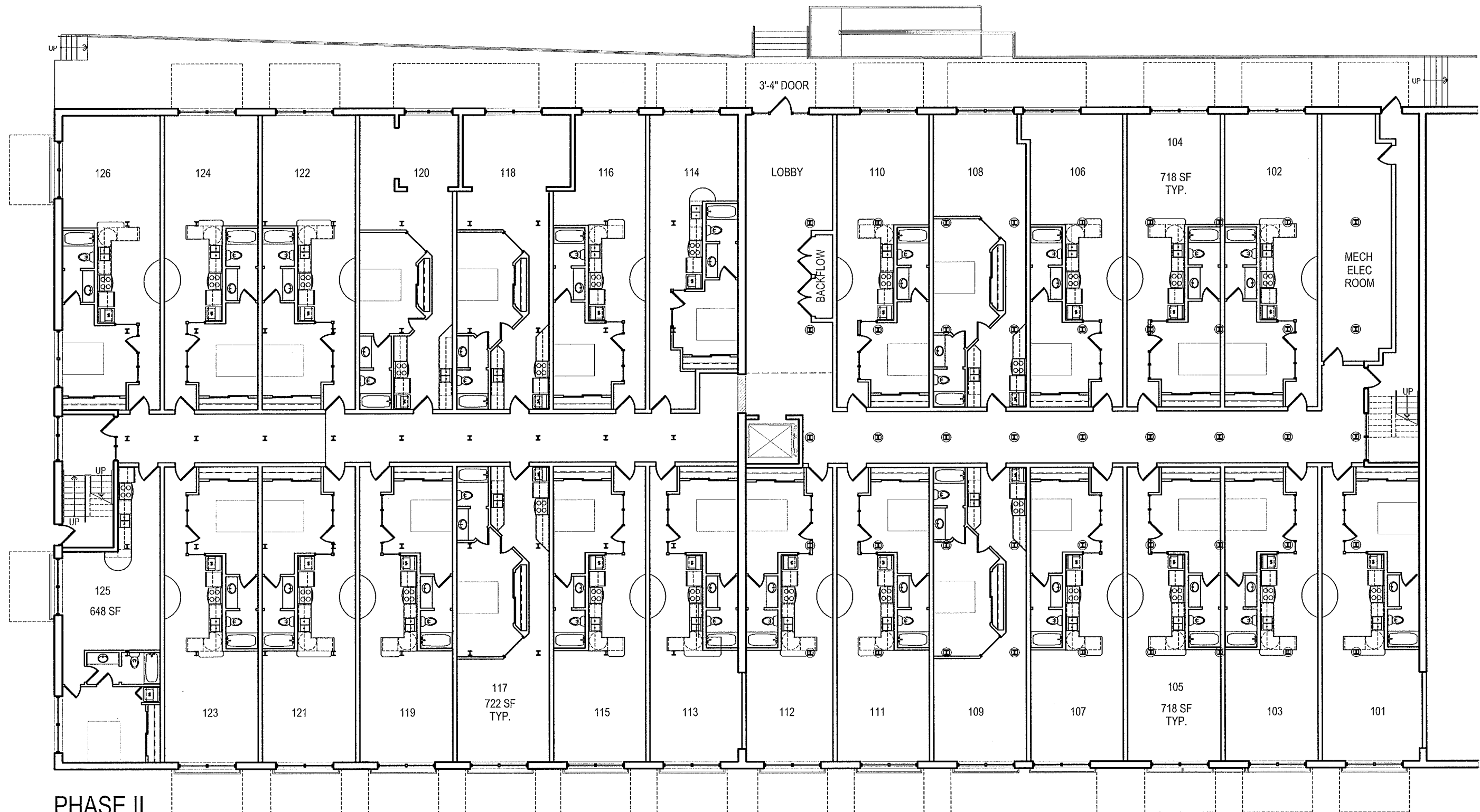
PROJECT NO:
Overbrook Lofts

PROJECT MGR:
KM
DATE:
01/30/14

REVISED 09/25/14

OVERBROOK EAST
Overbrook and Hermitage Roads
Richmond, Virginia

TITLE: Building Section **Section A**
A3.01



**PHASE II
FIRST FLOOR PLAN**

SCALE 1/16" = 1'-0"



swa Architects-VA, Inc.
1553 E. Main Street Richmond, Va 23219

© SWA ARCHITECTS-VA, INC. MATERIAL INCLUDED
HEREON IS COVERED BY COPYRIGHT. USE OF
THIS WORK IN WHOLE OR IN PART IS FORBID-
DEN WITHOUT THE EXPRESSED WRITTEN CON-
SENT OF SWA ARCHITECTS.

PROJECT NO:
Overbrook Lofts

PROJECT MGR:
DA

DATE:
10/06/14

OVERBROOK WEST

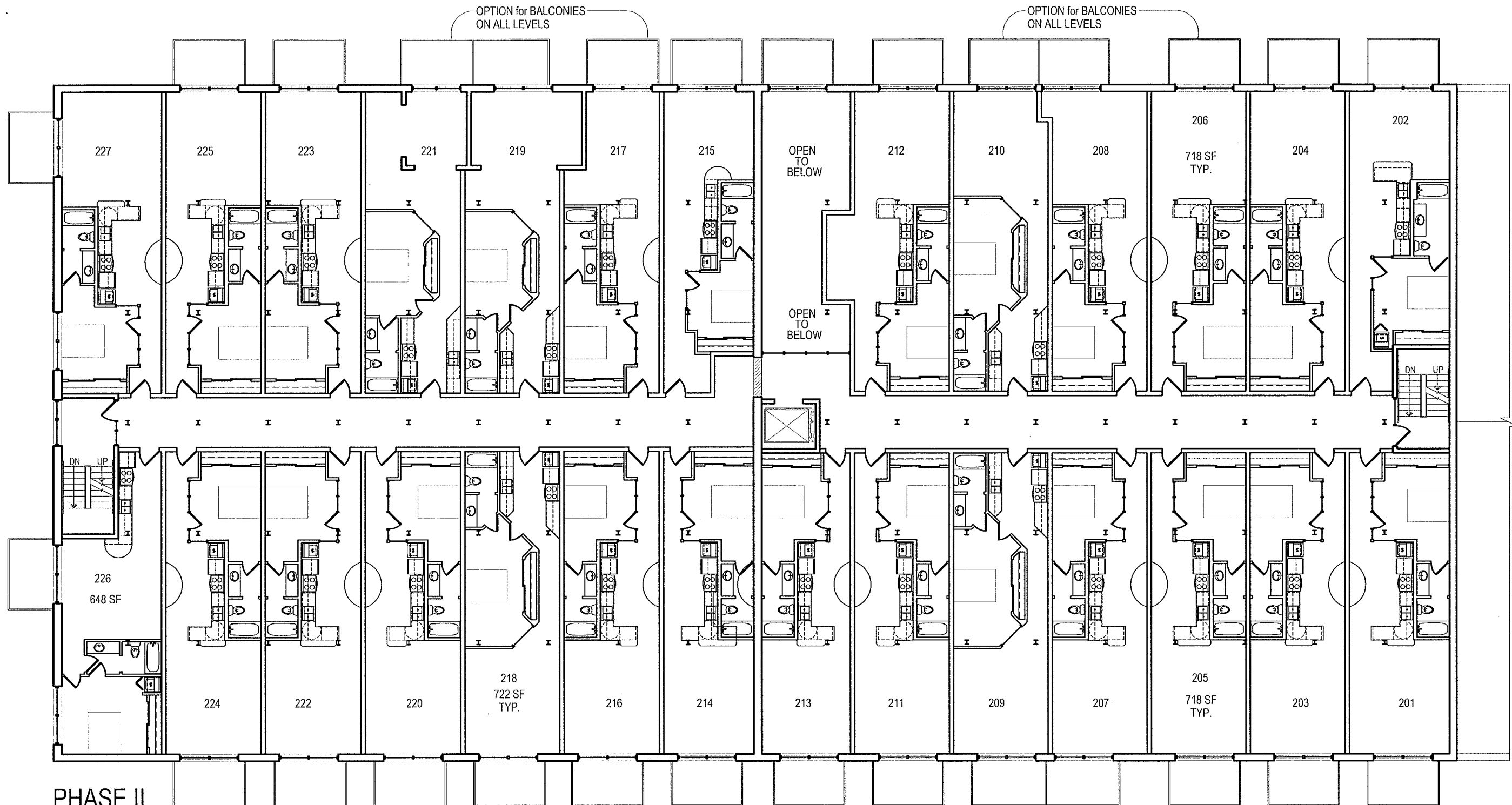
Overbrook and Hermitage Roads
Richmond, Virginia

TITLE:

Proposed
First Floor
Plan

Section B

A1.01



**PHASE II
SECOND FLOOR PLAN**

SCALE 1/16" = 1'-0"
 0 8' 16' 32'



swa Architects-VA, Inc.
 1553 E. Main Street Richmond, Va 23219

© SWA ARCHITECTS-VA, INC. MATERIAL INCLUDED
 HEREON IS COVERED BY COPYRIGHT. USE OF
 THIS WORK IN WHOLE OR IN PART IS FORBID-
 DEN WITHOUT THE EXPRESSED WRITTEN CON-
 SENT OF SWA ARCHITECTS.

PROJECT NO:
 Overbrook Lofts

PROJECT MGR:
 DA

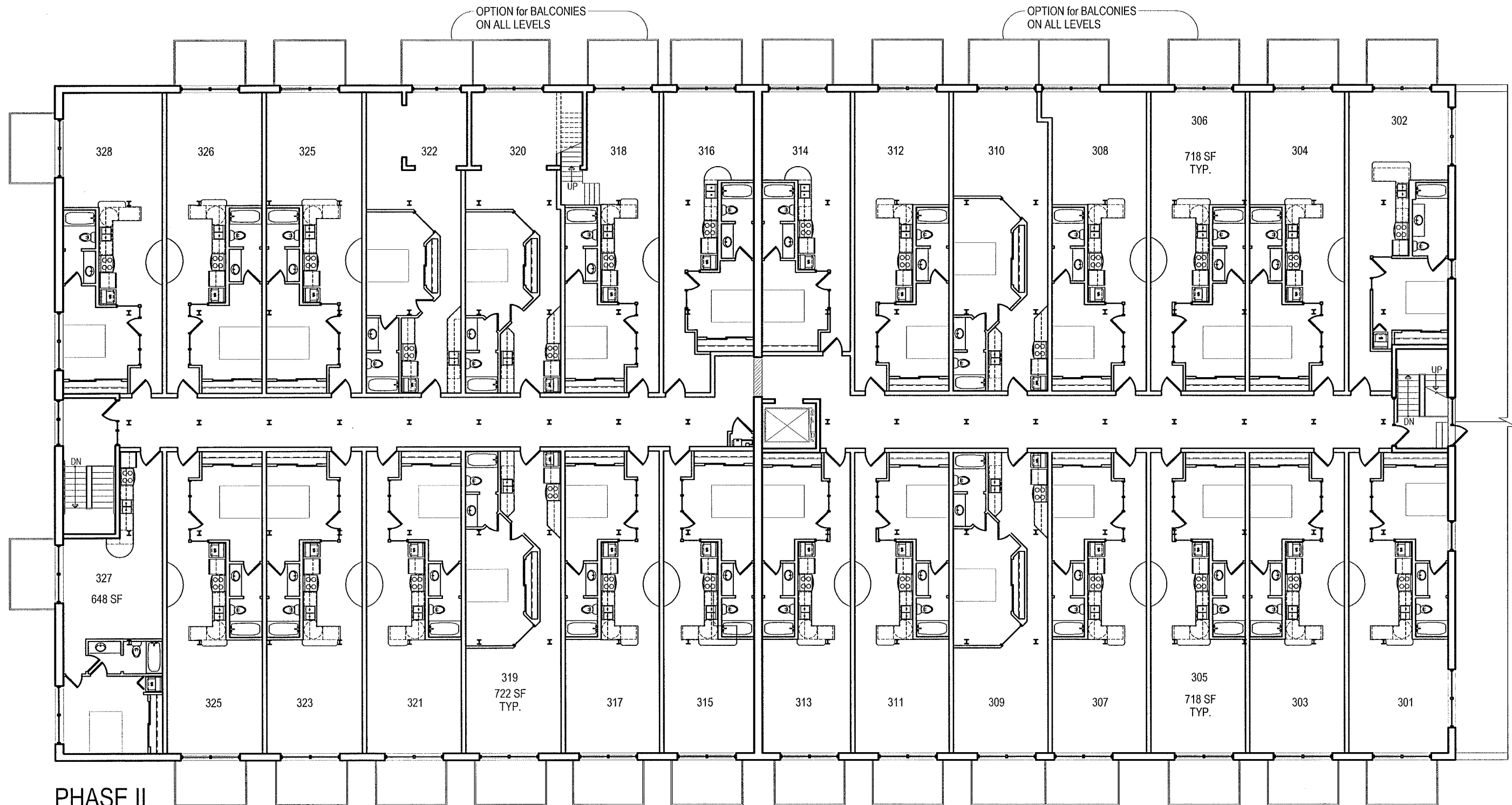
DATE:
 10/06/14

OVERBROOK WEST

Overbrook and Hermitage Roads
 Richmond, Virginia

TITLE:
 Proposed
 Second Floor
 Plan

Section B
A1.02



**PHASE II
THIRD FLOOR PLAN**

SCALE 1/16" = 1'-0"



swa Architects-VA, Inc.
1553 E. Main Street Richmond, Va 23219

© SWA ARCHITECTS-VA, INC. MATERIAL INCLUDED HEREON IS COVERED BY COPYRIGHT. USE OF THIS WORK IN WHOLE OR IN PART IS FORBIDDEN WITHOUT THE EXPRESSED WRITTEN CONSENT OF SWA ARCHITECTS.

PROJECT NO:
Overbrook Lofts

PROJECT MGR:
DA

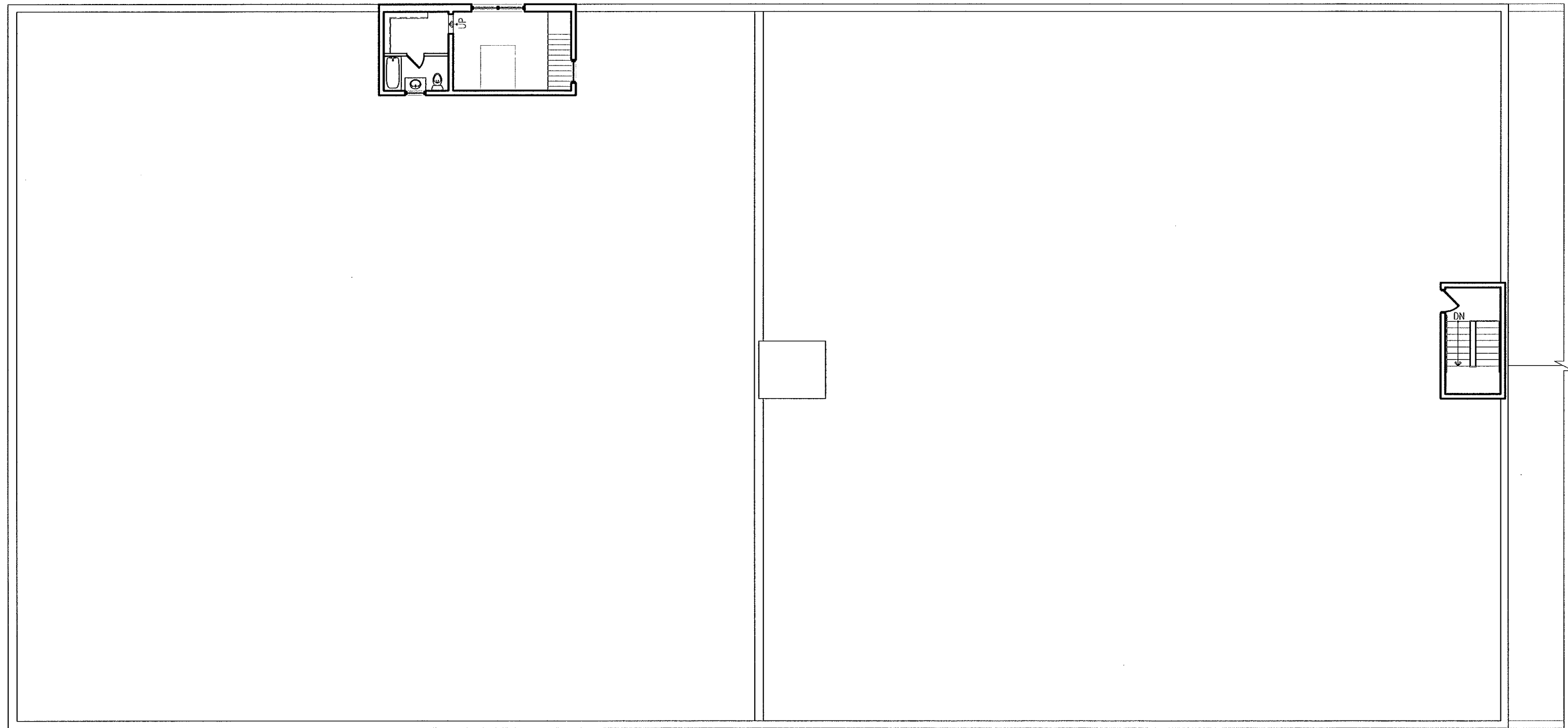
DATE:
10/06/14

OVERBROOK WEST

Overbrook and Hermitage Roads
Richmond, Virginia

TITLE:
Proposed
Third Floor
Plan

Section B
A1.03



PHASE II
ROOF PLAN

SCALE 1/16" = 1'-0"



swa Architects-VA, Inc.
1553 E. Main Street Richmond, Va 23219

© SWA ARCHITECTS-VA, INC. MATERIAL INCLUDED
HEREON IS COVERED BY COPYRIGHT. USE OF
THIS WORK IN WHOLE OR IN PART IS FORBID-
DEN WITHOUT THE EXPRESSED WRITTEN CON-
SENT OF SWA ARCHITECTS.

PROJECT NO:
Overbrook Lofts

PROJECT MGR:
DA

DATE:
10/06/14

OVERBROOK WEST

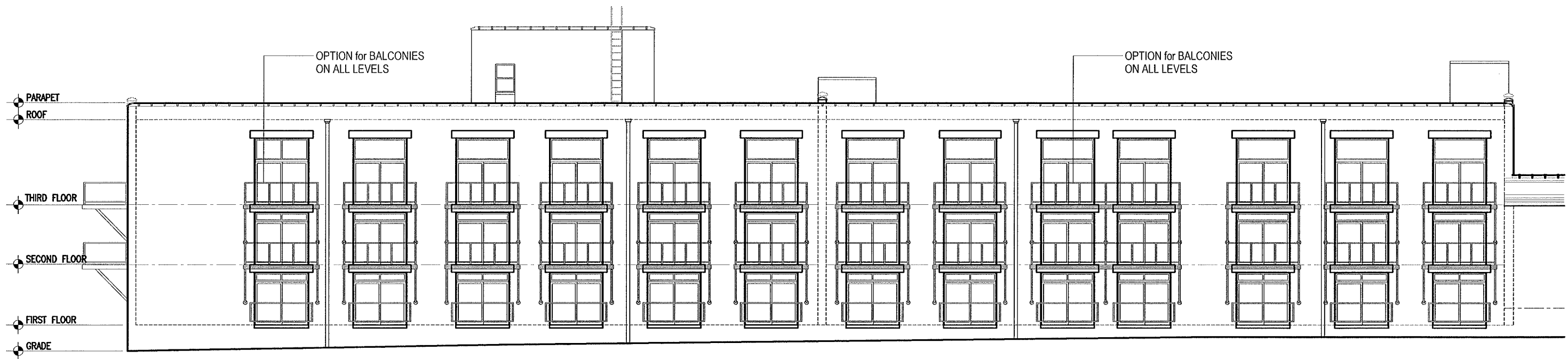
Overbrook and Hermitage Roads
Richmond, Virginia

TITLE:

Proposed
Roof
Plan

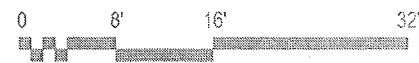
Section B

A1.04



PHASE II
SOUTH ELEVATION

SCALE 1/16" = 1'-0"



swa Architects-VA, Inc.
1553 E. Main Street Richmond, Va 23219

© SWA ARCHITECTS-VA, INC. MATERIAL INCLUDED HEREON IS COVERED BY COPYRIGHT. USE OF THIS WORK IN WHOLE OR IN PART IS FORBIDDEN WITHOUT THE EXPRESSED WRITTEN CONSENT OF SWA ARCHITECTS.

PROJECT NO:
Overbrook Lofts

PROJECT MGR:
DA

DATE:
10/06/14

OVERBROOK WEST

Overbrook and Hermitage Roads
Richmond, Virginia

TITLE:

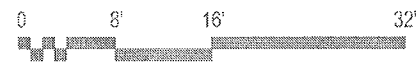
Proposed
South
Elevation

Section B
A2.01



PHASE II
WEST ELEVATION

SCALE 1/16" = 1'-0"



swa Architects-VA, Inc.
1553 E. Main Street Richmond, Va 23219

© SWA ARCHITECTS-VA, INC. MATERIAL INCLUDED
HEREON IS COVERED BY COPYRIGHT. USE OF
THIS WORK IN WHOLE OR IN PART IS FORBID-
DEN WITHOUT THE EXPRESSED WRITTEN CON-
SENT OF SWA ARCHITECTS.

PROJECT NO:
Overbrook Lofts

PROJECT MGR:
DA

DATE:
10/06/14

OVERBROOK WEST

Overbrook and Hermitage Roads
Richmond, Virginia

TITLE:

Proposed
West
Elevation

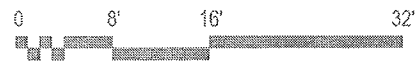
Section B

A2.02



PHASE II
NORTH ELEVATION

SCALE 1/16" = 1'-0"



swa Architects-VA, Inc.
1553 E. Main Street Richmond, Va 23219

© SWA ARCHITECTS-VA, INC. MATERIAL INCLUDED HEREON IS COVERED BY COPYRIGHT. USE OF THIS WORK IN WHOLE OR IN PART IS FORBIDDEN WITHOUT THE EXPRESSED WRITTEN CONSENT OF SWA ARCHITECTS.

PROJECT NO:
Overbrook Lofts

PROJECT MGR:
MS

DATE:
10/06/14

OVERBROOK WEST

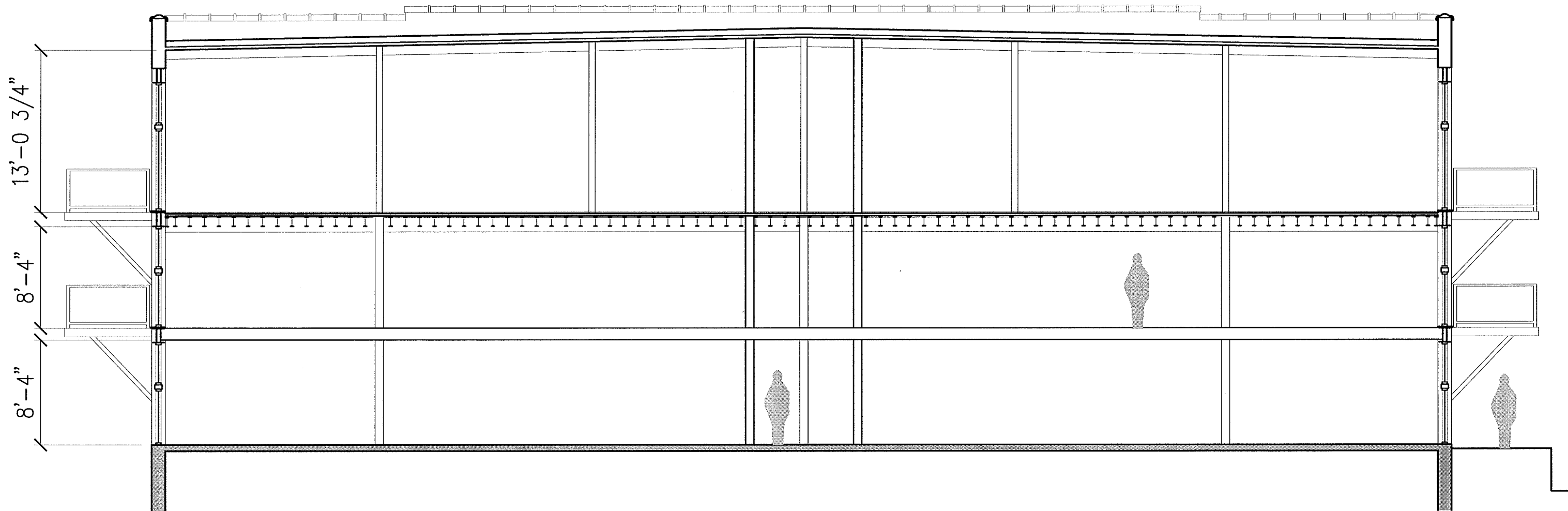
Overbrook and Hermitage Roads
Richmond, Virginia

TITLE:

Proposed
North
Elevation

Section B

A2.03



PHASE II
BUILDING SECTION

SCALE 1/8" = 1'-0"



swa Architects-VA, Inc.
1553 E. Main Street Richmond, Va 23219

© SWA ARCHITECTS-VA, INC. MATERIAL INCLUDED
HEREON IS COVERED BY COPYRIGHT. USE OF
THIS WORK IN WHOLE OR IN PART IS FORBID-
DEN WITHOUT THE EXPRESSED WRITTEN CON-
SENT OF SWA ARCHITECTS.

PROJECT NO:
Overbrook Lofts

PROJECT MGR:
DA

DATE:
10/06/14

OVERBROOK WEST

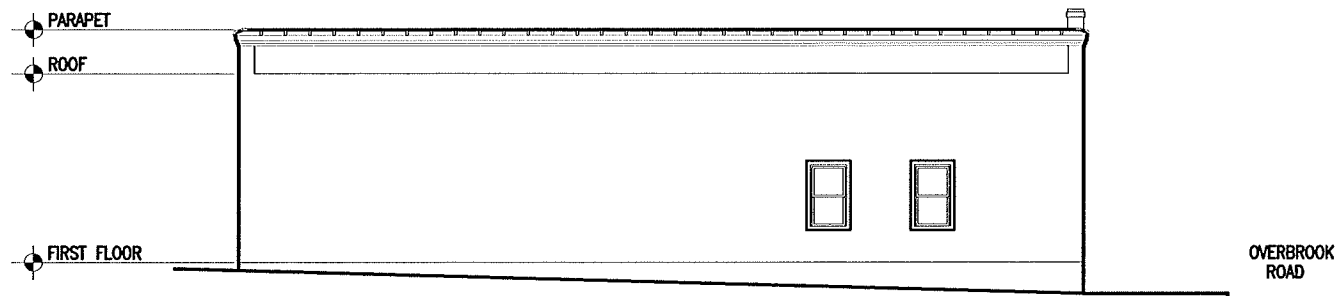
Overbrook and Hermitage Roads
Richmond, Virginia

TITLE:

Building
Section

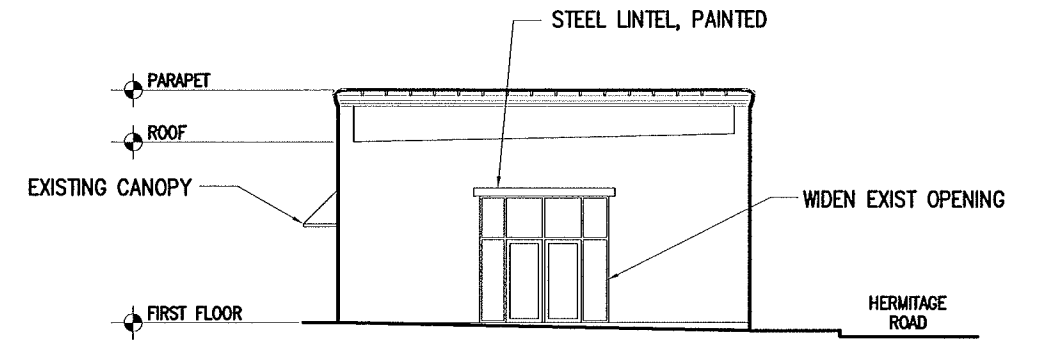
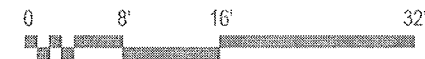
Section B

A3.01



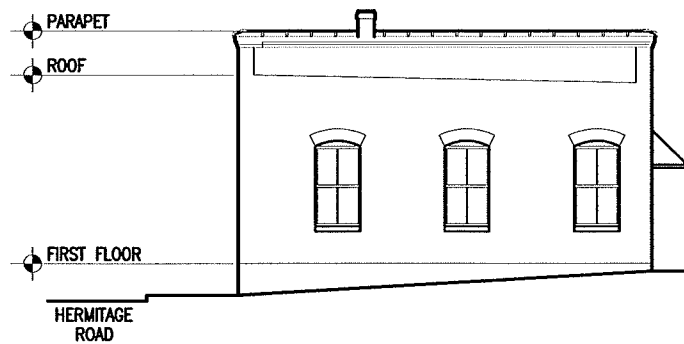
PHASE III
WEST ELEVATION

SCALE 1/16" = 1'-0"



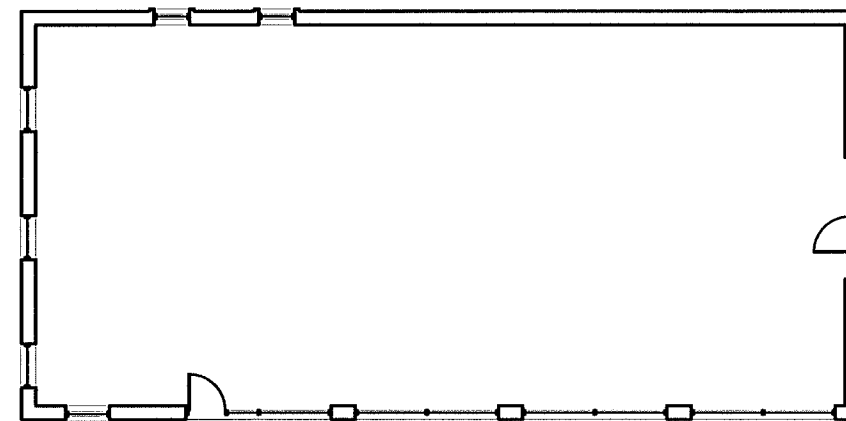
PHASE III
NORTH ELEVATION

SCALE 1/16" = 1'-0"



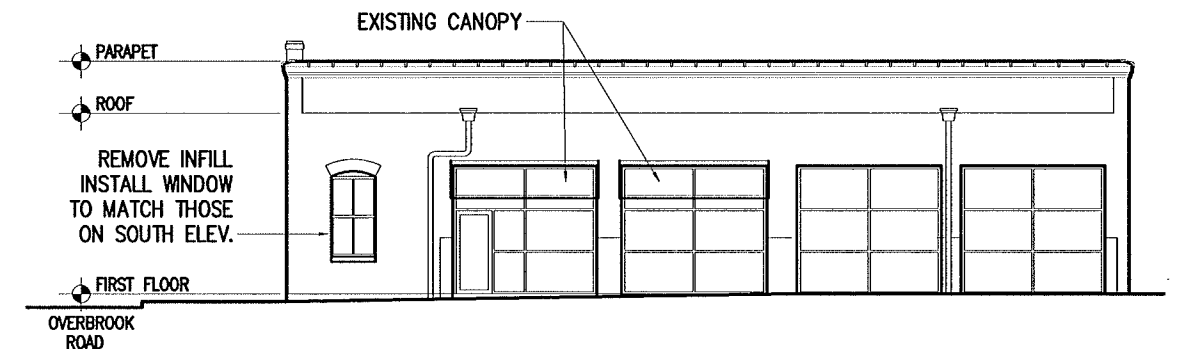
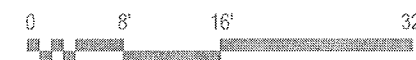
PHASE III
SOUTH ELEVATION

SCALE 1/16" = 1'-0"



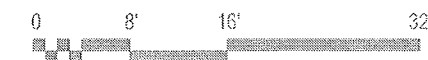
PHASE III
FLOOR PLAN

SCALE 1/16" = 1'-0"



PHASE III
EAST ELEVATION

SCALE 1/16" = 1'-0"



swa Architects-VA, Inc.
1553 E. Main Street Richmond, Va 23219

© SWA ARCHITECTS-VA, INC. MATERIAL INCLUDED HEREON IS COVERED BY COPYRIGHT. USE OF THIS WORK IN WHOLE OR IN PART IS FORBIDDEN WITHOUT THE EXPRESSED WRITTEN CONSENT OF SWA ARCHITECTS.

PROJECT NO:
Overbrook Lofts

PROJECT MGR:
MS

DATE:
01/30/14
SPECIAL USE

OVERBROOK LOFTS

Overbrook and Hermitage Roads
Richmond, Virginia

TITLE:

Existing Elevations and Plan

Section C

A1.01