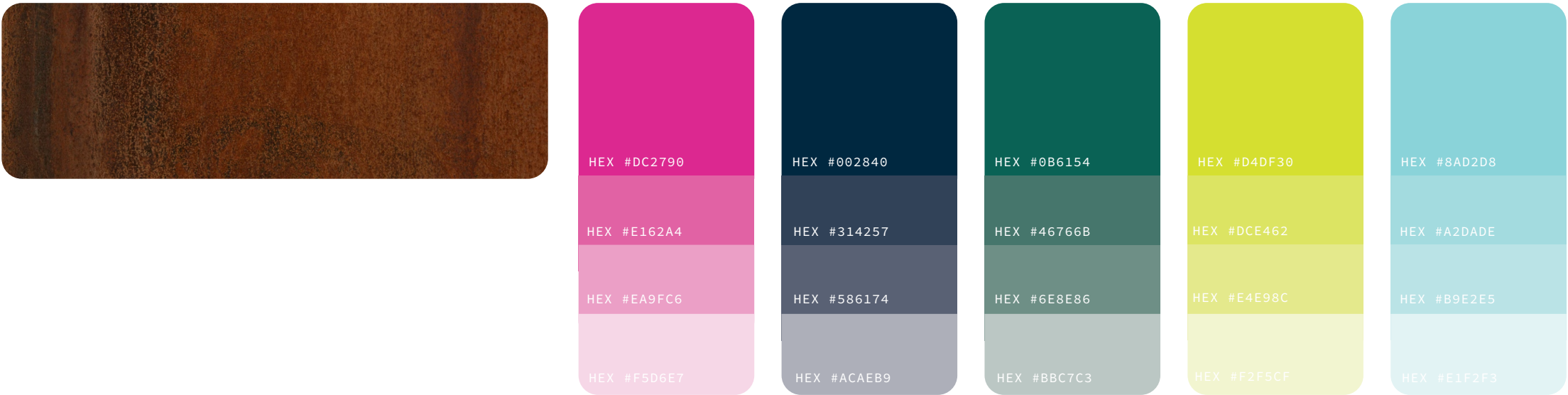
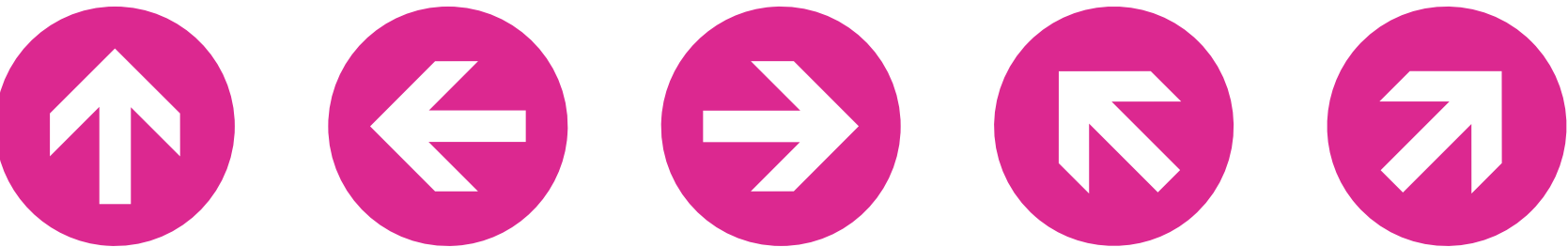


SIGNAGE & WAYFINDING Design

COLOR PALETTE:



ARROWS:



SYMBOLS:



THIS DRAWING REPRESENTS DESIGN INTENT ONLY.

Date	Revisions	Scale
4.14.25	6.3.25 6.12.25	NTS

Client/Project Brown's Island Wayfinding	1
--	---

FONTS:

BROWN'S ISLAND

Solono Gothic Pro

ABCDEFGHIJKLMNOPQRSTUVWXYZ
 1234567890 abcdefghijklmnopqrstuvwxyz

Source Sans Variable Semibold

ABCDEFGHIJKLMNOPQRSTUVWXYZ
1234567890 abcdefghijklmnopqrstuvwxyz

Source Sans Variable Semibold Italic

THIS DRAWING REPRESENTS DESIGN INTENT ONLY.

Date 4.14.25	Revisions	Scale NTS
-----------------	-----------	--------------

Client/Project
Brown's Island
Wayfinding

BROWN'S ISLAND

GRAPHIC STANDARDS Sign Family

Sign Type G & P: Structural beams, w/perforat-ed panels. Panels to be 3/8" aluminum single or double sided and to have pattina with rust finish. Text and pattern to be on the same panel. Graphics to be digitally direct-printed to the panel. Pink rules to be dimesnional, attached to the sign face. Brown's Island letters to be dimensional. Circles containing arrows to be 1/8" plates attacehd to the sign face. Paint to be Mathews paint. All signs to have double coat of UV protection and anti-grafitti coating. Side beams to have grooves for the panels. Panels welded to the beams. All edges and corners to be ground smooth, straight, and square with no gaps or voids. All hardware to be concealed /painted to match.

Signs to have a 3" base concrete w/pigment to match sign color and a 3000 PSI concrete footer. The size and depth of the concrete footer shall be determined by the fabricator. The footers must be certified by engineers registered in the state Virginia.

Fabricator: Check flood levels in the area and elevate the sign as needed with a longer base.

These drawings represent design intent only, not for construction. The fabricator is responsible for all final engineering and should submit shop drawings for approval, before proceeding with fabrication.

Any variations to design, materials, or fabrication methods must be approved by the Client and the Designer. The final product quality of fit and finish must meet or exceed the requirements of these design intent documents.

The colors shown are for reference only, and color samples should be presented for approval prior to fabrication.

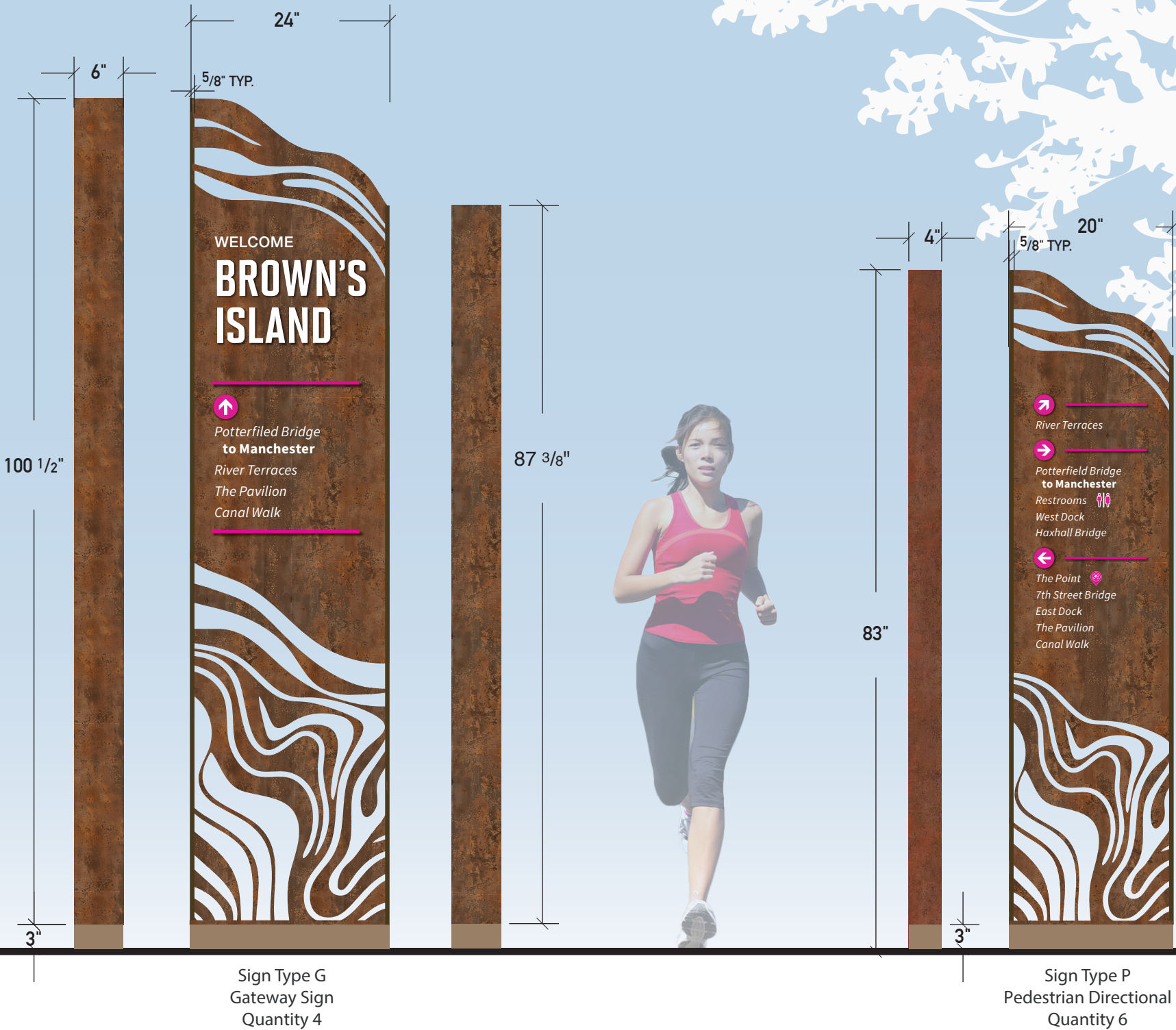
The fabricator should verify actual site conditions and perform detailed site surveys before the fabrication and installation.

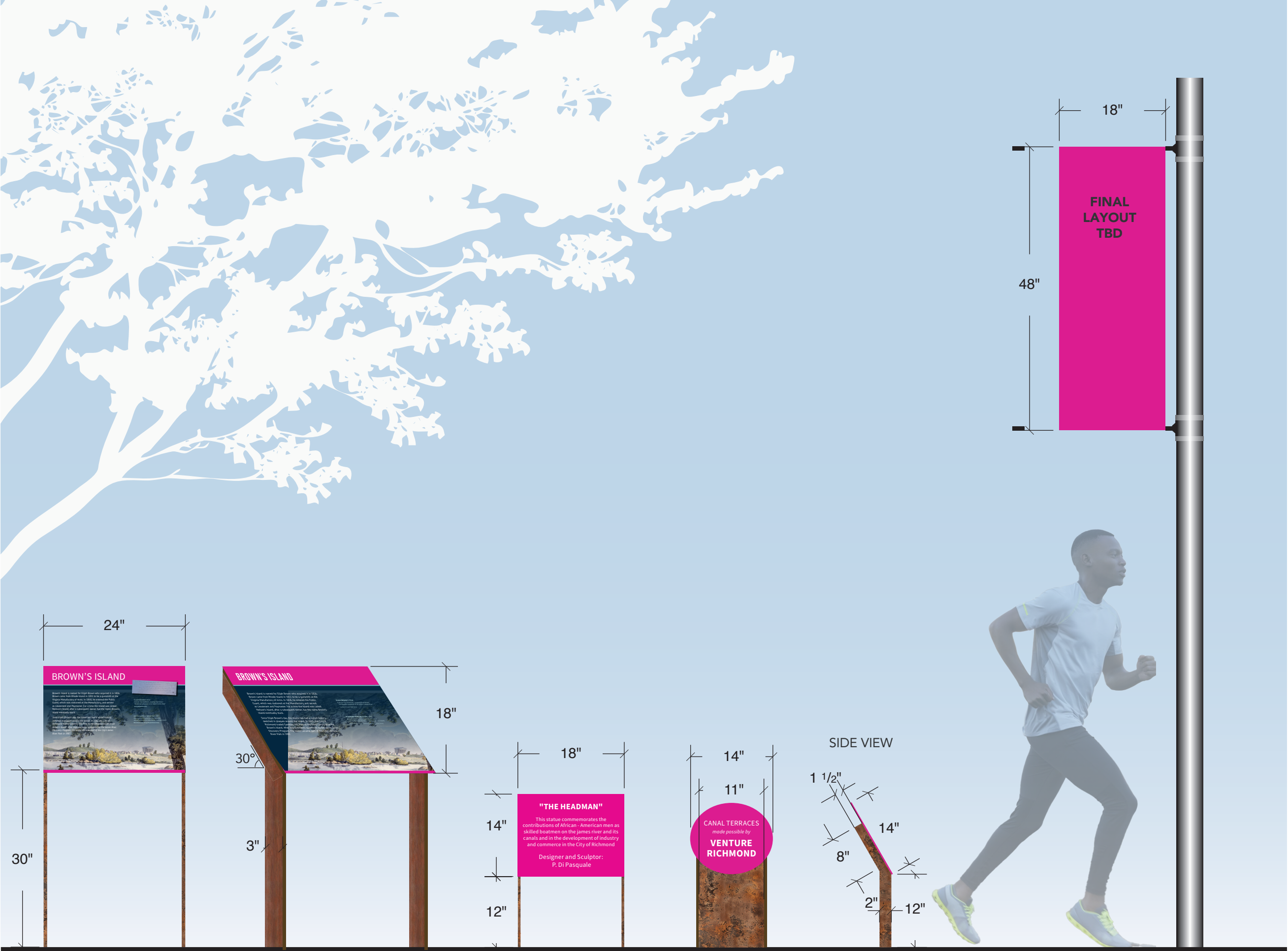
These drawings show messages for general reference only. Refer to message schedules for all required messages.

THIS DRAWING REPRESENTS DESIGN INTENT ONLY.

Date	Revisions	Scale
4.15.25	6.3.25 6.9.25	3/4" = 1'

Client/Project
Brown's Island
Wayfinding





Sign Type E1
Exhibit/Interpretive Sign
Quantity 5

Sign Type E2
Exhibit/Artwork Sign
Quantity 5

Sign Type D1
Single Donor Sign
Quantity 3

Sign Type B
Banner
Quantity 24

BROWN'S ISLAND

GRAPHIC STANDARDS

Sign Family

Exhibit signs: Support stucture to be aluminum to have pattina with rust finish. Exhibit panels to have a 30° slant. Panels to be 1/4" aluminum with graphics to be digitally direct-printed to the panel. Paint to be Mathews paint. All signs to have double coat of UV protection and anti-graffitti coating.

Small donor signs: Side beans to have grooves for the vertical panels w/the the angled top section. Panels welded to the beams. Circular pink panels to be 1/8" aluminum with graphics to be digitally direct-printed to the panel. Both exhibit and donor signs to have all edges and corners to be ground smooth, straight, and square with no gaps or voids. All hardware to be concealed /painted to match.

3000 PSI concrete footer. The size and depth of the concrete footer shall be determined by the fabricator. The footers must be certified by engineers registered in the state Virginia. Fabricator: Check flood levels in the area and elevate the sign as needed with a base.

Banner to have cast aluminum heavy duty spring bracket, fiberglass banner arms with tempered aluminum sleeve that adds 20% strength to rods. Arms to be resistant to cracks and corrosion. The top and bottom holders should be 3/4 in. diameter poles with metal sleeves at the ends. Banners to be attached to light poles with stainless steel bands with buckles.

NOTE: this type of hardware is available at <https://britteninc.com/> <https://bannersaver.com/>
The banner should be commercial-grade, heavy weight 18 oz, vinyl banner with pole pockets at the top and bottom. Vinyl to be mildew and water resistant, fade resistant with double needle-lock stitching and with 15 year warranty. Vinyl, printed front and back. Printing to be high resolution.

These drawings represent design intent only, not for construction. The fabricator is responsible for all final engineering and should submit shop drawings for approval, before proceeding with fabrication.

Any variations to design, materials, or fabrication methods must be approved by the Client and the Designer. The final product quality of fit and finish must meet or exceed the requirements of these design intent documents.

The colors shown are for reference only, and color samples should be presented for approval prior to fabrication.

The fabricator should verify actual site conditions and perform detailed site surveys before the fabrication and installation.

These drawings show messages for general reference only. Refer to message schedules for all required messages.

THIS DRAWING REPRESENTS DESIGN INTENT ONLY.

Date	Revisions	Scale
4.15.25	6.3.25 6.9.25 6.11.25	3/4" = 1'

Client/Project
Brown's Island
Wayfinding

BROWN'S ISLAND

GRAPHIC STANDARDS

Sign Family

Large Donor Signs: Structural beams, w/ perforated panels. Panels to be 3/8" aluminum single sided and to have sections with pattina with rust finish and sections satin painted. Applied circular elements welded to the back panel to be 1/8 " painted aluminum with graphics. Graphics to be digitally direct-printed to the panels. Pink rules to be dimesnional. Paint to be Mathews paint. All signs to have double coat of UV protection and anti-graffitti coating. Side beams to have grooves for the panels. Panels welded to the beams. All edges and corners to be ground smooth, straight, and square with no gaps or voids. All hardware to be concealed /painted to match.

3000 PSI concrete footer. The size and depth of the concrete footer shall be determined by the fabricator. The footers must be certified by engineers registered in the state of Virginia.

Fabricator: Check flood levels in the area and elevate the sign as needed with a base.

Regulatory sign: panel to be 1/8" aluminum single sided and to have pattina with rust finish. Graphics to be digitally direct-printed to the panel. Sign to have double coat of UV protection and anti-graffitti coating. Panel to be mounted to existing rail or seawall . All edges and corners to be ground smooth, straight, and square with no gaps or voids. All hardware to be concealed /painted to match.

These drawings represent design intent only, not for construction. The fabricator is responsible for all final engineering and should submit shop drawings for approval, before proceeding with fabrication.

Any variations to design, materials, or fabrication methods must be approved by the Client and the Designer. The final product quality of fit and finish must meet or exceed the requirements of these design intent documents.

The colors shown are for reference only, and color samples should be presented for approval prior to fabrication.

The fabricator should verify actual site conditions and perform detailed site surveys before the fabrication and installation.

These drawings show messages for general reference only. Refer to message schedules for all required messages.

THIS DRAWING REPRESENTS DESIGN INTENT ONLY.

Date	Revisions	Scale
4.15.25	6.3.25 6.9.25	3/4" = 1'

Client/Project
Brown's Island
Wayfinding

THIS LAYOUT IS FOR SIZE REFERENCE
FOR PRICING ONLY
FINAL LAYOUT TBD



Sign Type D2
Multiple Donors Sign
Quantity 1

Sign Type R
Regulatory
Quantity 6

BROWN'S ISLAND

GRAPHIC STANDARDS
Sign Family

Restroom symbols to be mounted to the restroom building walls. Material to be 3M™ Envision™ Print Wrap Film LX480mC. Information Available: https://www.3m.com/3M/en_US/p/d/b00026359/

Restroom stall signs to be 1/8" thick aluminum to have pattina with rust finish with dimensional copy, symbols and Grade 2 Braille. All edges to be highly polished. Sign is mounted to wall face with 1/16" high bond double sided foam tape and silicone adhesive.

Restroom signs for individual stalls to be to have background with pattina with rust finish ADA compliant dimensional oletters and symbols to be white and Braille to match background color or to be transparent bids.

These drawings represent design intent only, not for construction. The fabricator is responsible for all final engineering and should submit shop drawings for approval, before proceeding with fabrication.

Any variations to design, materials, or fabrication methods must be approved by the Client and the Designer. The final product quality of fit and finish must meet or exceed the requirements of these design intent documents.

Colors shown are for reference only and color samples should be presented for approval prior to fabrication.

The fabricator should verify actual site conditions and perform detailed site surveys before the fabrication and installation.

These drawings show messages for general reference only. Refer to message schedules for all required messages.

THIS DRAWING REPRESENTS DESIGN INTENT ONLY.

Date	Revisions	Scale
4.15.25	6.3.25	NTS

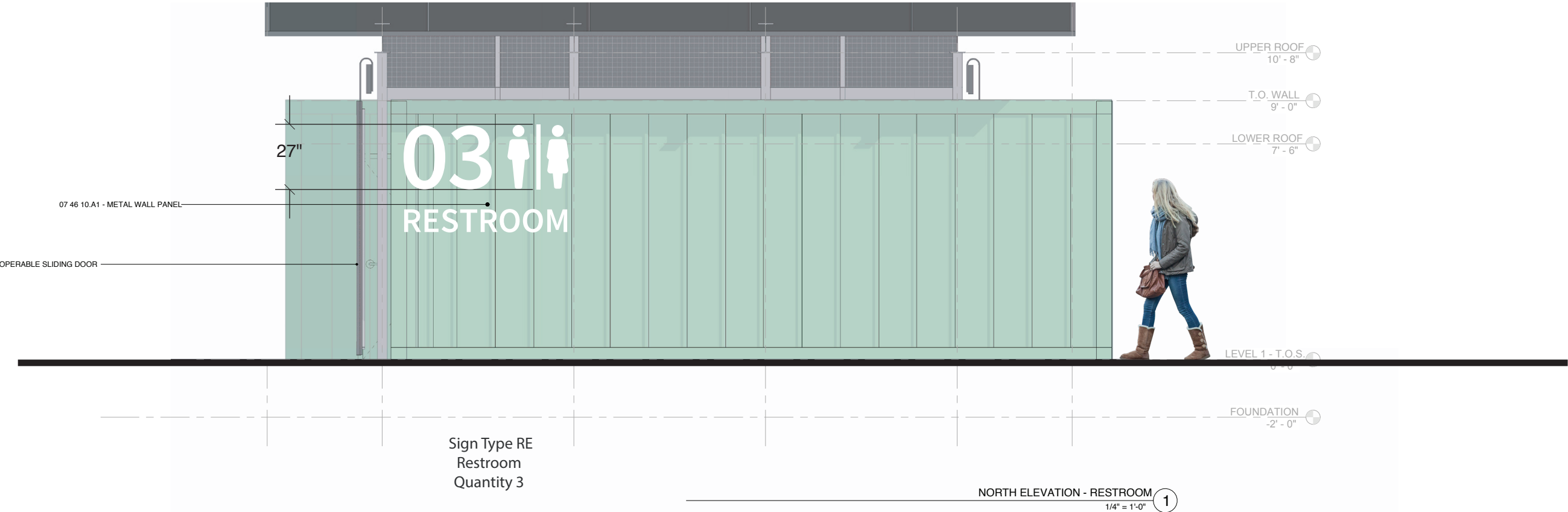
Client/Project
Brown's Island
Wayfinding

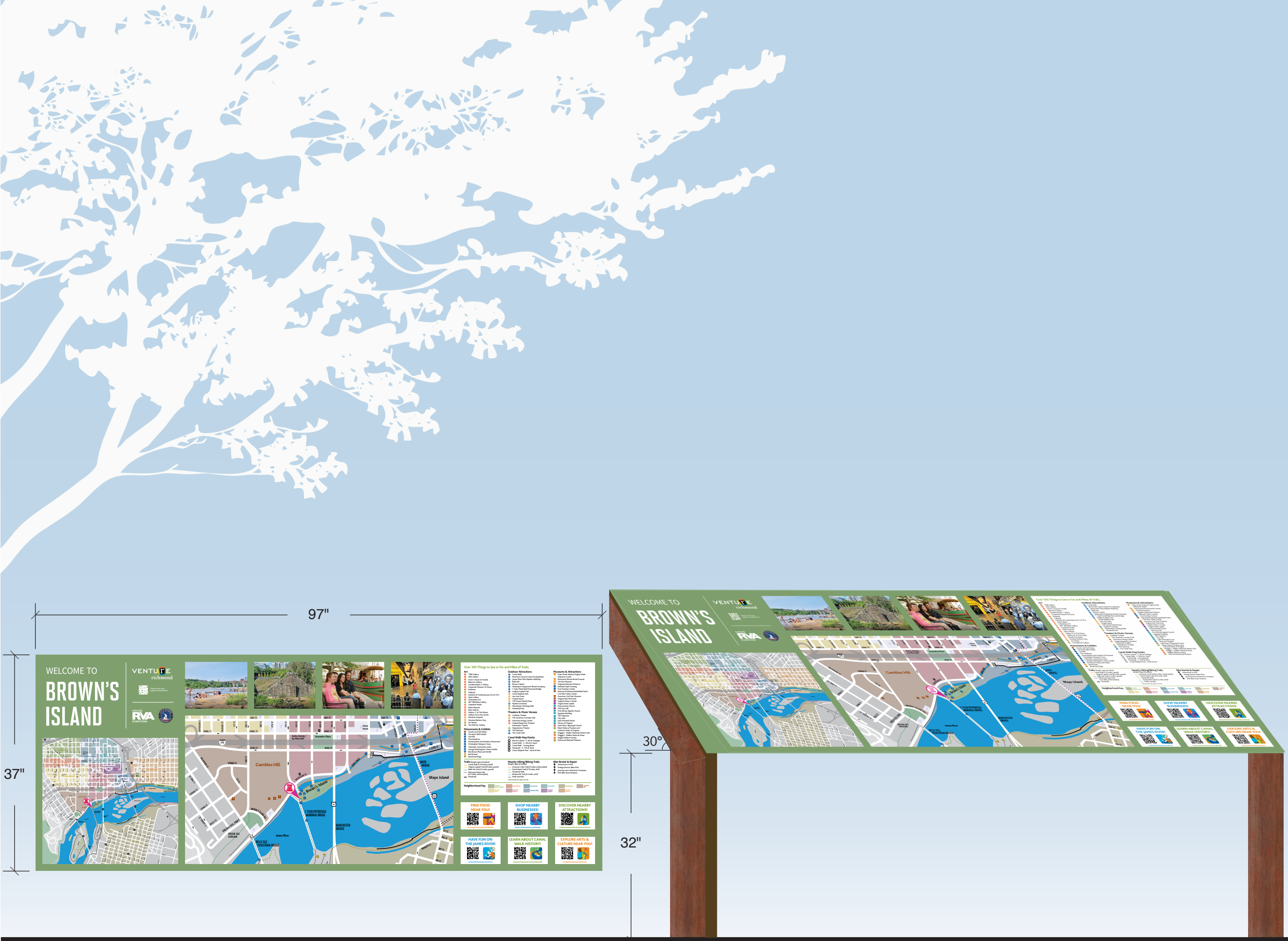
Restroom For Individual Stalls
Quantity 11 (2 will have accessible symbol)



Scale: 1/4"=1"

Two sets of vinyl decals to be applied to the north and south elevations of the restroom independent building and one set to be applied to the east elevation of the Pavilion attached building
FINAL LAYOUT & COLOR TBD





BROWN'S ISLAND

GRAPHIC STANDARDS

Sign Family

Free Standing Map: Support structure to be aluminum to have pattina with rust finish. Panelsto have a 30° slant. Panels to be 1/4" aluminum with graphics to be digitally direct-printed to the panel. Paint to be Mathews paint. All signs to have double coat of UV protection and anti-graffitti coating.

Sign to have all edges and corners to be ground smooth, straight, and square with no gaps or voids. All hardware to be concealed /painted to match.

3000 PSI concrete footer. The size and depth of the concrete footer shall be determined by the fabricator. The footers must be certified by engineers registered in the state Virginia. Fabricator: Check flood levels in the area and elevate the sign as needed with a base.

These drawings represent design intent only, not for construction. The fabricator is responsible for all final engineering and should submit shop drawings for approval, before proceeding with fabrication.

Any variations to design, materials, or fabrication methods must be approved by the Client and the Designer. The final product quality of fit and finish must meet or exceed the requirements of these design intent documents.

The colors shown are for reference only, and color samples should be presented for approval prior to fabrication.

The fabricator should verify actual site conditions and perform detailed site surveys before the fabrication and installation.

These drawings show messages for general reference only. Refer to message schedules for all required messages.

THIS DRAWING REPRESENTS DESIGN INTENT ONLY.

Date	Revisions	Scale
4.15.25	6.3.25	3/4" = 1'

Client/Project
Brown's Island
Wayfinding

Sign Type M
Free Standing Map
Quantity 2

BROWN'S ISLAND

GRAPHIC STANDARDS Sign Family



THIS DRAWING REPRESENTS DESIGN INTENT ONLY.

Date	Revisions	Scale
4.15.25	6.3.25	NTS

Client/Project
Brown's Island
Wayfinding



**WELCOME TO
BROWN'S
ISLAND**

While enjoying your visit, please observe the following regulations:

- All dogs must be on a leash.
- Clean up after your pets (or face a \$250 fine).
- Bicycles must yield to pedestrians.


The following activities are not permitted on Brown's Island:

- Skateboarding
- Swimming, washing and wading
- Camping
- Unauthorized vehicles and boats
- Solicitation and vending without a proper permit
- Fishing and feeding the wildlife

Accessible entrances are located at Railroad Bridge, 5th, and 7th Streets.



**WELCOME
BROWN'S
ISLAND**

 **Potterfiled Bridge
to Manchester**
River Terraces
The Pavilion
Canal Walk