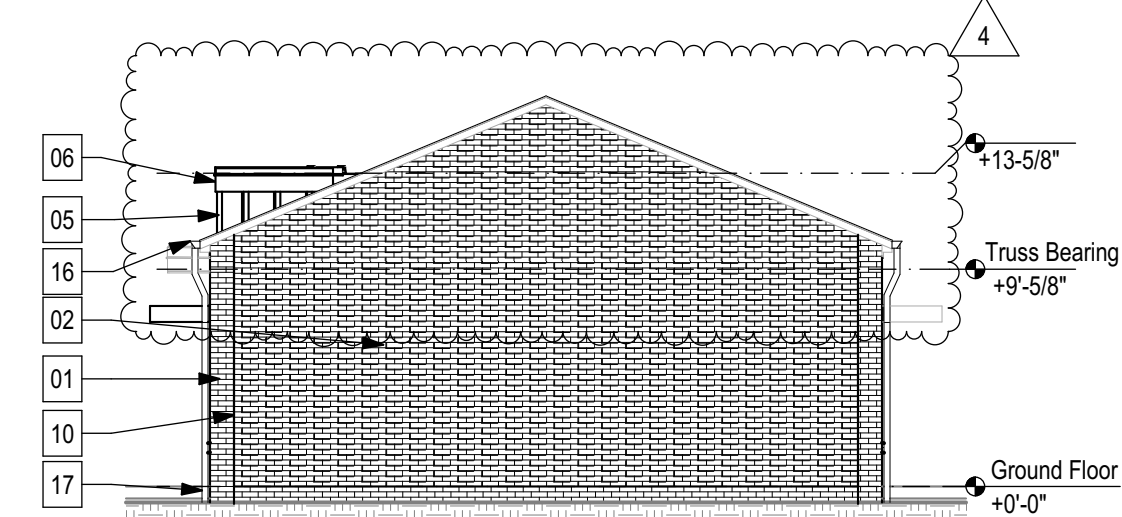
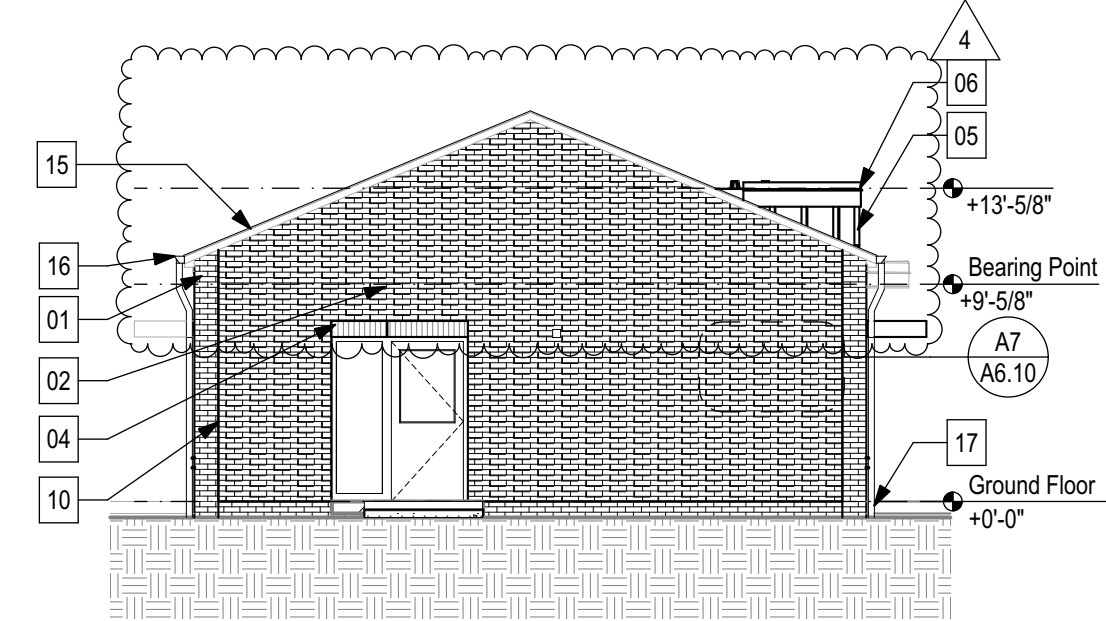


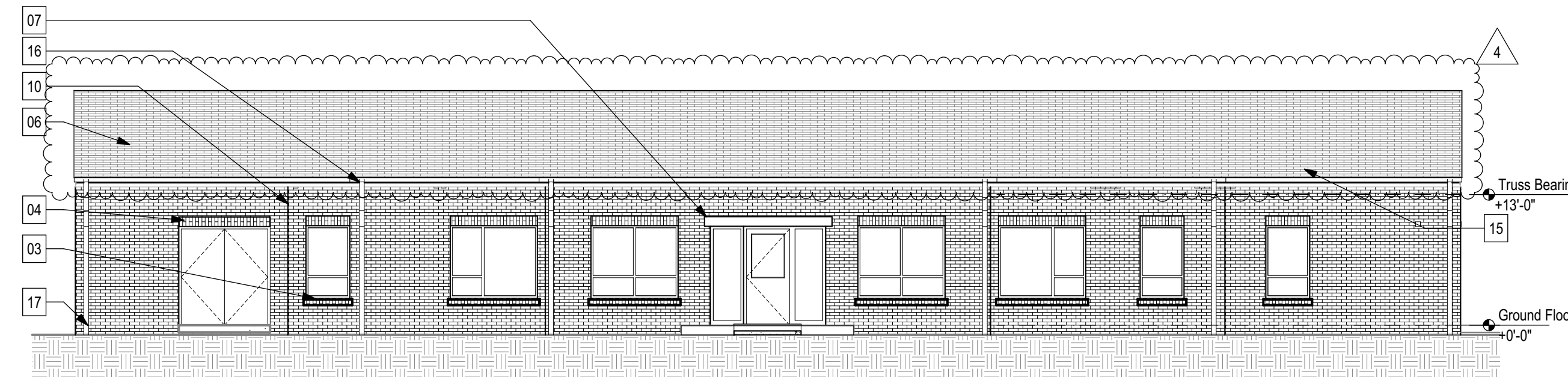
Proposed Townhouse Elevations (typ.)



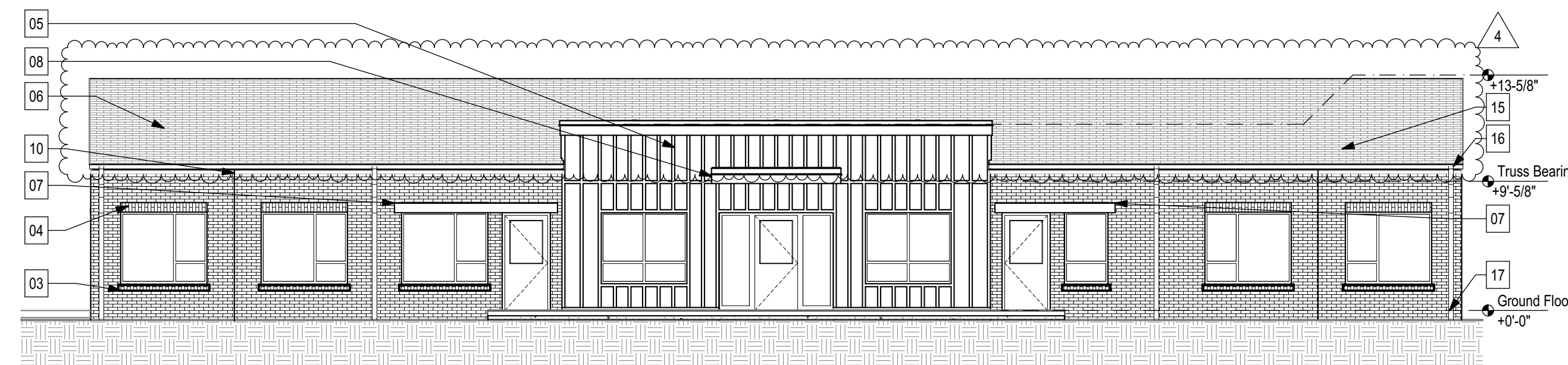
Community Building Right Elevation
SCALE: 1/8" = 1'-0" **E7**



Community Building Left Elevation
SCALE: 1/8" = 1'-0" **E3**



Community Building Rear Elevation
SCALE: 1/8" = 1'-0" **C3**



Community Building Front Elevation
SCALE: 1/8" = 1'-0" **A3**

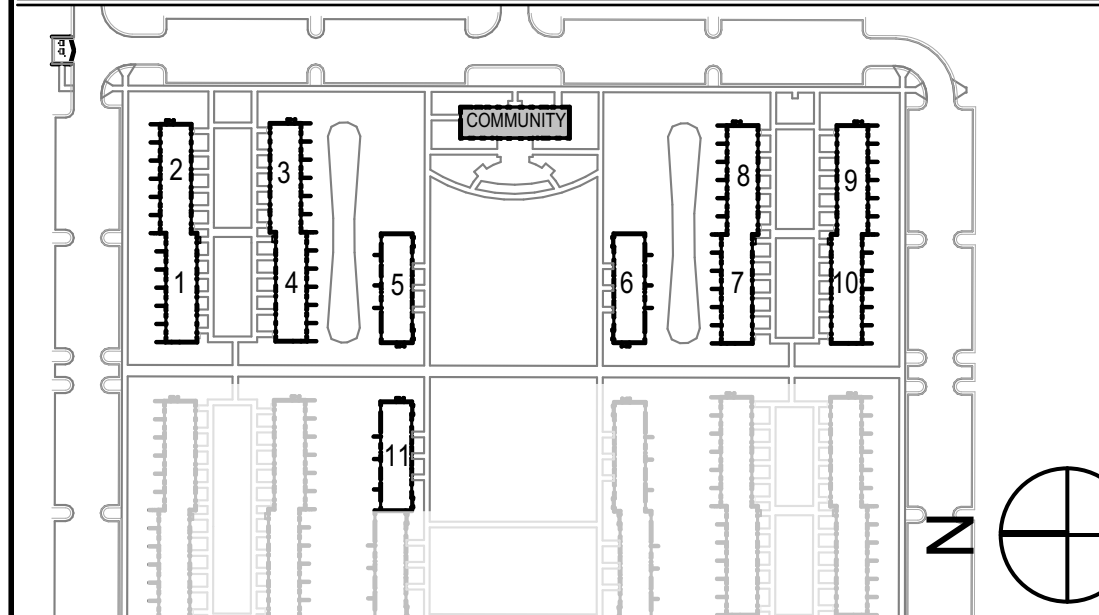
ELEVATION GENERAL NOTES

- SEE A6.10 FOR ACCENT BRICK PATTERN DETAIL.
- SEE SHEET A1.01 FOR COLOR OF BRICK AT EACH BUILDING.

ELEVATION NOTES

- 01 BRICK VENEER - RUNNING BOND
- 02 ACCENT BRICK - RUNNING BOND, EVERY 3RD BRICK PROJECTING. SEE DETAIL
- 03 BRICK SILL
- 04 BRICK SOLDIER LINTEL
- 05 FIBER CEMENT BOARD & BATTEN
- 06 FASCIA WITH DRIP EDGE
- 07 BRISE - SOLEIL SHADING DEVICE. SEE C9/A6.10
- 08 ENTRY CANOPY
- 09 PRIVACY FENCE, DETAIL ON SHEET A1.01. SEE CIVIL PLANS
- 10 EXPANSION JOINT
- 11 OVERFLOW SCUPPER
- 12 HVAC CONDENSOR, ONE PER UNIT
- 13 GUARD RAIL, 42". SEE SPECIFICATIONS.
- 14 THROUGH-WALL DUCT PENETRATION. SEE DETAIL. MULTIPLE INSTANCES. SEE MECHANICAL PLANS
- 15 ARCHITECTURAL SHINGLES
- 16 GUTTER AND DOWNSPOUT
- 17 CAST IRON DOWNSPOUT BOOT

KEY PLAN



CJMW
ARCHITECTURE

1030 Main St Lynchburg VA 24504
p. 434-847-6564
www.cjmw.com

Construction Drawings



Version	Issue Name	Date
1	VH COMMENT REVISIONS	6/26/20
4	VE/VH COMMENT RESPONSE	2/8/21

The Heights at Brady Square - 9%
2200 Brady St, Richmond, VA 23234

Copyright 2021
CJMW Architecture, P.A.

COMMUNITY BUILDING EXTERIOR ELEVATIONS

sheet

A5.08

date: 10/11/2019
commission: 18-1120
drawn by: PWF

