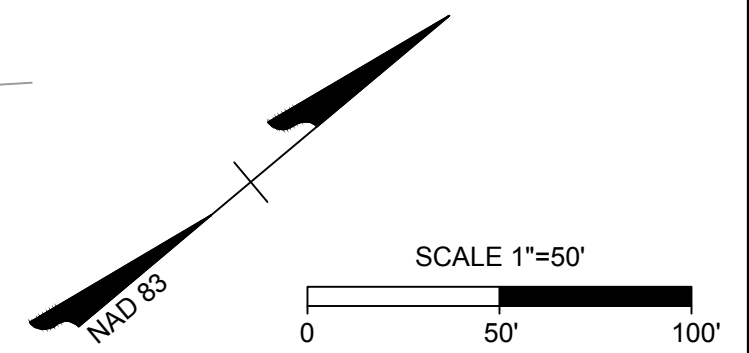
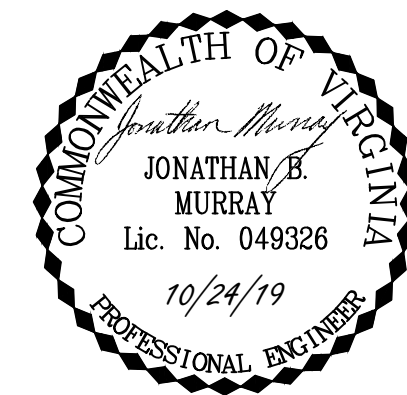
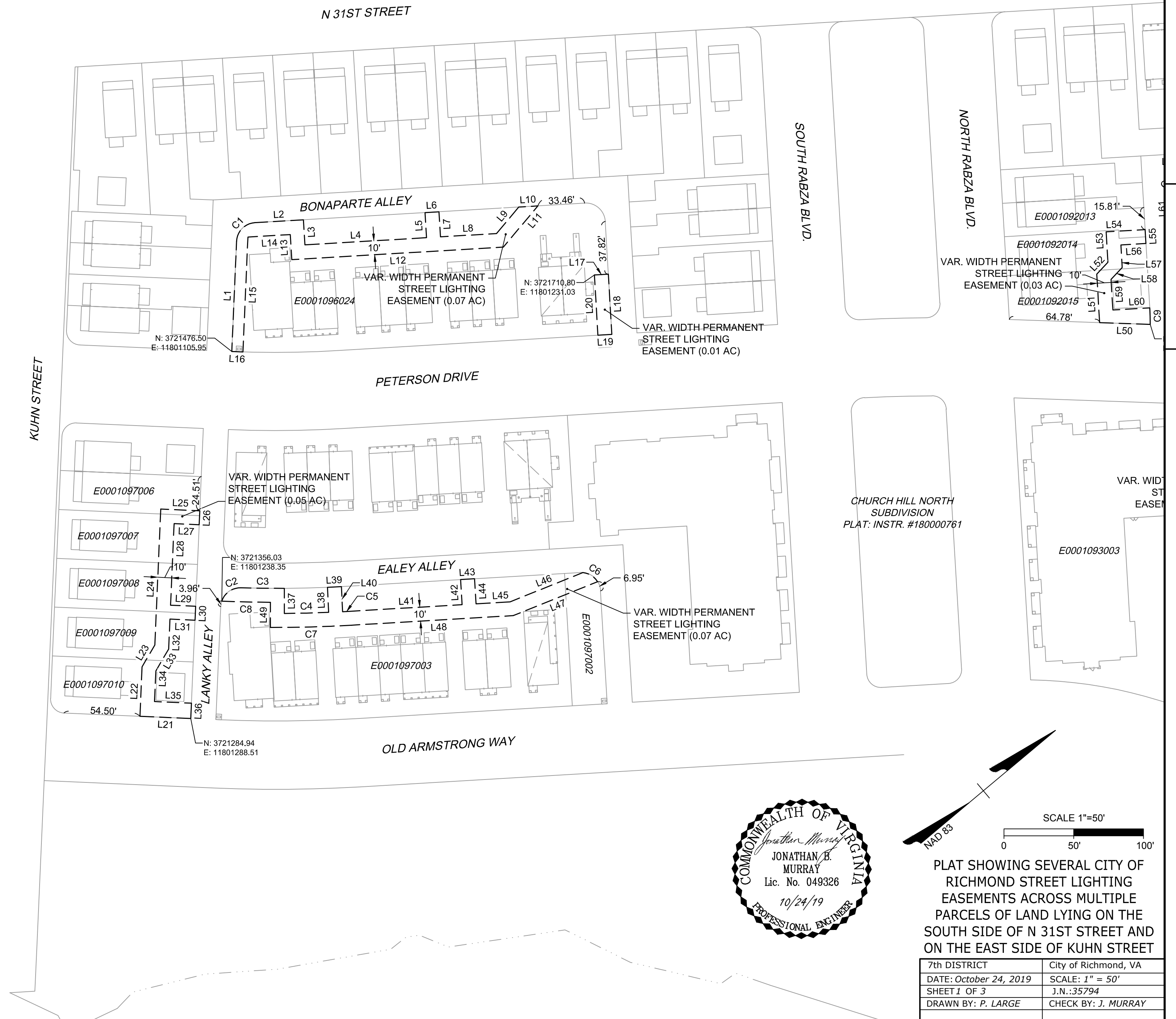


S:\40135794-Church\_Hill\_North\_ReiDWG\Sheet\Exhibit\20191024\_Streetlight Easement Plat.dwg | Plotted on 10/24/2019 1:39 PM | by Jon Murray



PLAT SHOWING SEVERAL CITY OF RICHMOND STREET LIGHTING EASEMENTS ACROSS MULTIPLE PARCELS OF LAND LYING ON THE SOUTH SIDE OF N 31ST STREET AND ON THE EAST SIDE OF KUHN STREET

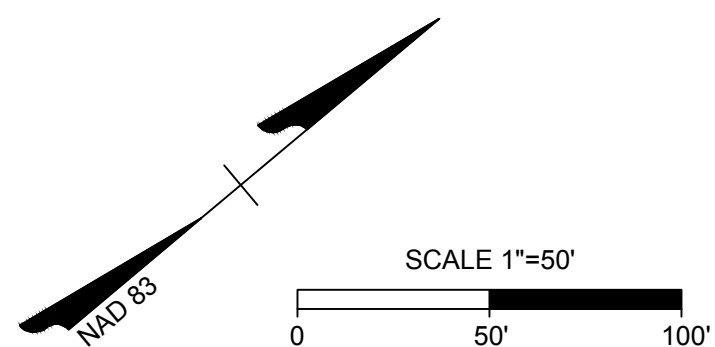
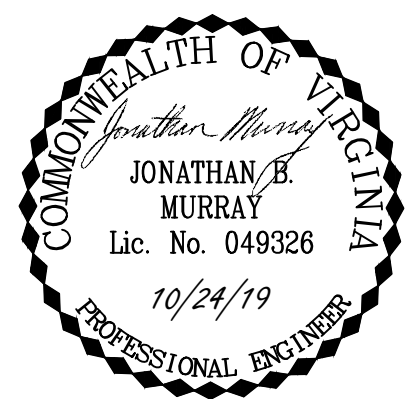
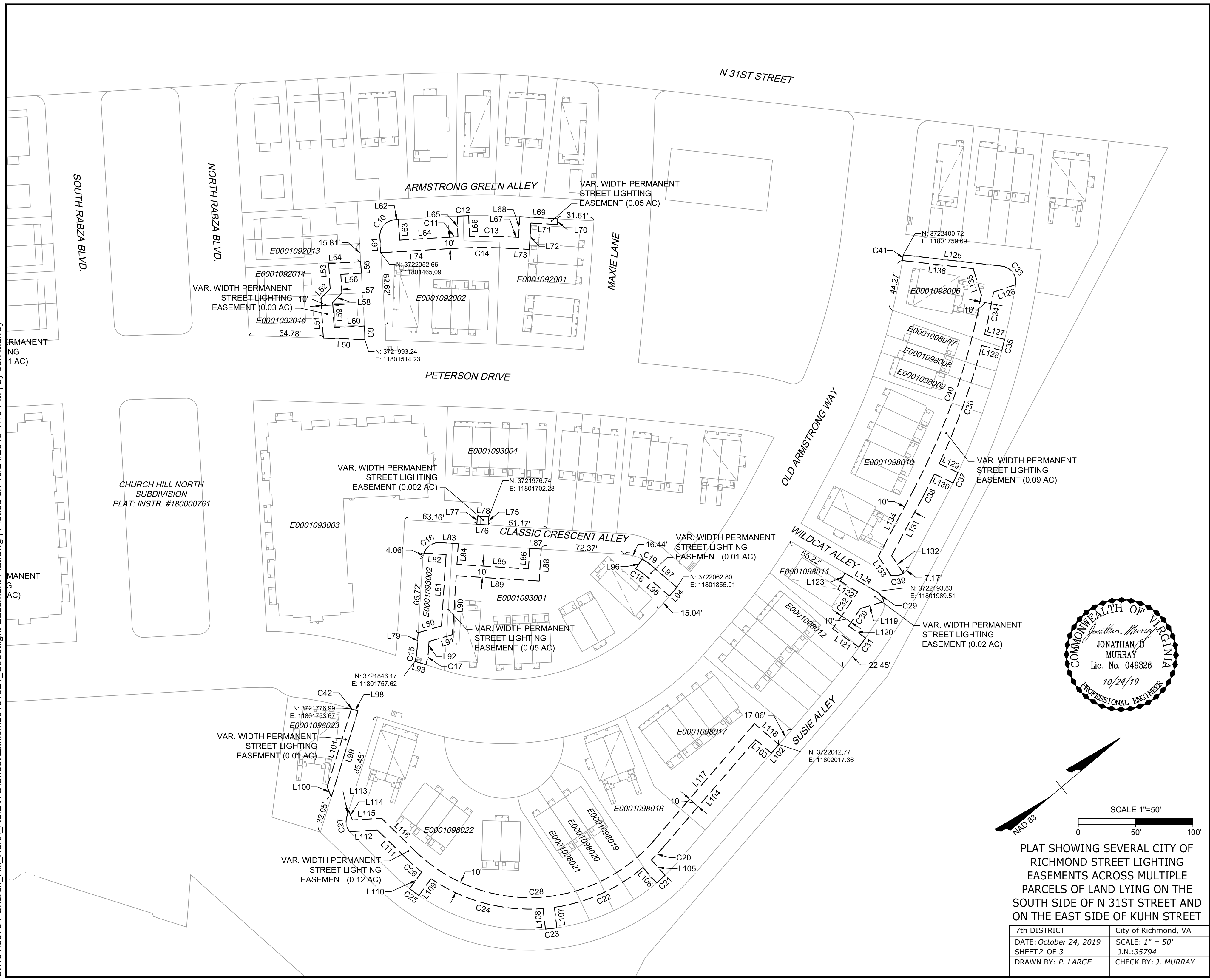
7th DISTRICT	City of Richmond, VA
DATE: October 24, 2019	SCALE: 1" = 50'
SHEET 1 OF 3	J.N.:35794
DRAWN BY: P. LARGE	CHECK BY: J. MURRAY

YOUR VISION ACHIEVED THROUGH OURS.  
 THIS DRAWING PREPARED AT THE  
**CORPORATE OFFICE**  
 1001 Boulders Parkway, Suite 300 | Richmond, VA 23225  
 TEL: 804.200.6500 FAX: 804.560.1016 www.timmons.com

**TIMMONS GROUP**

Site Development | Residential | Infrastructure | Technology

S:\40135794-Church\_Hill\_North\_RelDWG\Sheet\Exhibit\20191024\_Streetlight Easement Plat.dwg | Plotted on 10/24/2019 1:40 PM | by Jon Murray



PLAT SHOWING SEVERAL CITY OF RICHMOND STREET LIGHTING EASEMENTS ACROSS MULTIPLE PARCELS OF LAND LYING ON THE SOUTH SIDE OF N 31ST STREET AND ON THE EAST SIDE OF KUHN STREET

7th DISTRICT	City of Richmond, VA
DATE: October 24, 2019	SCALE: 1" = 50'
SHEET 2 OF 3	J.N.:35794
DRAWN BY: P. LARGE	CHECK BY: J. MURRAY

THIS DRAWING PREPARED AT THE  
**CORPORATE OFFICE**  
 1001 Boulders Parkway, Suite 300 | Richmond, VA 23225  
 TEL: 804.200.6500 FAX: 804.560.1016 www.timmons.com

YOUR VISION ACHIEVED THROUGH OURS.

**Site Development** | **Residential** | **Infrastructure** | **Technology**

**TIMMONS GROUP**

LINE TABLE		
LINE	LENGTH	BEARING
L1	79.00	N47°31'27"W
L2	34.82	N36°36'37"E
L3	18.00	S53°23'23"E
L4	87.31	N36°36'37"E
L5	18.00	N53°23'23"W
L6	10.00	N36°36'37"E
L7	18.00	S53°23'23"E
L8	40.27	N36°36'37"E
L9	24.78	N9°57'59"W
L10	13.77	N36°36'37"E
L11	38.55	S9°57'59"E
L12	151.89	S36°36'37"W
L13	18.00	N53°23'23"W
L14	30.44	S36°36'37"W
L15	82.40	S47°31'27"E
L16	8.00	S42°28'33"W
L17	10.00	N36°36'37"E
L18	43.18	S53°23'23"E
L19	10.00	S36°36'37"W
L20	43.18	N53°23'23"W
L21	36.50	N42°28'33"E
L22	35.49	S47°31'27"E
L23	18.12	S19°32'41"E
L24	97.49	S47°31'27"E
L25	28.00	S42°28'33"W

LINE TABLE		
LINE	LENGTH	BEARING
L26	10.00	N47°31'27"W
L27	18.00	N42°28'33"E
L28	58.49	N47°31'27"W
L29	18.00	S42°28'33"W
L30	10.00	N47°31'27"W
L31	18.00	N42°28'33"E
L32	21.50	N47°31'27"W
L33	18.12	N19°32'41"W
L34	22.00	N47°31'27"W
L35	26.50	S42°28'33"W
L36	11.00	N47°31'27"W
L37	18.00	S50°02'57"E
L38	18.00	N52°42'12"W
L39	10.00	N37°17'48"E
L40	18.00	S52°42'12"E
L41	80.01	N36°36'37"E
L42	18.00	N53°23'23"W
L43	10.00	N36°36'37"E
L44	18.00	S53°23'23"E
L45	24.47	N36°36'37"E
L46	56.20	N18°06'50"E
L47	65.16	S18°06'50"W
L48	116.11	S36°36'37"W
L49	18.00	N50°02'57"W
L50	36.27	N41°58'42"E

LINE TABLE		
LINE	LENGTH	BEARING
L51	34.81	S53°23'23"E
L52	11.67	S6°39'14"E
L53	21.87	S53°23'23"E
L54	28.00	S36°36'37"W
L55	10.00	N53°23'23"W
L56	18.00	N36°36'37"E
L57	16.19	N53°23'23"W
L58	11.67	N6°39'14"W
L59	22.00	N53°23'23"W
L60	26.50	S36°36'37"W
L61	14.00	N53°23'23"W
L62	3.00	N36°36'37"E
L63	18.00	S53°23'23"E
L64	44.71	N36°36'37"E
L65	18.00	N52°00'52"W
L66	18.00	S52°00'52"E
L67	4.72	N43°13'14"E
L68	18.00	N46°46'46"W
L69	33.26	N43°13'14"E
L70	5.00	S46°46'46"E
L71	23.26	S43°13'14"W
L72	23.00	S46°46'46"E
L73	14.72	S43°13'14"W
L74	61.71	S36°36'37"W
L75	7.30	N46°20'59"W

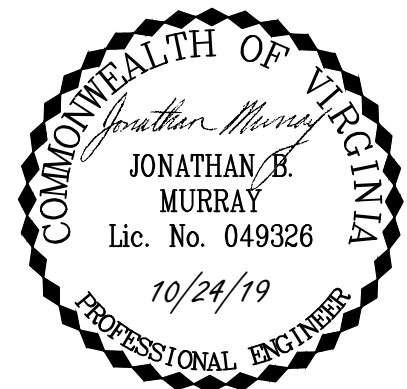
LINE TABLE		
LINE	LENGTH	BEARING
L76	10.00	N43°39'01"E
L77	7.30	S46°20'59"E
L78	10.00	S43°39'01"W
L79	13.74	N46°20'59"W
L80	21.27	N23°46'04"E
L81	62.49	N46°20'59"W
L82	19.42	S43°39'01"W
L83	16.00	N43°39'01"E
L84	18.00	S46°20'59"E
L85	62.57	N43°39'01"E
L86	18.00	N46°20'59"W
L87	10.00	N43°39'01"E
L88	28.00	S46°20'59"E
L89	72.57	S43°39'01"W
L90	51.51	S46°20'59"E
L91	21.27	S23°46'04"W
L92	6.72	S46°20'59"E
L93	10.01	S57°11'59"W
L94	10.00	S9°17'02"E
L95	29.07	S80°42'58"W
L96	10.10	N16°22'10"W
L97	29.07	N80°42'58"E
L98	4.58	N57°11'59"E
L99	78.78	S32°48'01"E
L100	9.69	N71°04'18"W

LINE TABLE		
LINE	LENGTH	BEARING
L101	71.17	N32°48'01"W
L102	10.00	N9°17'02"W
L103	18.00	N80°42'58"E
L104	124.86	N9°17'02"W
L105	18.01	S87°52'35"W
L106	18.01	N87°52'35"E
L107	18.01	N56°18'11"W
L108	18.01	S56°18'11"E
L109	18.01	N13°55'48"W
L110	18.01	S13°55'48"E
L111	36.32	N84°22'18"E
L112	24.19	N36°38'32"E
L113	5.84	S32°48'01"E
L114	8.94	N71°04'18"W
L115	25.56	S36°38'32"W
L116	40.74	S84°22'18"W
L117	134.86	S9°17'02"E
L118	28.00	S80°42'58"W
L119	21.11	S24°00'14"W
L120	18.08	N75°11'12"E
L121	28.07	S75°11'12"W
L122	17.71	S72°17'16"W
L123	8.00	N19°10'24"W
L124	31.42	N70°20'23"E
L125	86.52	S46°28'21"W

LINE TABLE		
LINE	LENGTH	BEARING
L126	20.45	N21°20'23"E
L127	18.00	S54°08'33"W
L128	18.00	N54°08'33"E
L129	18.00	S65°22'53"W
L130	18.00	N65°22'53"E
L131	58.05	N22°03'10"W
L132	18.41	N83°28'40"W
L133	19.89	S83°28'40"E
L134	63.99	S22°03'10"E
L135	24.14	S67°05'11"E
L136	62.23	N46°28'21"E

CURVE TABLE						
CURVE	RADIUS	LENGTH	TANGENT	DELTA	CHORD BEARING	CHORD
C1	14.00	20.56	12.64	84°08'04"	N5°27'25"W	18.76
C2	14.00	17.83	10.35	72°58'12"	N5°09'43"E	16.65
C3	884.00	31.17	15.59	2°01'13"	N40°38'13"E	31.17
C4	902.00	31.78	15.89	2°01'08"	N38°37'26"E	31.78
C5	902.00	5.81	2.90	0°22'08"	N36°47'41"E	5.81
C6	14.00	12.85	6.92	52°34'39"	N71°51'29"E	12.40
C7	912.00	58.17	29.10	3°39'17"	S38°26'16"W	58.16
C8	894.00	34.85	17.43	2°14'01"	S41°23'17"W	34.85
C9	191.00	11.89	5.95	3°33'57"	N51°29'38"W	11.89
C10	14.00	21.99	14.00	90°00'00"	N8°23'23"W	19.80
C11	473.00	6.35	3.18	0°46'10"	N36°59'42"E	6.35
C12	491.00	10.00	5.00	1°10'01"	N37°59'08"E	10.00
C13	473.00	38.22	19.12	4°37'46"	N40°54'21"E	38.21
C14	463.00	53.42	26.74	6°36'37"	S39°54'56"W	53.39
C15	59.00	11.48	5.76	11°09'06"	N40°46'27"W	11.47
C16	14.00	17.93	10.43	73°23'54"	N6°57'03"E	16.73
C17	69.00	13.85	6.95	11°29'57"	S40°36'01"E	13.83
C18	31.00	8.86	4.46	16°22'03"	S72°31'57"W	8.83
C19	41.00	10.08	5.07	14°05'25"	N73°40'16"E	10.06
C20	153.00	14.12	7.06	5°17'15"	N6°38'24"W	14.11
C21	171.00	10.00	5.00	3°21'04"	N2°07'25"W	10.00
C22	153.00	85.65	43.98	32°04'30"	N15°47'12"E	84.54

CURVE TABLE						
CURVE	RADIUS	LENGTH	TANGENT	DELTA	CHORD BEARING	CHORD
C23	171.00	10.00	5.00	3°21'04"	N33°41'49"E	10.00
C24	153.00	103.15	53.62	38°37'39"	N54°53'00"E	101.21
C25	171.00	10.00	5.00	3°21'04"	N76°04'12"E	10.00
C26	153.00	17.17	8.59	6°25'44"	N81°09'26"E	17.16
C27	14.00	13.70	7.45	56°04'07"	S60°50'05"E	13.16
C28	143.00	233.75	152.43	93°39'19"	S37°32'38"W	208.58
C29	14.00	11.56	6.13	47°19'27"	S85°59'54"E	11.24
C30	719.14	18.53	9.27	1°28'36"	S15°57'00"E	18.53
C31	629.00	10.00	5.00	0°54'39"	S14°45'18"E	10.00
C32	713.12	38.88	19.44	3°07'25"	N15°58'33"W	38.87
C33	14.00	22.67	14.69	92°45'59"	N87°08'40"W	20.27
C34	611.00	37.72	18.87	3°32'15"	N38°05'42"W	37.72
C35	629.00	10.00	5.00	0°54'39"	N35°51'27"W	10.00
C36	611.00	109.85	55.07	10°18'04"	N30°14'17"W	109.70
C37	629.00	10.00	5.00	0°54'39"	N24°37'07"W	10.00
C38	611.00	22.36	11.18	2°05'49"	N23°06'04"W	22.36
C39	14.00	11.25	5.95	46°02'17"	N30°33'12"E	10.95
C40	601.00	182.41	91.91	17°23'24"	S30°44'52"E	181.71
C41	528.00	5.00	2.50	0°32'34"	S41°33'15"E	5.00
C42	272.00	1.42	0.71	0°17'59"	N57°02'59"E	1.42



PLAT SHOWING SEVERAL CITY OF RICHMOND STREET LIGHTING EASEMENTS ACROSS MULTIPLE PARCELS OF LAND LYING ON THE SOUTH SIDE OF N 31ST STREET AND ON THE EAST SIDE OF KUHN STREET

7th DISTRICT	City of Richmond, VA
DATE: October 24, 2019	SCALE: 1" = 50'
SHEET 3 OF 3	J.N.:35794
DRAWN BY: P. LARGE	CHECK BY: J. MURRAY