

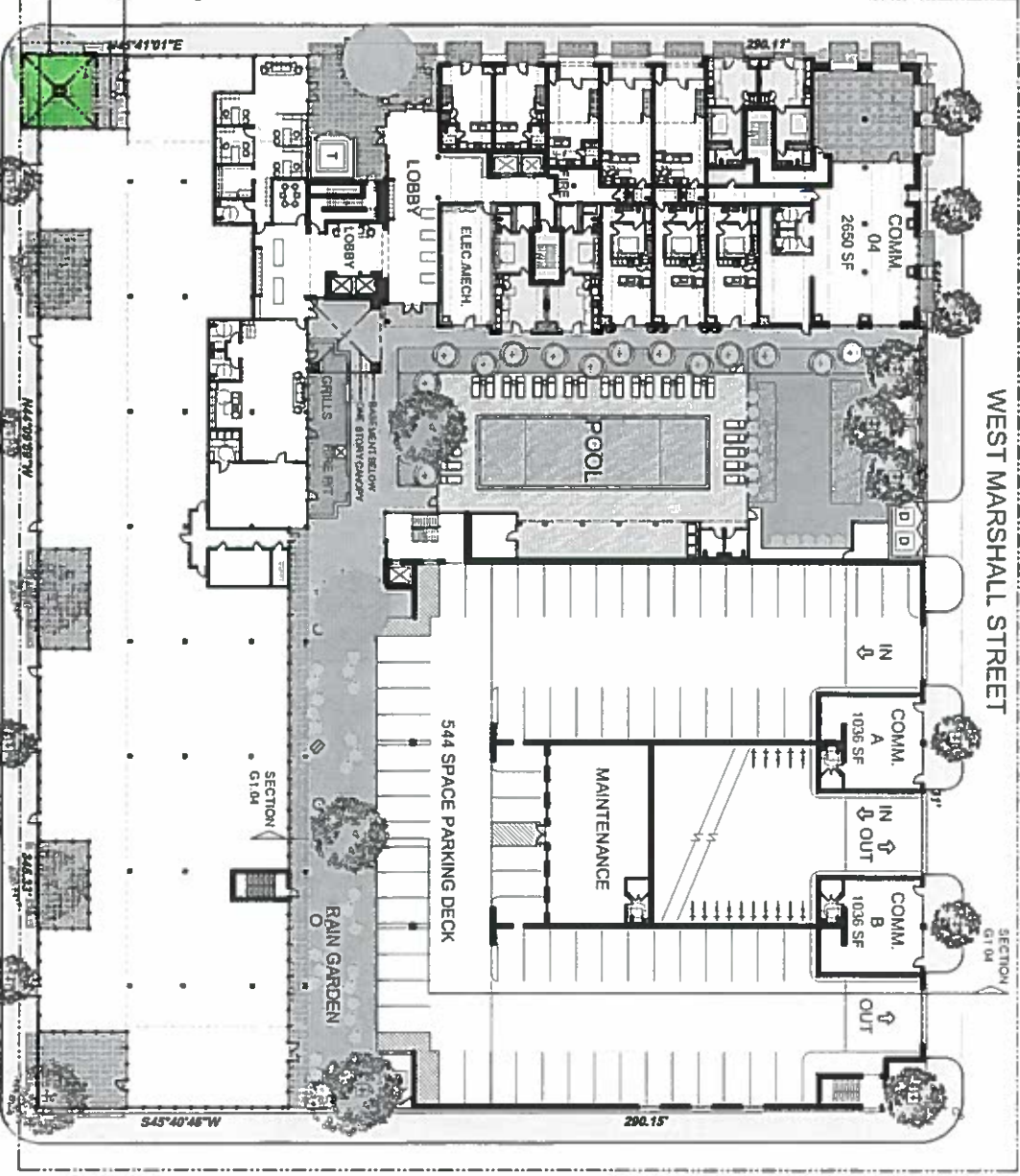
PARCEL B - 12 FLOORS
 11 FLOORS: APARTMENTS
 1ST FLOOR: COMM/APTS.
 191 APARTMENTS

MACTAVISH AVENUE

WEST MARSHALL STREET

WEST BROAD STREET

HIGHPOINT AVENUE



CONSTRUCTION
 SITE FENCING

CELL TOWER
 FENCING

CELL TOWER
 BASE (24'X24')

6 FLOORS
 5 FLOORS: APARTMENTS
 1ST FLOOR: COMMERCIAL
 110 APARTMENTS



© SWA ARCHITECTS, VA, INC. ALL RIGHTS RESERVED.
 THIS WORK IS COVERED BY COPYRIGHT. USE OF
 THIS WORK IN WHOLE OR IN PART IS FORBIDDEN
 WITHOUT THE EXPRESSED WRITTEN CONSENT
 OF SWA ARCHITECTS.

PROJECT NO: 3200 West Broad Street
 DATE: 07/08/19

PROJECT HGR: JWB
 3200 W BROAD STREET

West Broad Street
 Richmond, Virginia

CELL TOWER
 SITE PLAN

Schematic Design
 L1.02



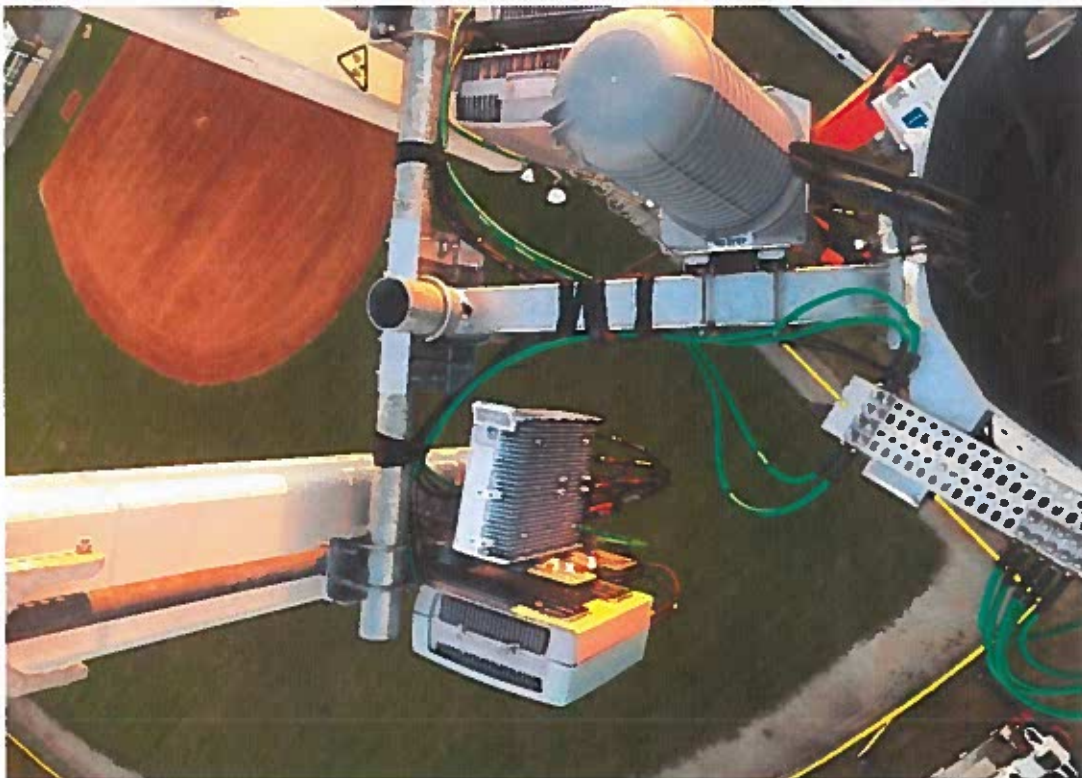
3200 – Cell Tower – 3 - Receivers



3200 – Cell Tower – 4 - Electronic Cables



3200 – Cell Tower – 5 - Concrete and Steel Counter Weights



3200 – Cell Tower – 6 – Receivers and Electronics