

STONY POINT VILLAGE

RETAIL SIGNAGE

CORNER OF STONY POINT ROAD & HUGUENOT ROAD

PARCEL ID: C0011105002

CORNER OF FOREST HILL AVE & HUGUENOT ROAD

PARCEL ID: C0011105008

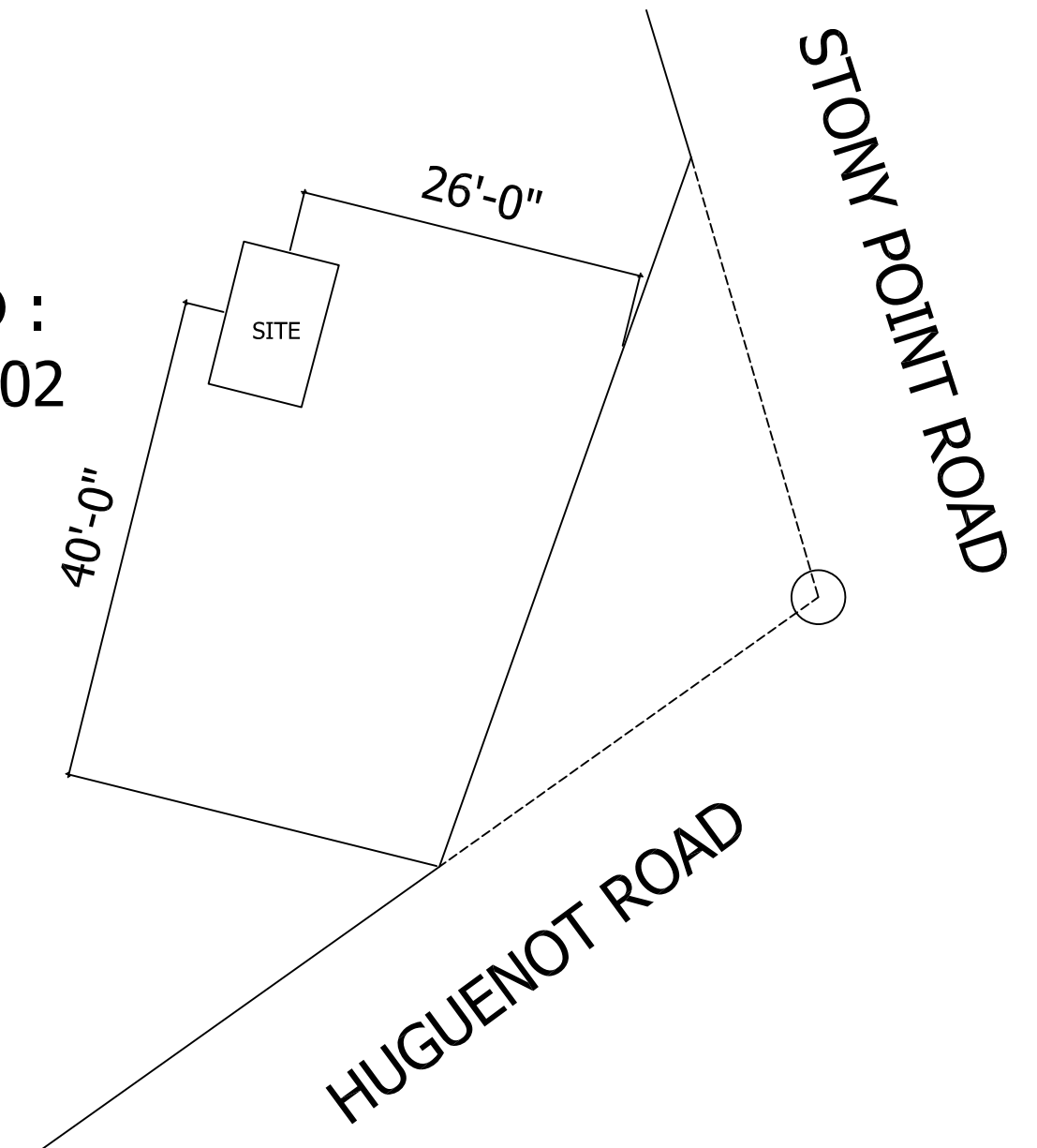
ARCHITECT

INTEC GROUP, INC.
214 W. TREMONT AVE.
SUITE 301
CHARLOTTE, NC 28203
(704) 372-7910

OWNER/AGENT

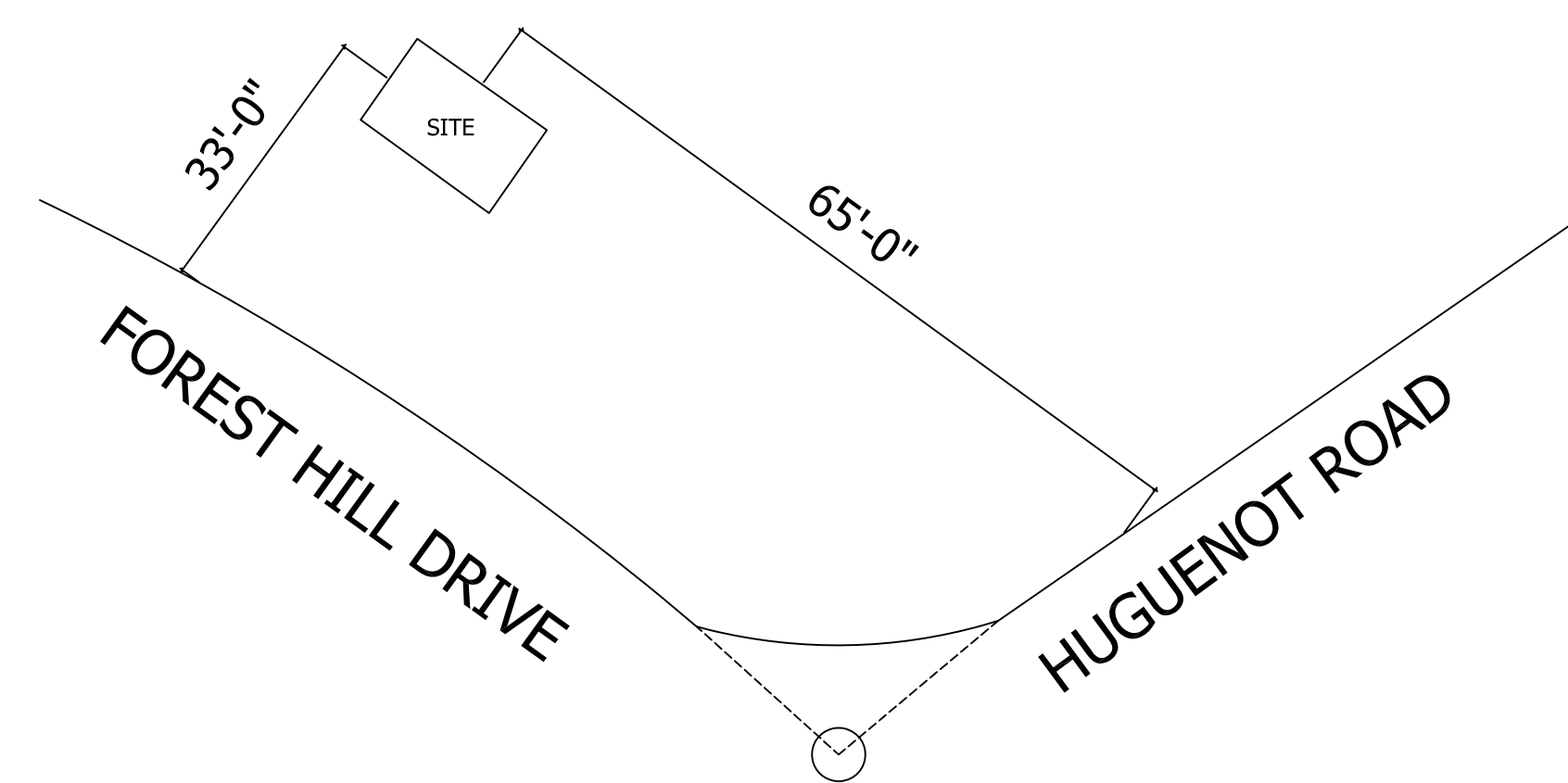
ZIFF PROPERTIES, INC.
200 WINGO WAY
SUITE 100
MT PLEASANT, SC 29464
843-724-3590

PARCEL ID :
C0011105002



6 MONUMENT SIGN PLAN - STONY POINT ROAD ENTRY
A101 SCALE: 1/16" = 1'-0"

PARCEL ID :
C0011105008



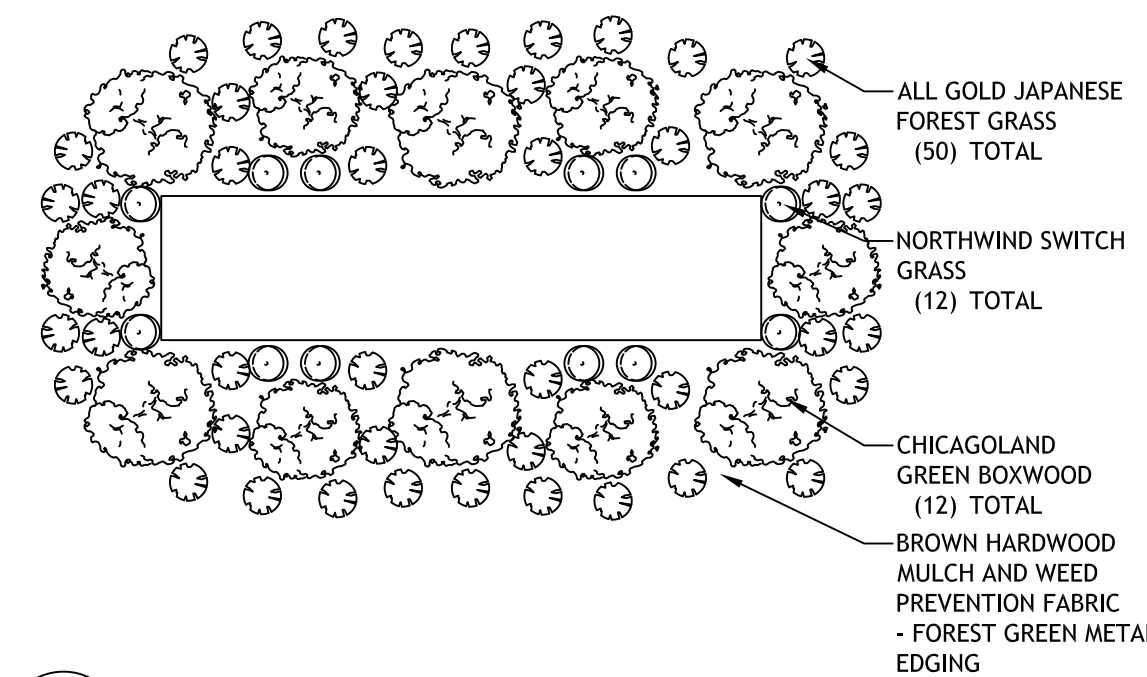
5 MONUMENT SIGN PLAN - FOREST HILL ROAD ENTRY
A101 SCALE: 1/16" = 1'-0"

PROJECT DESCRIPTION

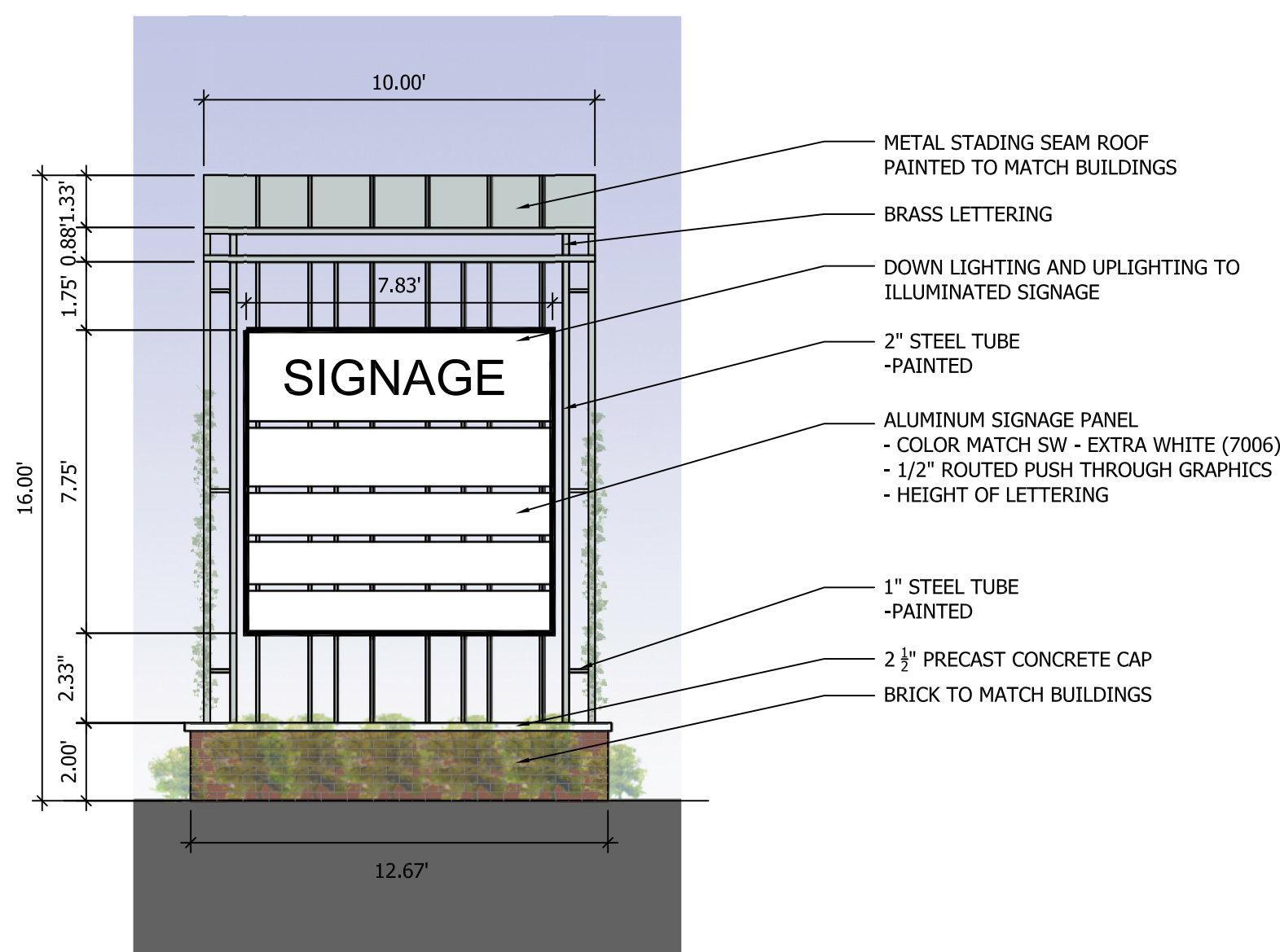
(2) NEW IDENTICAL MONUMENT SIGNS AT LOCATIONS INDICATED.

SIGN CALCULATIONS

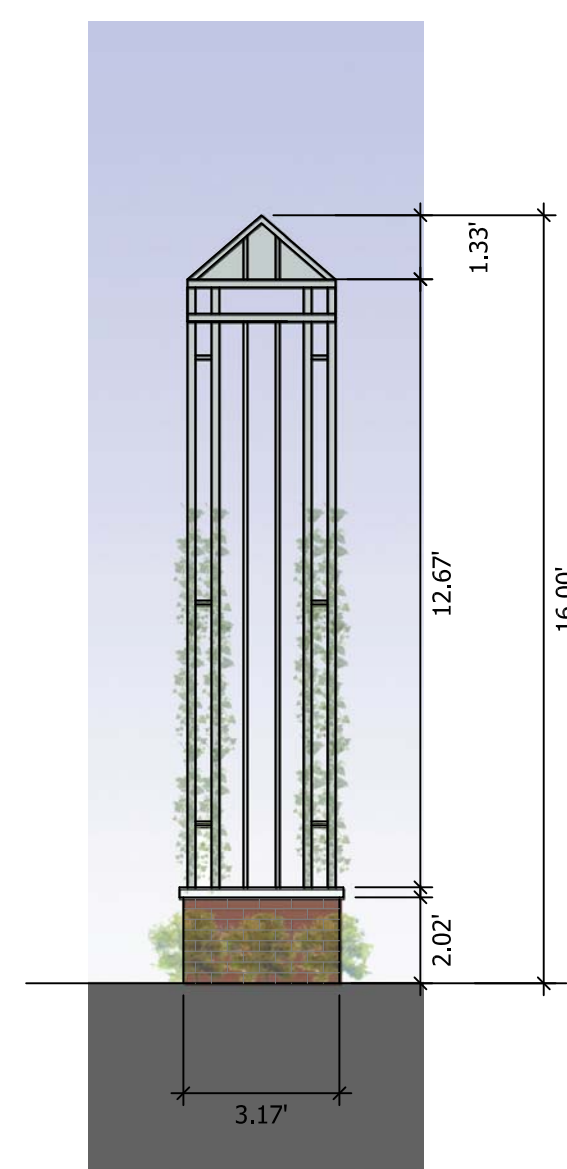
NEW	
FRONT AND BACK	
WIDTH:	7.83'
HEIGHT:	7.75'
SIDES	
WIDTH:	3.25'
OVERALL HEIGHT:	16.00'
OVERALL AREA	
SIDE:	25.2 SF
FRONT AND BACK:	60.6 SF



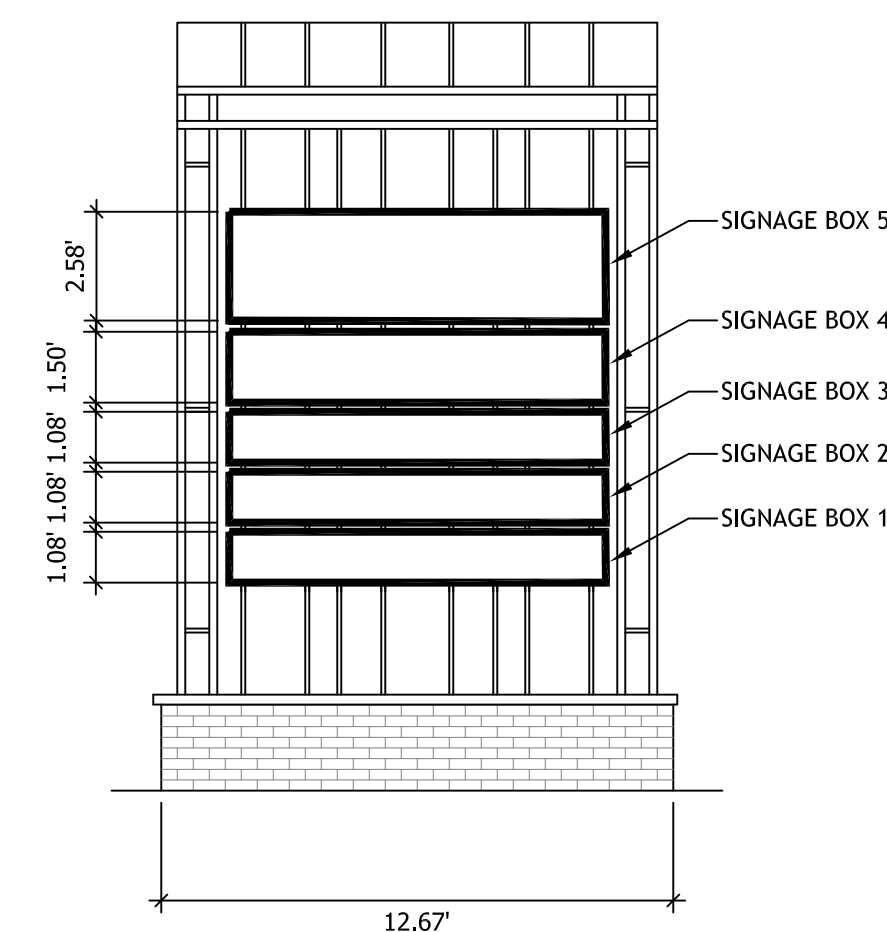
7 PLANTING PLAN
A101 SCALE: 1/4" = 1'-0"



3 SIGN ELEVATION - FRONT
A101 SCALE: 1/4" = 1'-0"

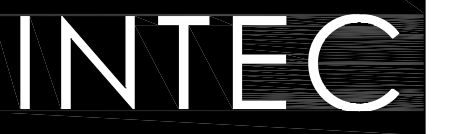
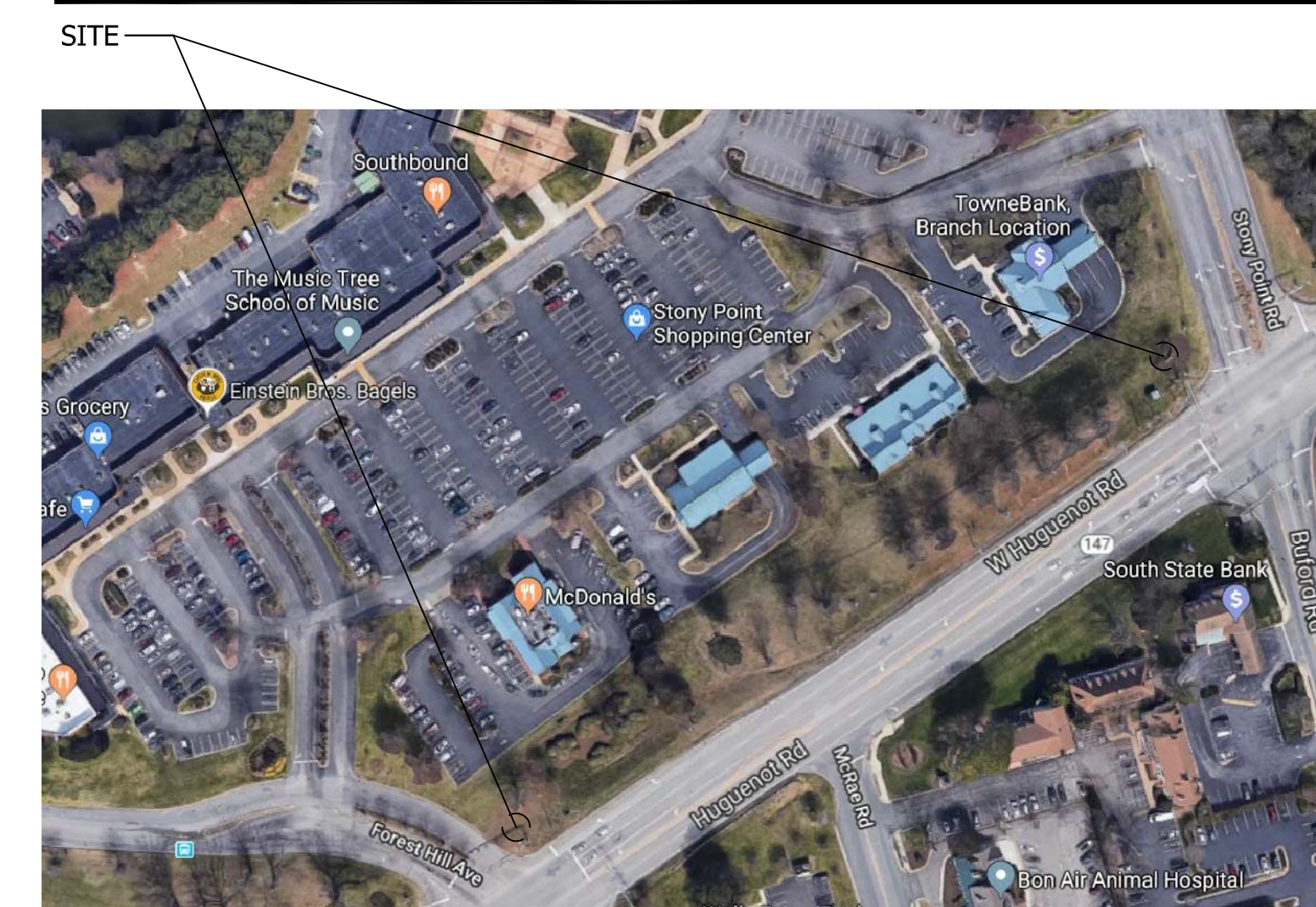


2 SIGN ELEVATION - SIDE
A101 SCALE: 1/4" = 1'-0"



1 SIGN ELEVATION - SIGNAGE BOX LOCATIONS
A101 SCALE: 1/4" = 1'-0"

LOCATION PLAN



INTEC Group, Inc.
3201 JERMANTOWN ROAD
SUITE 750
FAIRFAX, VA 22030
P: 703.359.9737
www.intecgroup.net

PROJECT

STONY POINT VILLAGE
SIGN
CORNER OF STONY POINT ROAD & HUGUENOT ROAD
CORNER OF FOREST HILL AVE. & HUGUENOT ROAD.
RICHMOND, VA

SEAL

DRAWING LOG

ISSUE: SIGNAGE PERMIT
DATE: 10.2.2019

SHEET INFORMATION

DATE OF DRAWING: 08.09.19
DRAWN BY:
JOB NUMBER: 1155-02

COVER SHEET &
SIGN ELEVATIONS

A101