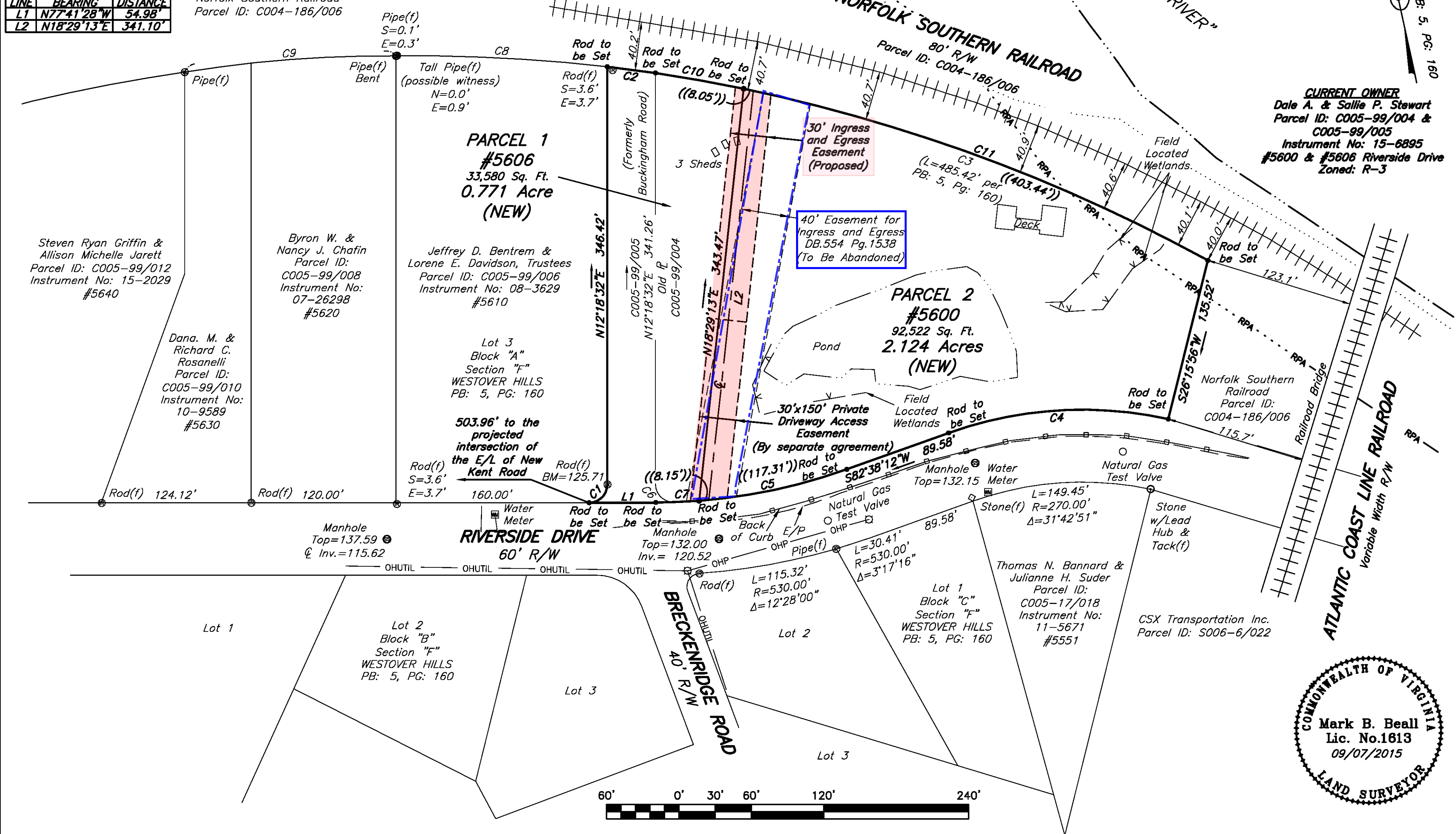


CURVE TABLE						
CURVE	RADIUS	ARC LENGTH	DELTA ANGLE	CHORD BEARING	CHORD LENGTH	TANGENT
C1	15.00'	23.56'	90°00'00"	N57°18'32"E	21.21'	15.00'
C2	1038.76'	40.31'	2°13'25"	N70°20'28"W	40.31'	20.16'
C3	1380.54'	485.75'	20°09'35"	N58°56'09"W	483.24'	245.41'
C4	330.00'	184.87'	32°05'49"	N81°18'54"W	182.46'	94.93'
C5	470.00'	125.46'	15°17'40"	N89°42'58"W	125.09'	63.11'
C6	14.76'	23.42'	90°54'21"	N34°04'00"W	21.04'	15.00'
C7	470.00'	20.91'	2°32'58"	N80°47'39"W	20.91'	10.46'
C8	1430.38'	175.34'	7°01'24"	N74°45'13"W	175.23'	87.78'
C9	1036.68'	175.73'	9°42'45"	N82°06'46"W	175.52'	88.08'
C10	1380.54'	74.26'	3°04'55"	S67°28'29"E	74.25'	37.14'
C11	1380.54'	411.49'	17°04'40"	S57°23'42"E	409.96'	207.28'

LINE TABLE		
LINE	BEARING	DISTANCE
L1	N77°41'28"W	54.98'
L2	N18°29'13"E	341.10'

Norfolk Southern Railroad
Parcel ID: C004-186/006

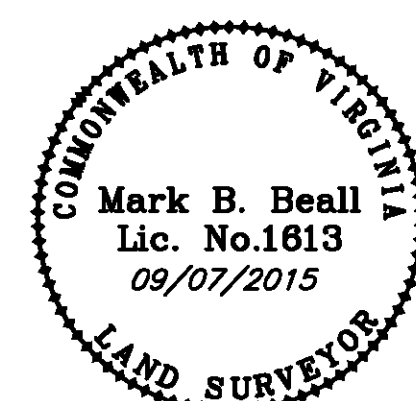
This is to certify that this plat or map was prepared under my direction from an actual field survey without the benefit of a title report. Unless otherwise noted, to the best of my knowledge and belief all visible evidence of improvements, easements and apparent encroachments are shown hereon. Not all easements may be shown. Easement ties are represented within double parenthesis. ((XX.XX')) These properties are in a FEMA defined flood zone "X" per Community Panel Number: 510129 0036 D, dated: April 2, 2009. Vertical Datum held to City of Richmond Utility asbuilts.



BALZER AND ASSOCIATES, INC.
REGISTERED PROFESSIONAL ENGINEERS AND SURVEYORS
www.balzer.cc
PLANNERS • ARCHITECTS
ENGINEERS • SURVEYORS
15871 City View Drive
Suite 200
Midlothian, Virginia 23113
Phone: 804/794-0571
FAX: 804/794-2635
1208 Corporate Circle
Roanoke, Virginia 24018
Phone: 540/772-9580
FAX: 540/772-9080
448 Peppers Ferry Road
Christiansburg, Virginia 24073
Phone: 540/381-4280
FAX: 540/381-4291
1681 Commerce Road
Verona, Virginia 24482
Phone: 540/248-3220
FAX: 540/248-3221
128 W Market St, Suite 103
Hamdenburg, VA 22801
Phone: 540/433-1908

PLAT SHOWING A PARCEL LINE MODIFICATION ON TWO PARCELS OF LAND ALONG THE NORTH LINE OF RIVERSIDE DRIVE CITY OF RICHMOND, VIRGINIA

DRAWN BY: BCH
DESIGNED BY:
CHECKED BY: MBB
DATE: 09/07/2015
REVISIONS:
SCALE: 1"=60'
SHEET NO.
1 OF 1
JOB NO.
55150009.00
DEPT. 55



J:\156065150009.00 RIVERSIDE DRIVE 6600- STEWART\Survey\Drawings\Parcel Line Modification.dwg