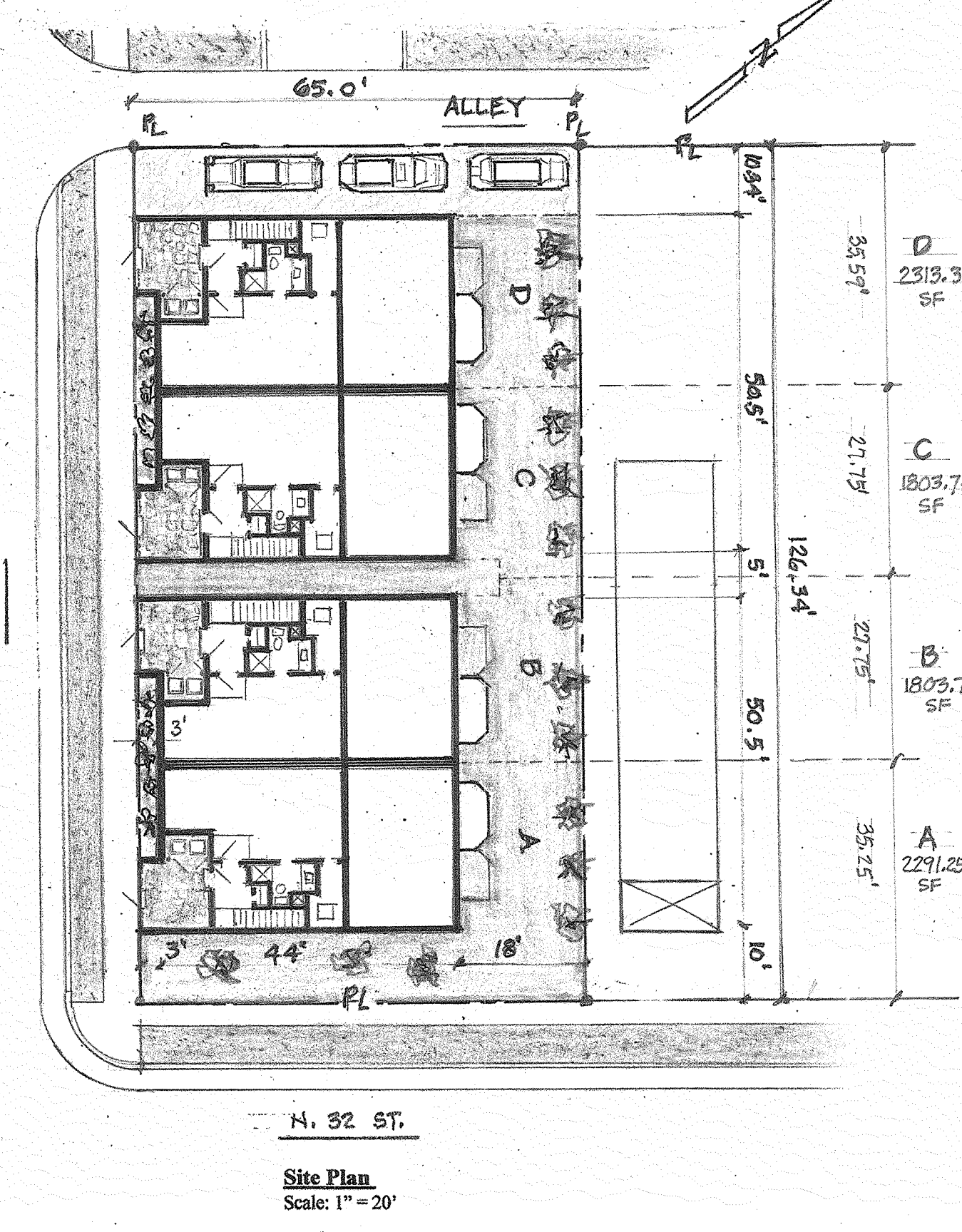
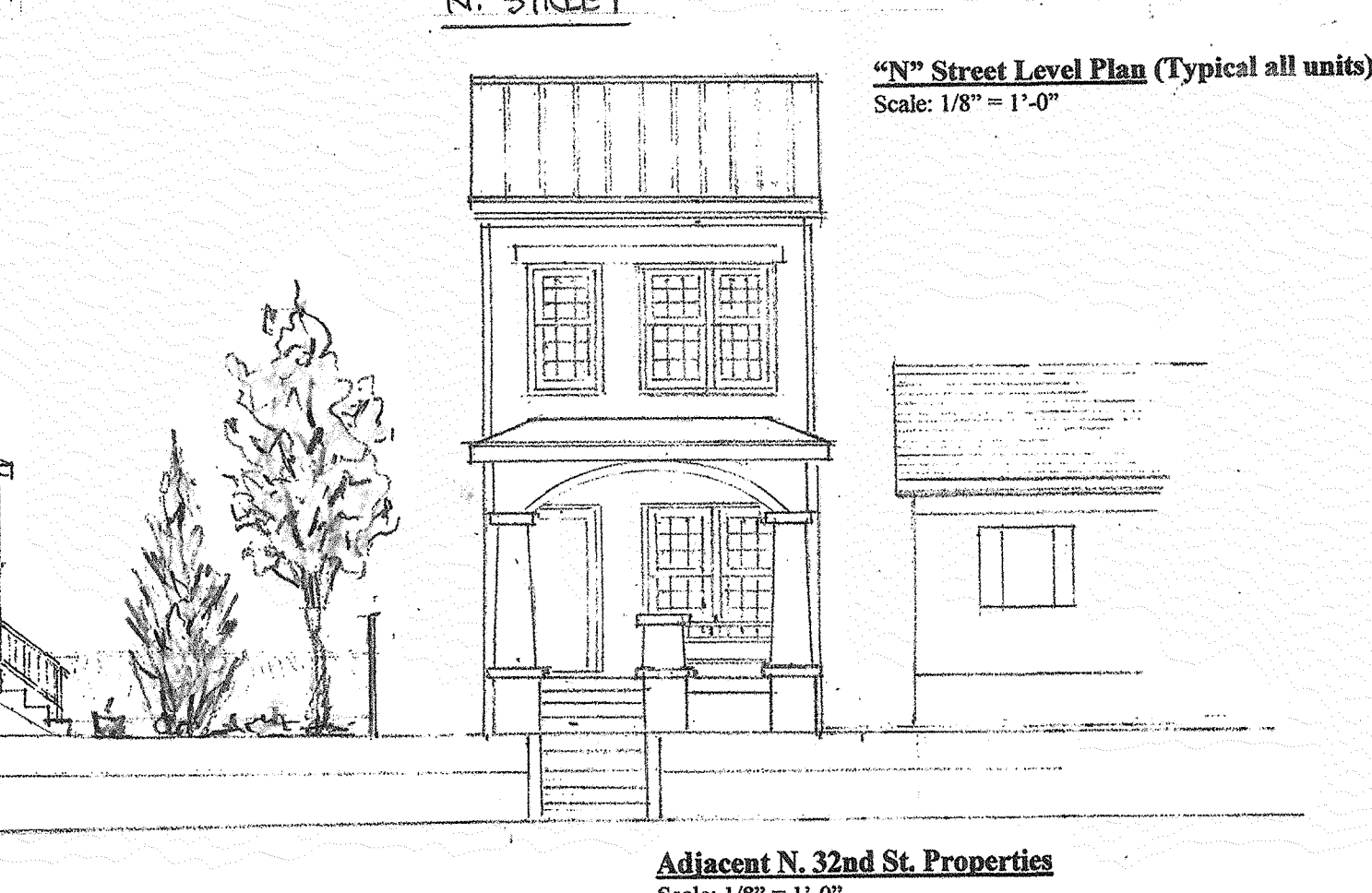
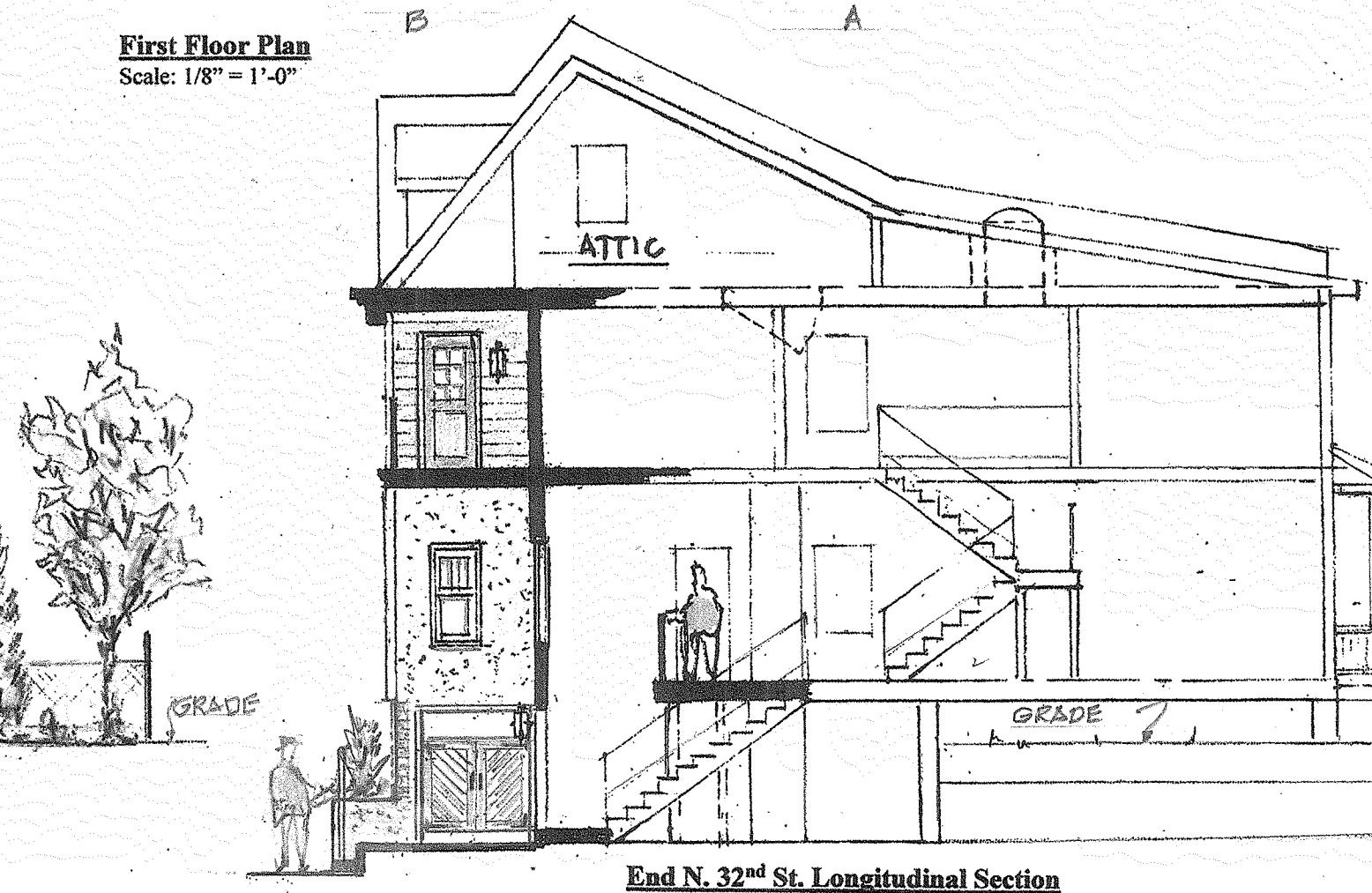
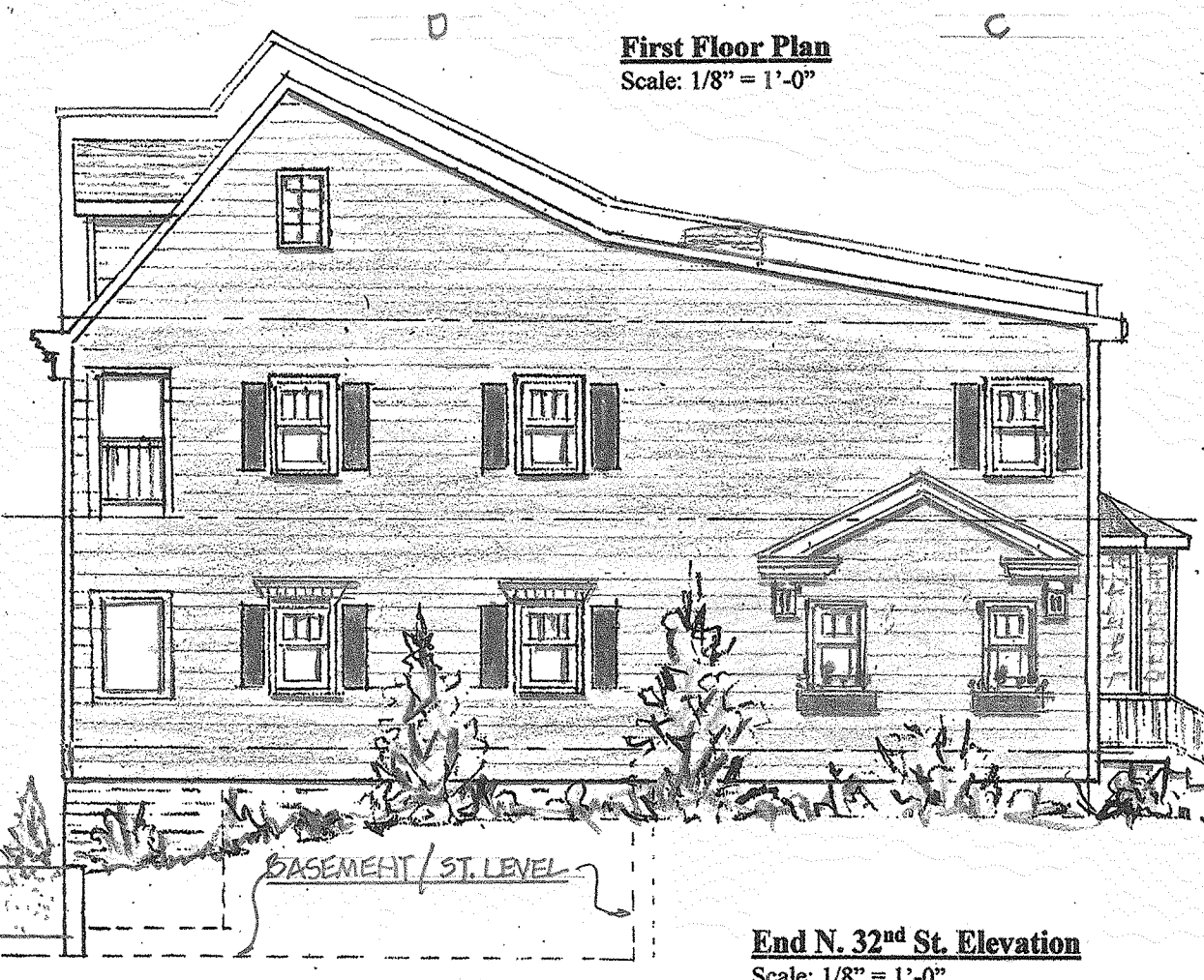
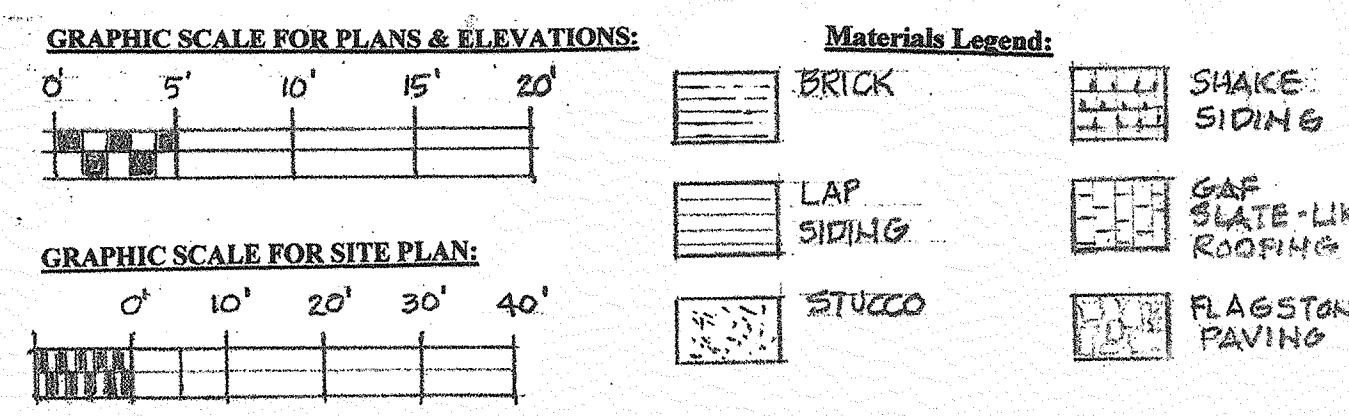
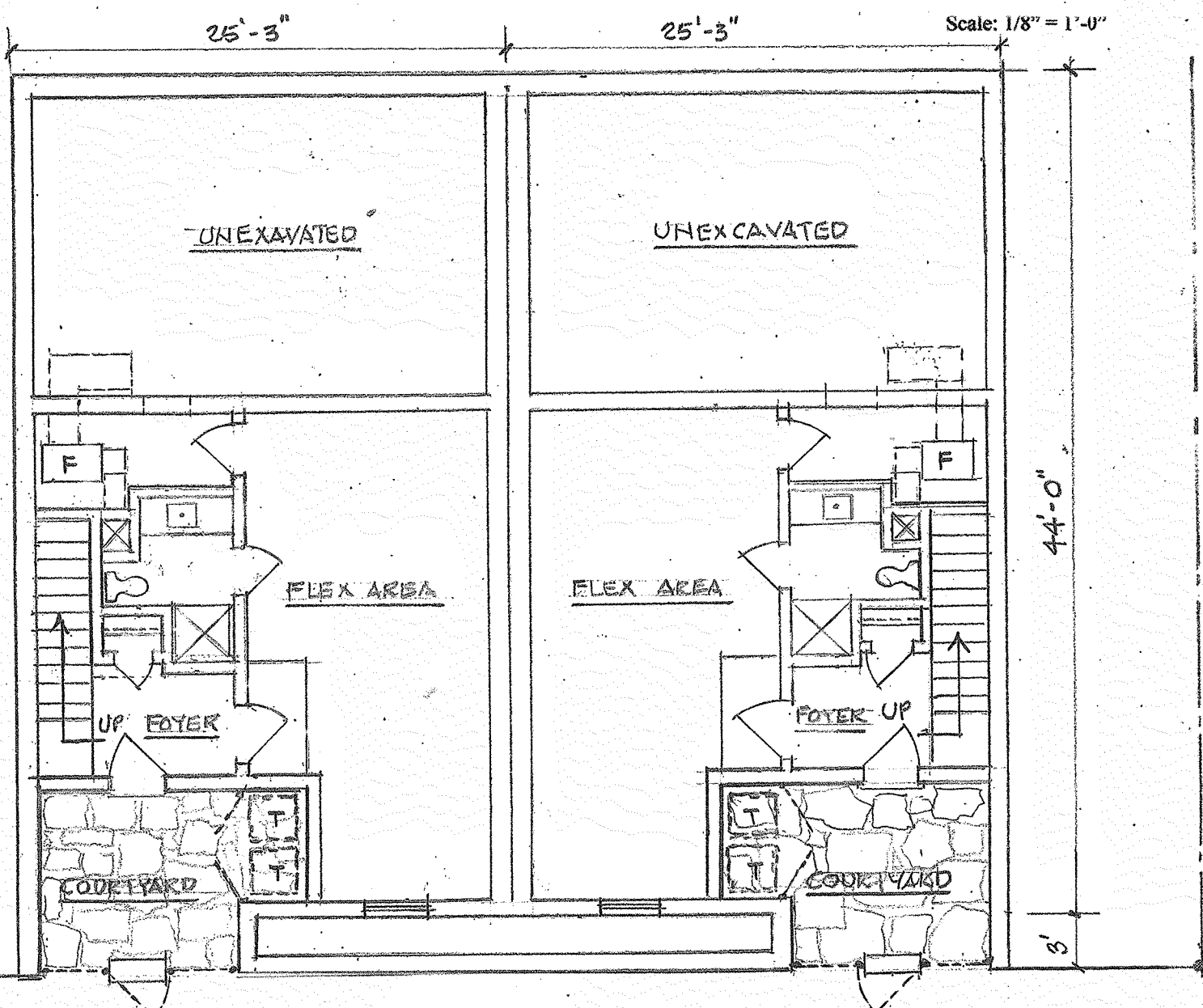
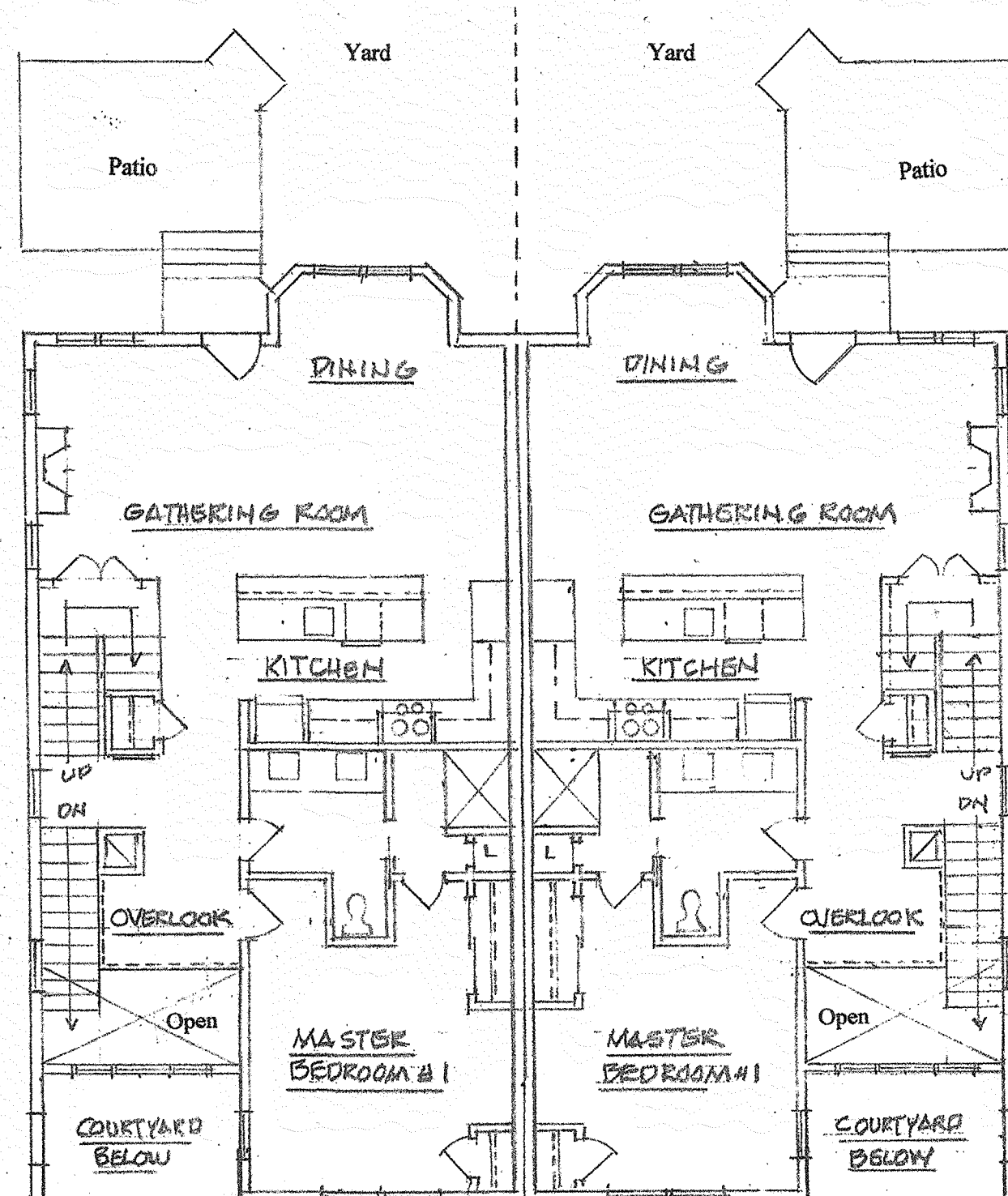
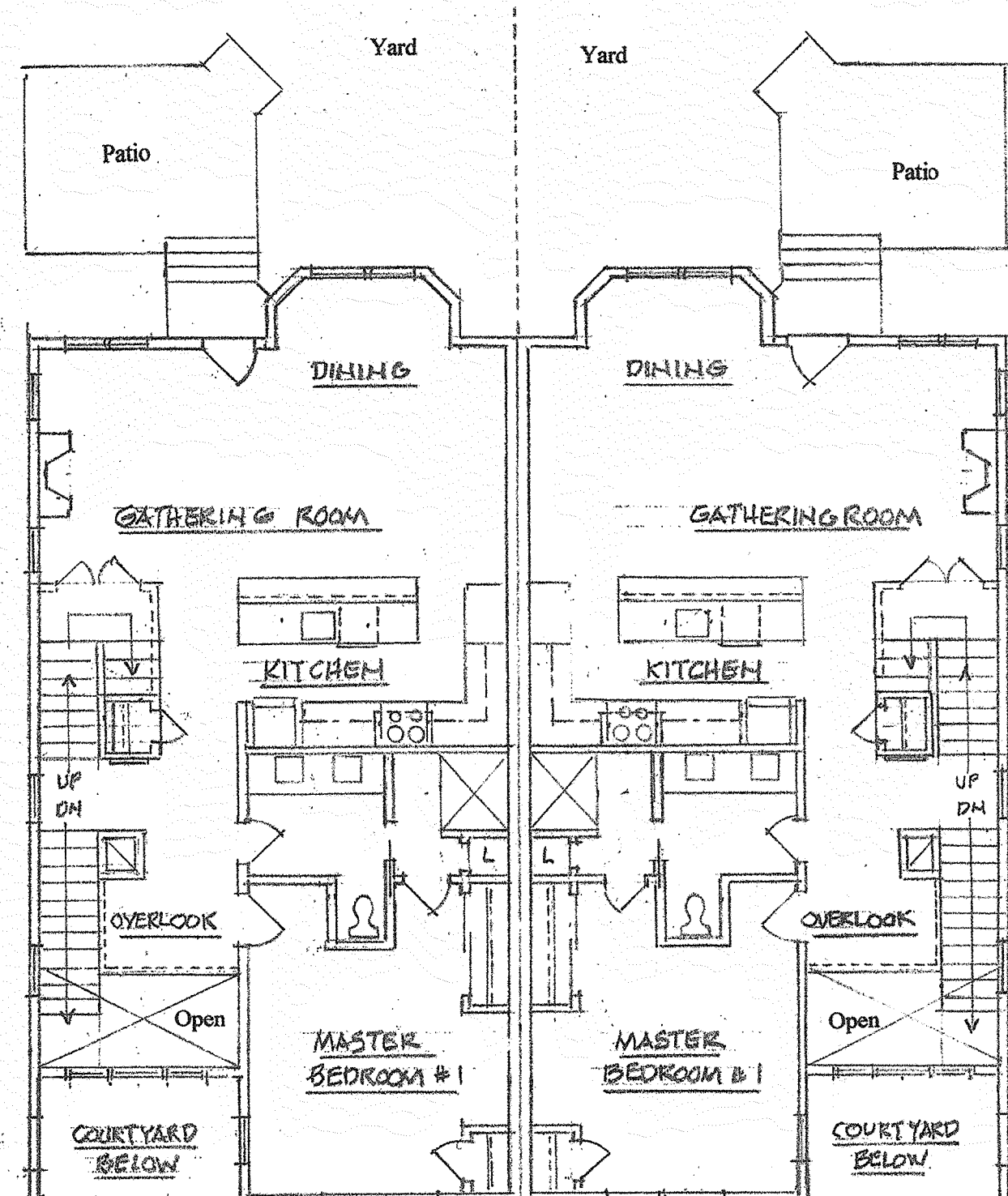
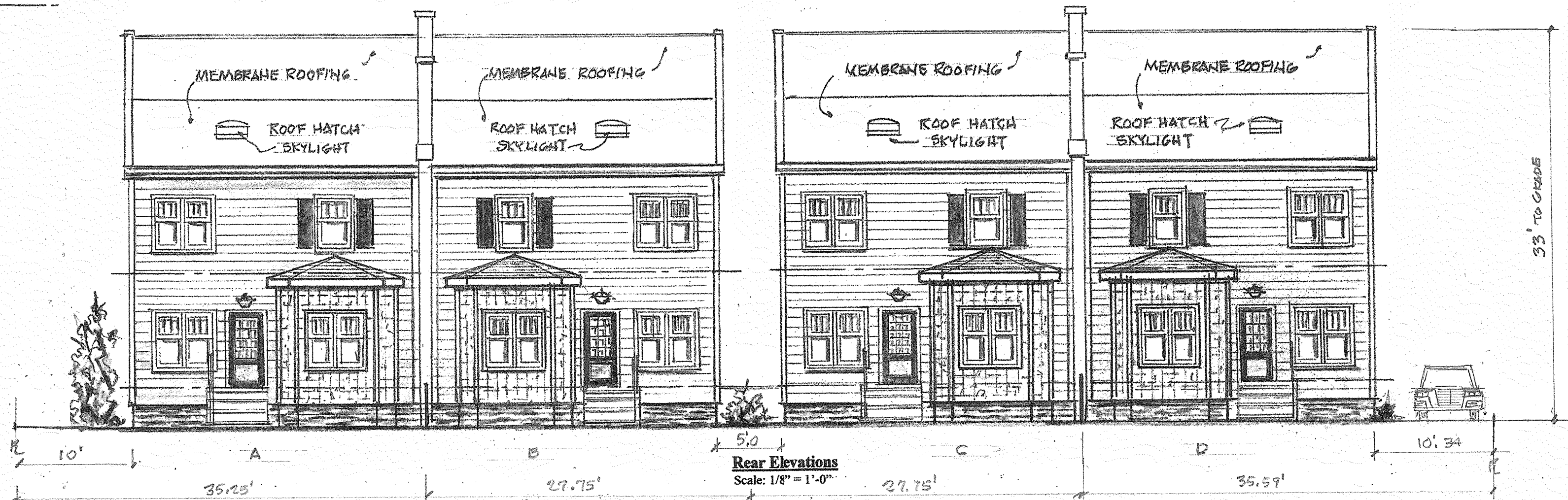
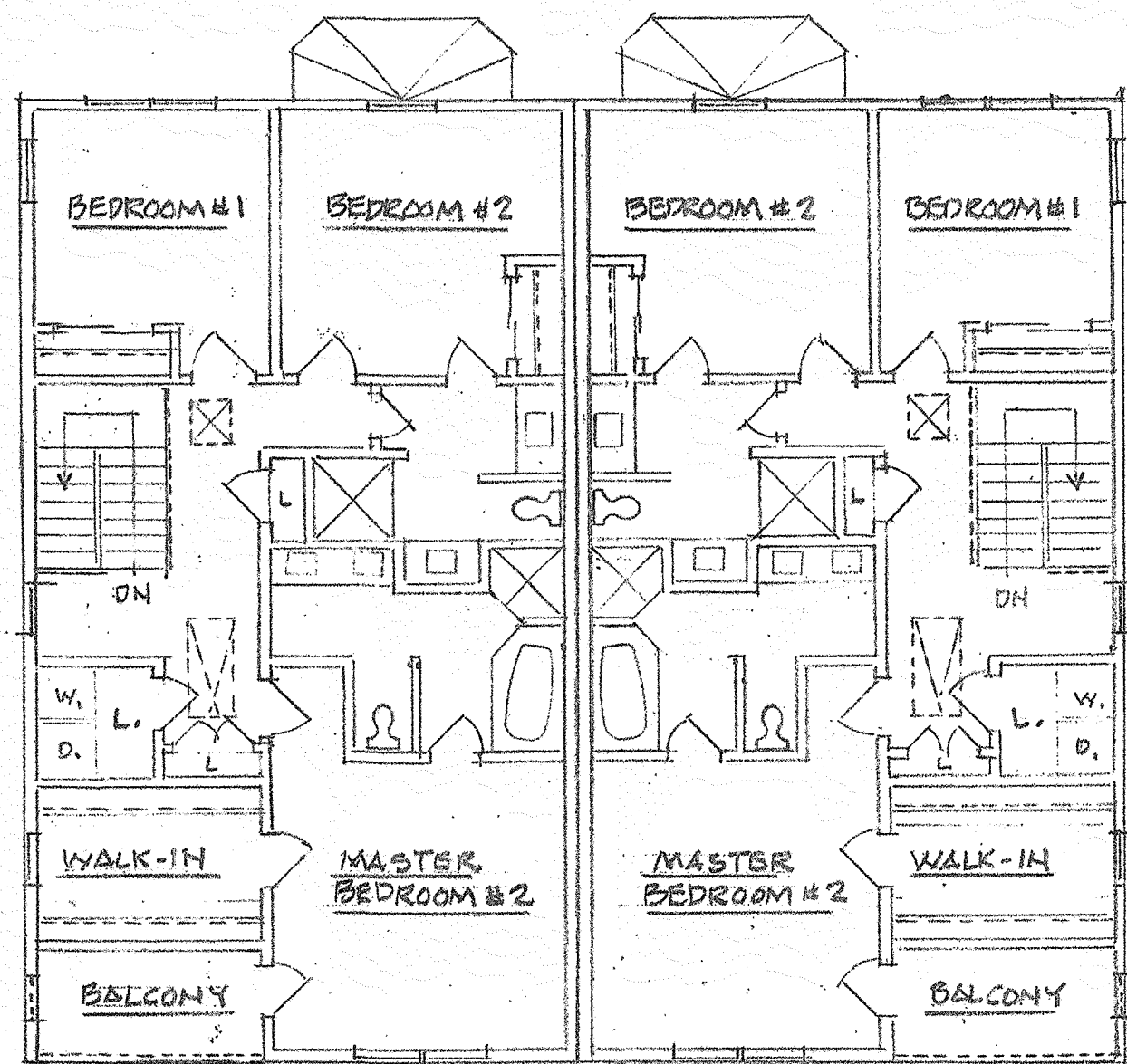
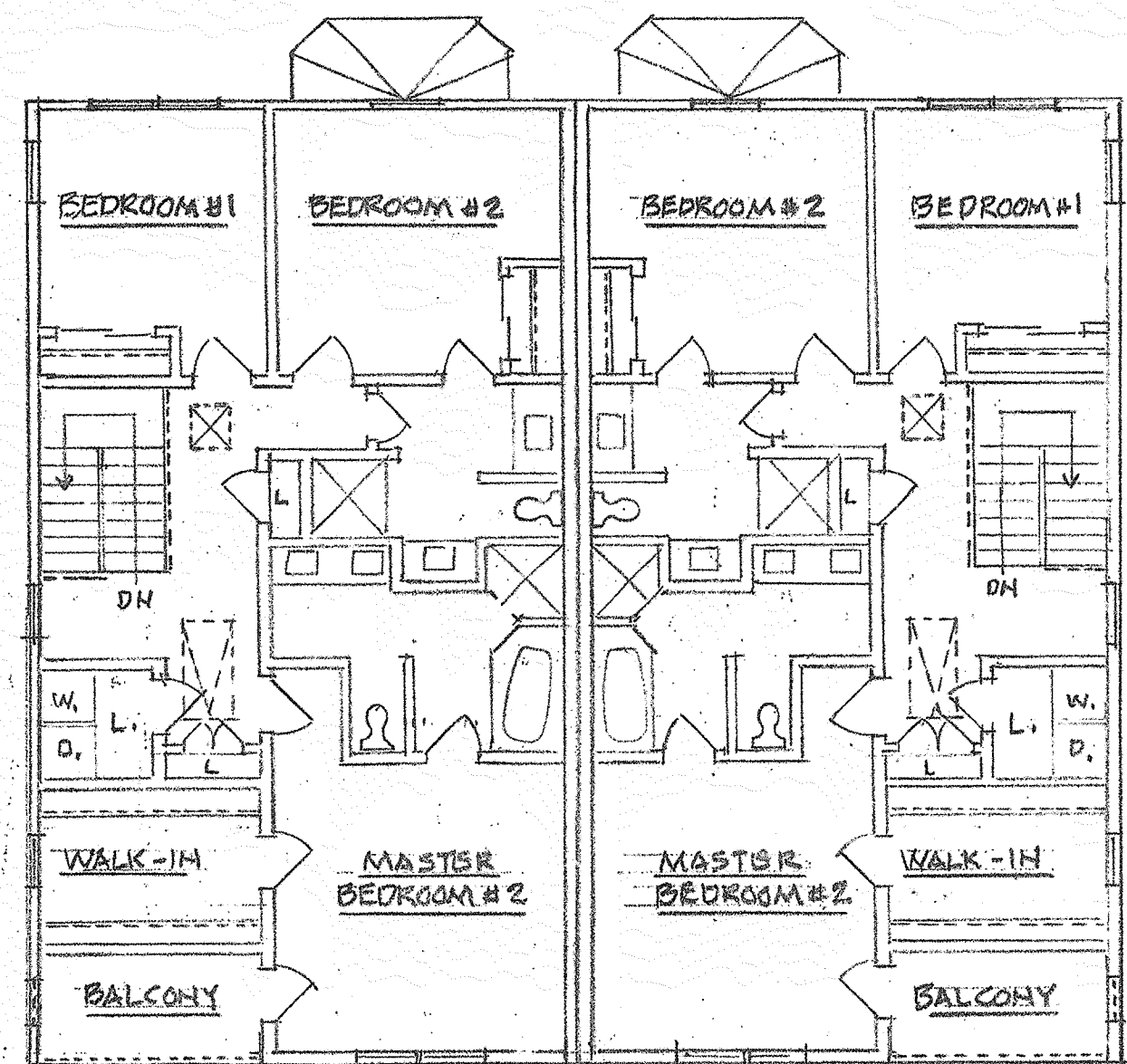


REVISIONS	BY
0 PAGES FOR	
5/24/2018 15:15	
DATED 5/24/2018	



Special Use Permit Plans
Residential Redevelopment
Northwest Corner "N" St. & N. 32nd St.
WWS VIII, LLC

WILLIAM A. VOORHEES DESIGNS INC
2 South 2nd Street
Richmond, Virginia 23219
Tel: 804-343-1975
wvoorheesdesigns@verizon.net

Date MAY 23, 2018
Scale AS SHOWN
Drawn
Job 5620
Sheet 1
Of 1 Sheets