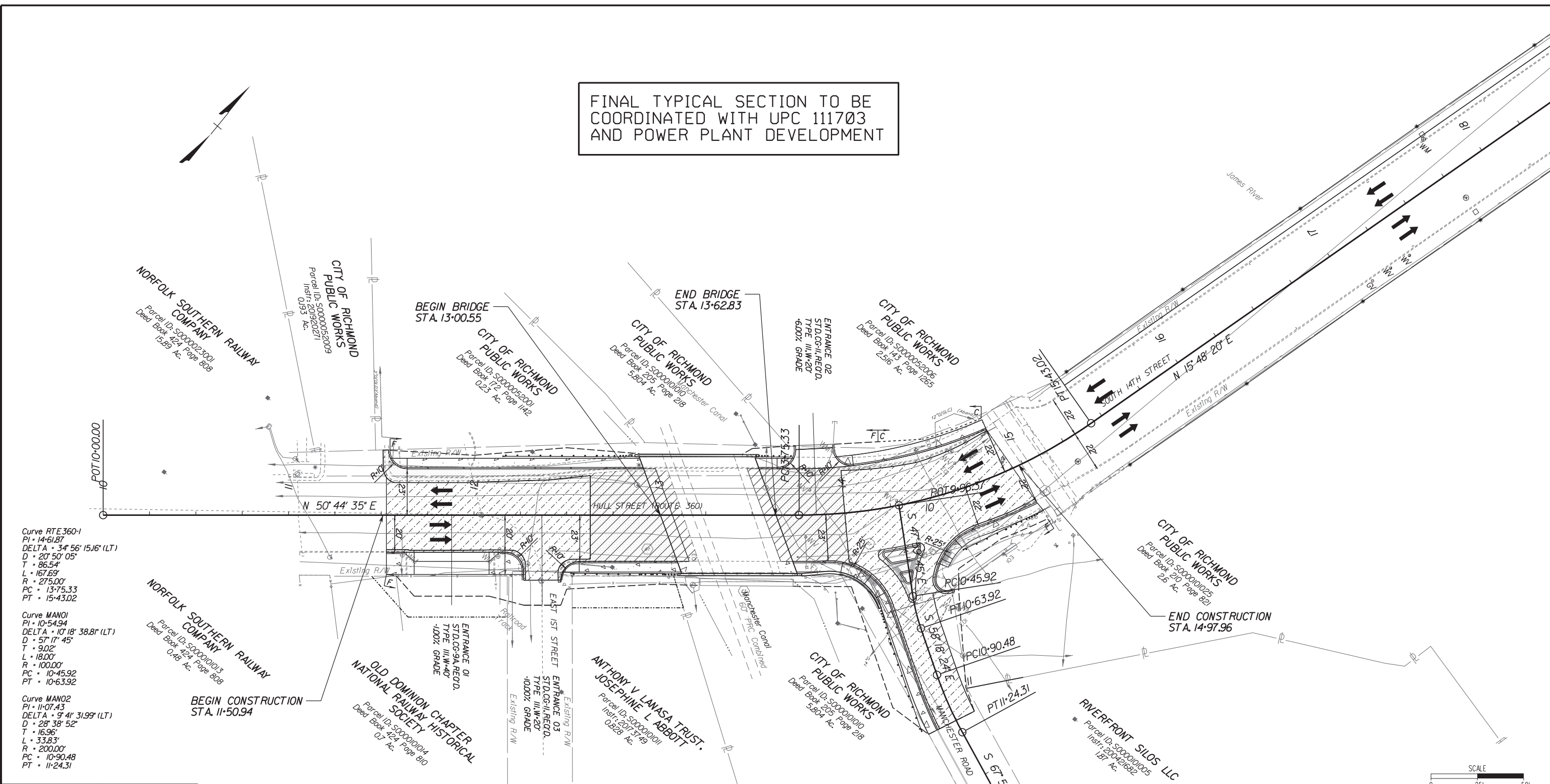


FINAL TYPICAL SECTION TO BE COORDINATED WITH UPC 111703 AND POWER PLANT DEVELOPMENT

SURVEYED BY: CITY OF RICHMOND  
SUPERVISED BY: MSV  
DESIGNED BY: GSK



Curve RTE 360-1  
PI • 14+61.87  
DELTA • 34° 56' 15.16" (LT)  
D • 20' 50' 05"  
T • 86.54'  
L • 167.69'  
R • 275.00'  
PC • 13+75.33  
PT • 15+43.02

Curve MANO1  
PI • 10+54.94  
DELTA • 10° 18' 38.81" (LT)  
D • 57' 17' 45"  
T • 9.02'  
L • 18.00'  
R • 100.00'  
PC • 10+45.92  
PT • 10+63.92

Curve MANO2  
PI • 11+07.43  
DELTA • 9° 41' 31.99" (LT)  
D • 28' 38' 52"  
T • 16.96'  
L • 33.83'  
R • 200.00'  
PC • 10+90.48  
PT • 11+24.31

**LEGEND**

	DENOTES ROADWAY PAVEMENT
	DENOTES MILL/OVERLAY
	DENOTES PAVEMENT DEMOLITION
	DENOTES CONCRETE SIDEWALK
	DENOTES CONSTRUCTION LIMITS IN CUTS
	DENOTES CONSTRUCTION LIMITS IN FILLS

- |   |                                  |   |                                 |
|---|----------------------------------|---|---------------------------------|
| 1 | 8" RICHMOND ST'D CURB REQ'D      | 7 | VDOT ST'D. CG-12, TYPE A REQ'D. |
| 2 | VDOT ST'D GR-MGS2 REQ'D          | 8 | TEMPORARY CONSTRUCTION ESMT     |
| 3 | VDOT ST'D GR-MGSIA, RADIAL REQ'D |   |                                 |
| 4 | VDOT ST'D GR-FOA-5 REQ'D         |   |                                 |
| 5 | SPECIAL DESIGN GUARDRAIL REQ'D   |   |                                 |
| 6 | SAWCUT REQ'D                     |   |                                 |

**30% PLANS**

THESE PLANS ARE UNFINISHED AND UNAPPROVED AND ARE NOT TO BE USED FOR ANY TYPE OF CONSTRUCTION OR THE ACQUISITION OF RIGHT OF WAY.

**REFERENCES**

SHEET	DESCRIPTION
	ALIGN. & SUR. DATA
	DRAIN. DESCRIPTIONS
	DRAINAGE PROFILES
3A	ROADWAY PROFILE
	SIGNING/MARKING

Whitman, Requardt & Associates  
Richmond, Virginia  
ROADWAY ENGINEER

Whitman, Requardt & Associates  
Richmond, Virginia  
HYDRAULIC ENGINEER

**NOTES**

- Lot dimensions in parentheses are from deed.
- Properly owners correct as of . 20
- Ordinance Number
- Adopted
- Accepted

**REFERENCES**

BL1 XX NAK, NE, SW, SE

**LEGEND**

Existing Curb & Gutter	Existing Sidewalk	Existing Curb Cut Ramp	Proposed Conc. Sidewalk
• Curb & Gutter	• Sidewalk	• Alley Crossing/Driveway	• Brick Sidewalk
• Basin	• Storm Sewer	• Fire Hydrant	• Castings/Water Valve
• Sewer Manhole	• Sanitary Sewer Manhole	• Edge of Pavement	• Water Meter
• Sanitary Sewer Manhole	• Gas Line	• Fence	• Gas Trip
• Gas Line	• Electric Line	• Cornerstone	• Telephone Manhole
• Electric Line	• Telephone/Telegraph	• Property Pin	• Electric Manhole
• Telephone/Telegraph	• TV Cable	• Utility Pole	• Proposed Curb Cut Ramp
• TV Cable	• Water Line	• Proposed Sewer	• Decorative Light
• Tree / Exist. Tree To Be Removed / Stump	• Property Line	• Manhole	• Conduit
		• Basin	• Conduit (Conc. Encased)
		• Curb & Gutter	• Retaining Wall
		• Asphalt	



Technical	Administrative
Surveys Superintendent	
Project Engineer	Capital Project Administrator
Maintenance Engineer	Deputy Director for Transportation / Public Works
City Traffic Engineer	Director of Public Works

DEPARTMENT OF PUBLIC WORKS  
RICHMOND, VIRGINIA

RTE. 360 OVER MANCHESTER CANAL

**PLAN**

CIP:XXX-XXX-XXXX

DESIGN BY: GSK	REVIEWED BY:	FIELD NOTES	SCALE	DATE	SHEET	DRAWING NO.
DRAWN BY: AD			1"-25"	MAY 2021	3	X-XXXXX
CHECKED BY: MSV						